



DANGER

Danger of electrical shock, burns or death. Always remove all power sources before attempting any repair, service or diagnostic work. Power can be present from shore power, generator, inverter or battery. All power sources must be disabled and secured before performing any service.

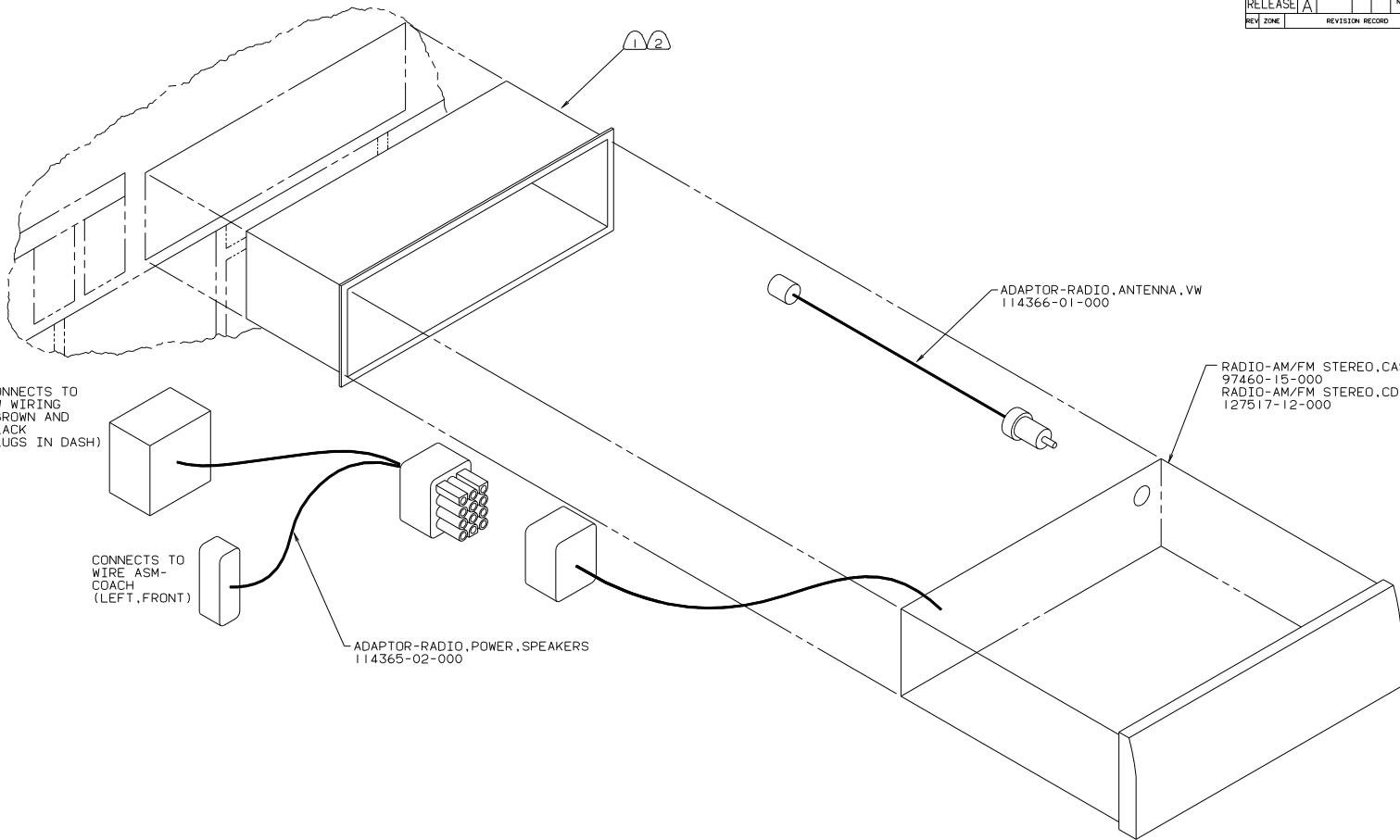


CAUTION

If you lack the skills, tools or equipment to perform diagnostic or repair work leave such work to an authorized Winnebago Industries dealer or other qualified shop.

DWG NO	SHT
137566-01	1
137566-02	2
137566-03	3
137566-04	4
137566-05	5
137566-06	6
137566-07	7

RELEASE REV A DATE DFTM ADM DWG NO 137566
 REV ZONE REVISION RECORD DATE DFTM-ORIG



(24N) RADIO-AM/FM/CASSETTE
 (19V) RADIO-AM/FM STEREO CD PLAYER

H-BODY & B-VAN

2 BEND TABS ON ALL 4 SIDES TO SECURE MOUNTING BRACKET TO DASH OPENING.
 1 SUPPLIED WITH RADIO.

LAYOUT NO		TITLE: RADIO INSTL	
DFTM	DATE	UNSPECIFIED TOLERANCES ARE:	MATERIAL:
CHR	DATE	WHOLE DIM (XX)	+
P E	DATE	ONE-PLACE (X.XX)	+
M E	DATE	TWO-PLACE (X.XX)	+
DGNR	DATE	ANGLE	+
	DATE	TWO ANGLE PROJECTION	+
DIA #		SCALE: NONE	DO NOT SCALE DRAWING
ALL DIMENSIONS ARE IN MILLIMETERS		SHEET 1 OF 7	SIZE DWG NO 137566