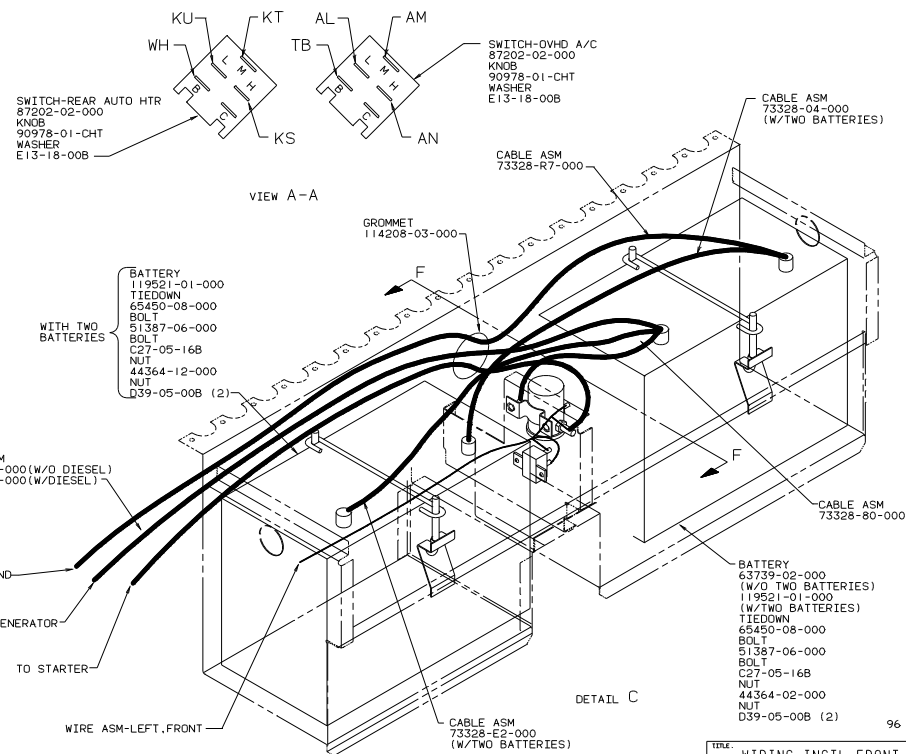
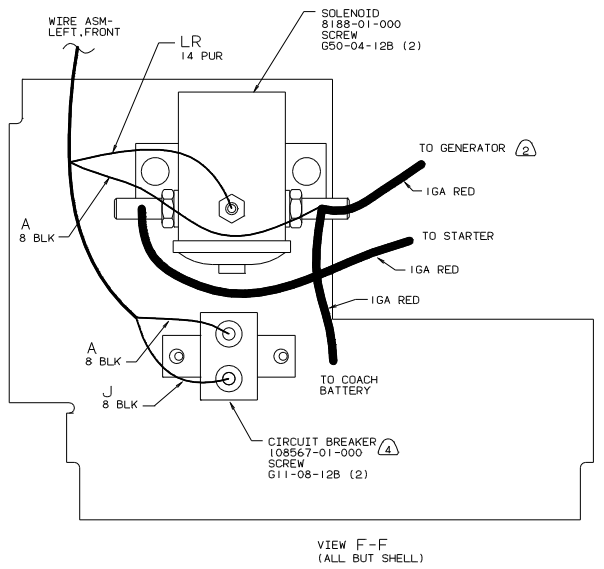
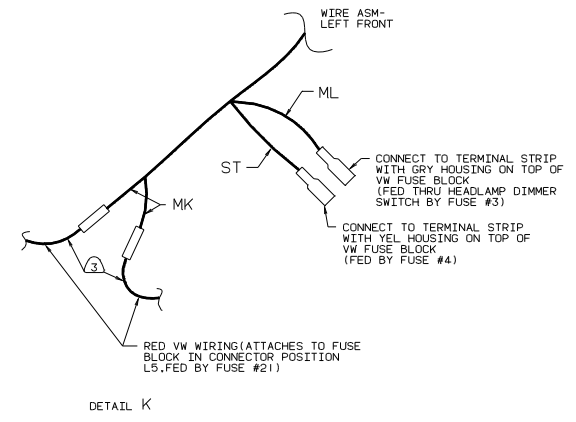
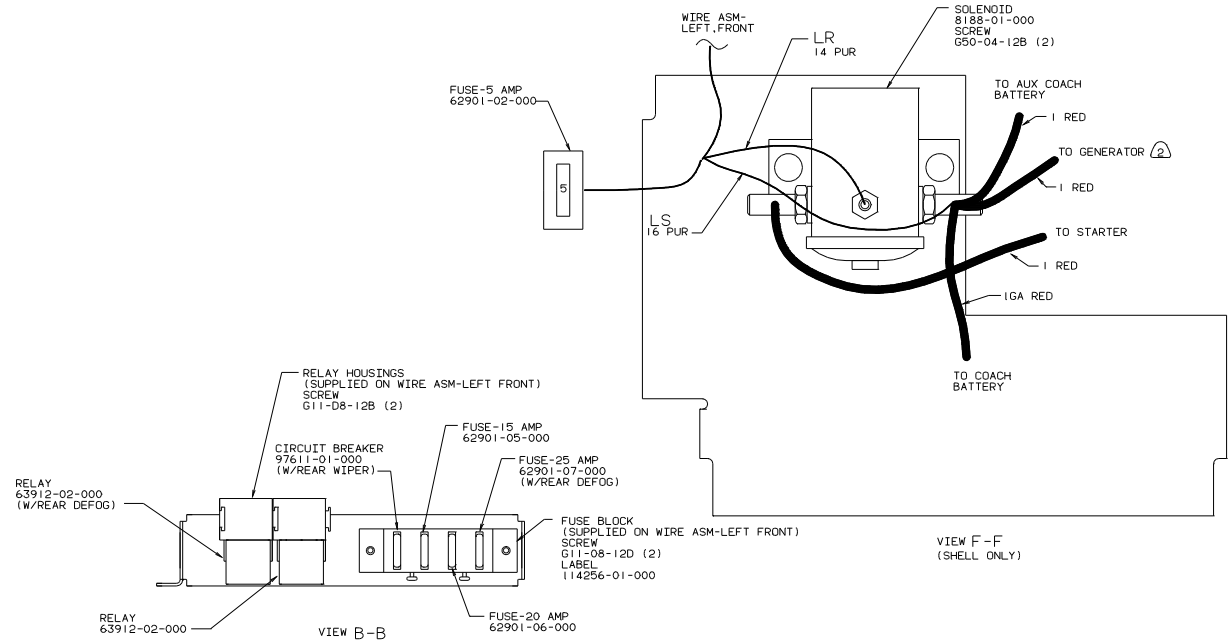


- ⑧ WITH W.I.E. EXPORT PREP PACKAGE.
- ⑦ WITH JAPAN EXPORT PACKAGE.
- ⑥ ROUTE BELOW FLOOR ALONG SAME PATH AS GENERATOR CABLE.
- ⑤ USE PLUG 61420-07-000 TO SEAL HOLE IN VW BULKHEAD.
- ④ MOUNT TO RIGHT SIDE OF STEERING COLUMN SUPPORT.
- ③ ALL WIRES TO BE ROUTED OVER SEAT PEDESTAL.
- ② TO BE USED WITH EXPORT UNITS. CRUISE CONTROL SPEED SENSOR MUST BE TRANSFERRED FROM OLD SPEEDOMETER.
- ① SEE WIRING INSTL-BODY FOR ADDITIONAL INFORMATION.

WINNEBAGO 96 H-SERIES	
OPTD	UNSPECIFIED TOLERANCES ARE MATERIAL
CHRP	WELD DIM 101
FR	ONE-PLACE (14 31)
FR	TWO-PLACE (14 30)
FR	ANGLE
FR	TRUSS W/ANGLE PROTECTION
COMP	
LANDING	TITLE: WIRING INSTL-FRONT END
DIA OF SCALE	DO NOT SCALE DRAWING
ALL DIMENSIONS ARE IN MILLIMETERS	SHEET 1 OF 2
	119908



- ④ SEAL SEAMS AND TOP OF CIRCUIT BREAKER WITH SEALANT 117082-01-000. MINIMIZE CONTACT OF SEALANT WITH ELECTRICALLY CONDUCTIVE SURFACES.
- ③ CUT WIRE AND RECONNECT AS SHOWN.
- ② SEE GENERATOR INSTL FOR ADDITIONAL INFORMATON.
- ① SEE WIRING INSTL-BODY FOR ADDITIONAL INFORMATON.

TITLE		WIRING INSTL-FRONT END	
30 NET SCALE DRAWING	SIZE	16	119908
SHEET 2 OF 2	FILE NO		