



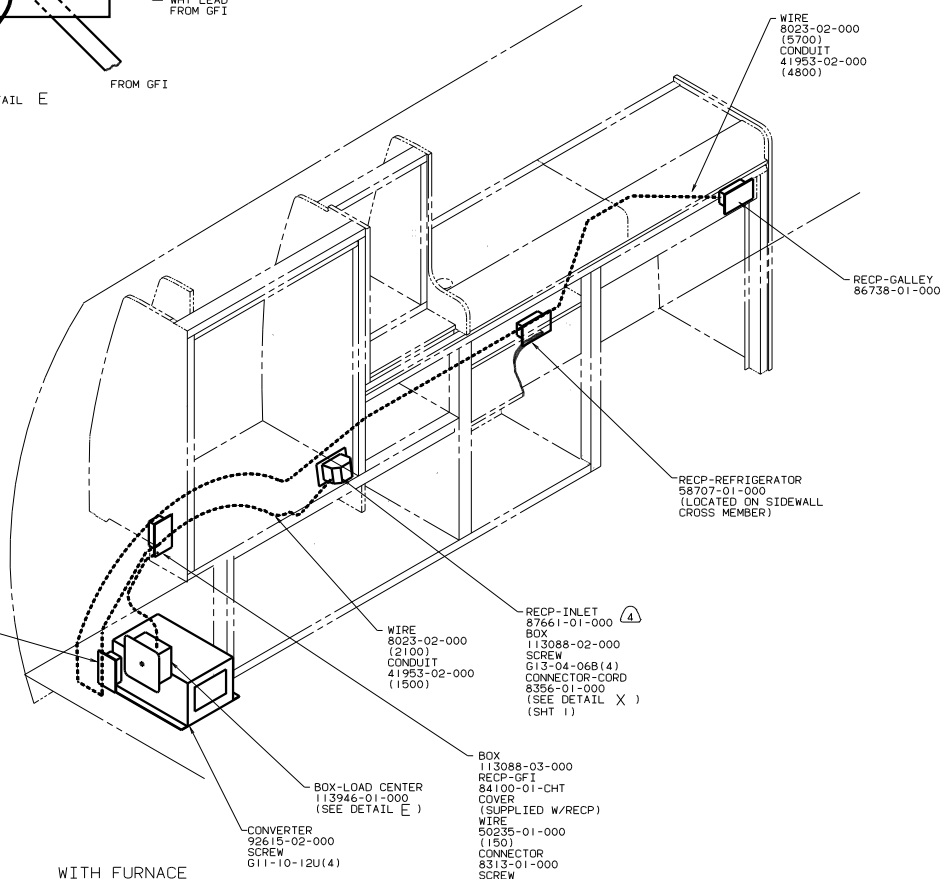
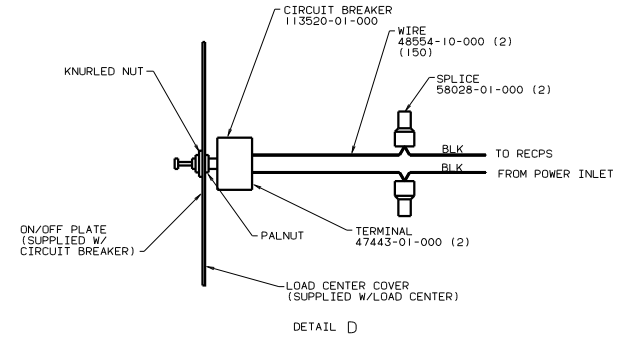
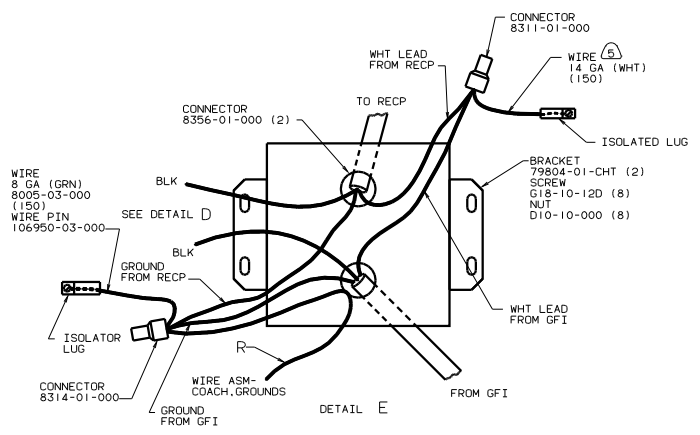
DANGER

Danger of electrical shock, burns or death. Always remove all power sources before attempting any repair, service or diagnostic work. Power can be present from shore power, generator, inverter or battery. All power sources must be disabled and secured before performing any service.



CAUTION

If you lack the skills, tools or equipment to perform diagnostic or repair work leave such work to an authorized Winnebago Industries dealer or other qualified shop.



WITH FURNACE

- NOTES:
- 5) LEAD IS TO BE MADE FROM WIRE 8023-02-000.
 - 4) CORD-POWER 87660-02-000 TO BE PROVIDED LOOSE, STORED IN RH REAR COMPT.
 - 3. ALL GROUND WIRES TO BE COVERED WITH TUBING 8041-02-000.
 - 2. ALL 110V WIRES ARE TO BE CLAMPED WITH CLAMP 104-05-000 WITHIN 200 OF OUTLET BOXES. USE SCREW G67-10-12B.
 - 1. ALL WIRES TO BE CLAMPED WITH CLAMP 10495-01-000 OR CLIP 80734-01-000 EVERY 600. USE SCREW G67-10-12B UNLESS OTHERWISE SPECIFIED.

- RECP-REFRIGERATOR 58707-01-000 (LOCATED ON SIDEWALL CROSS MEMBER)
- RECP-INLET BOX 87661-01-000
- SCREW 113088-02-000
- CONNECTOR-CORD 8356-01-000 (SEE DETAIL X) (SHT 1)
- BOX 113088-03-000
- RECP-GFI 84100-01-CHT
- COVER (SUPPLIED W/RECP)
- WIRE 50235-01-000 (150)
- CONNECTOR 8313-01-000
- SCREW G13-06-08B (4)
- SCREW-GROUND 103291-01-000
- TERMINAL 8328-01-000

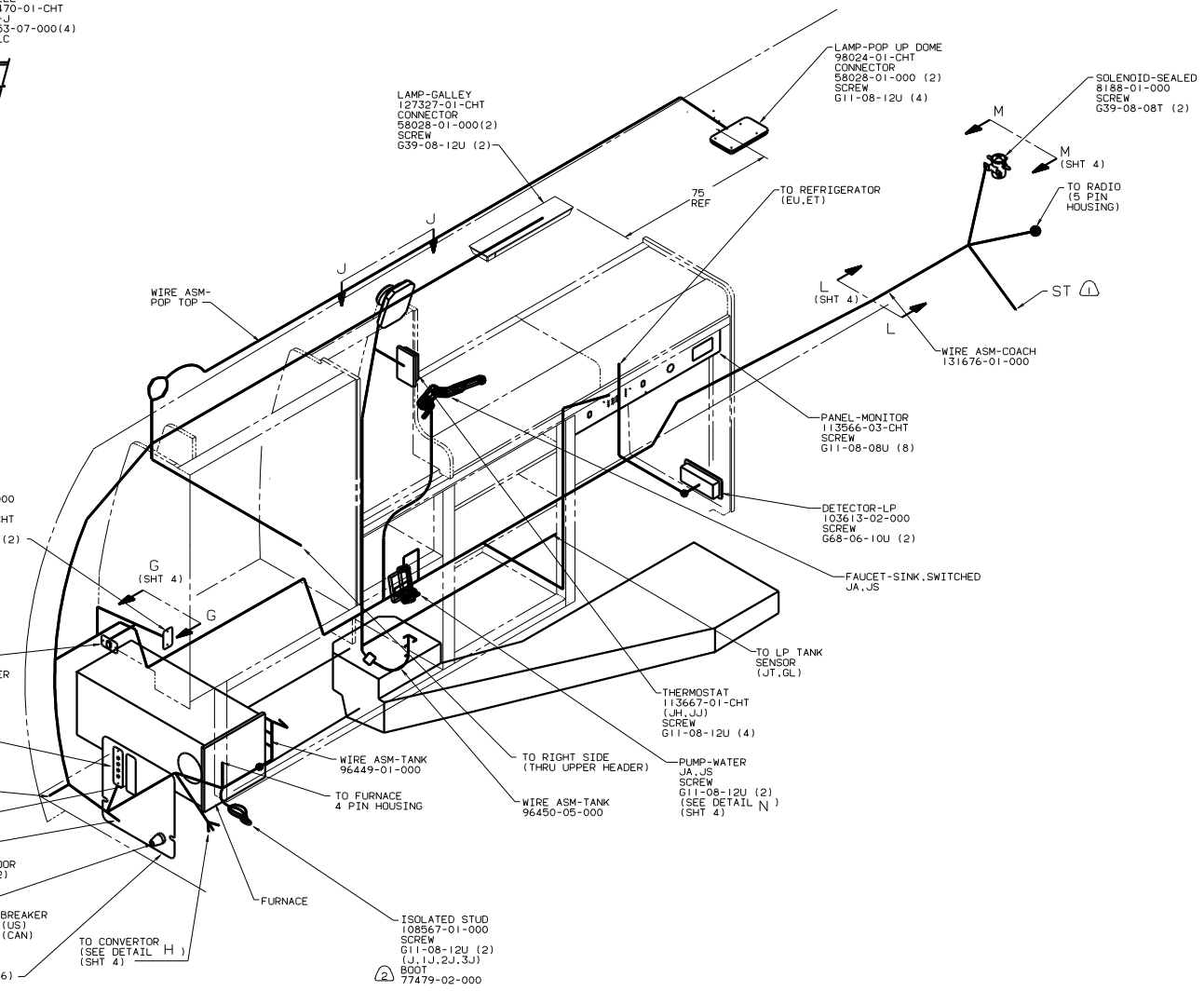
FOR ELECTRICAL TORQUE SPECIFICATIONS SEE DWG NO. 128783-01-000

110V (CAN)
LEFT SIDE
97 V117RG

TITLE		122558	
WIRING INSTL-BODY(110V CSA)		122558	
NO. OF SHEETS	TOTAL SHEETS	SHEET NO.	TOTAL SHEETS
5	5	2	5



VIEW J-J



WITH FURNACE

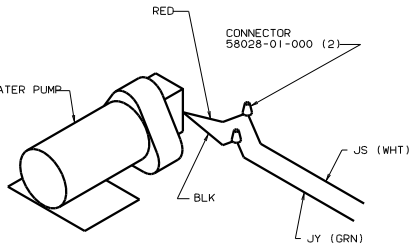
- (2) ALL WIRES TO PASS THRU SLEEVE IN BOOT.
1. CONNECTS TO YELLOW TERMINAL STRIP BLOCK, LOCATED BEHIND VW FUSE BLOCK ASM, FUSE S4.

NOTES:

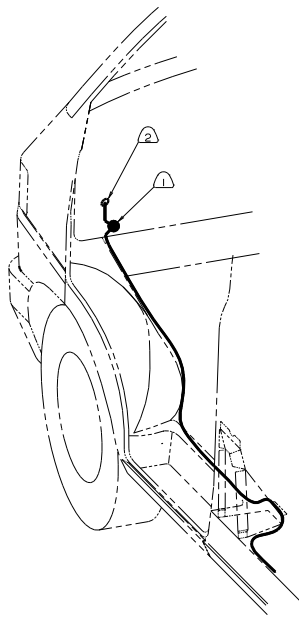
FOR ELECTRICAL
TORQUE
SPECIFICATIONS
SEE DWG NO
128783-01-000

12V LEFT SIDE
(US/CAN)
97 V117RG

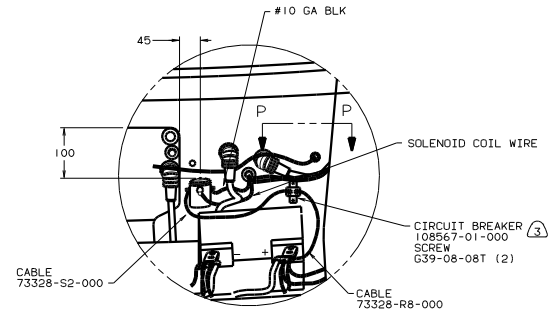
TITLE: WIRING INSTL-BODY(12 L)	
30 100 1000 10000 100000 1000000	1:1
SHEET 3 OF 5	122558



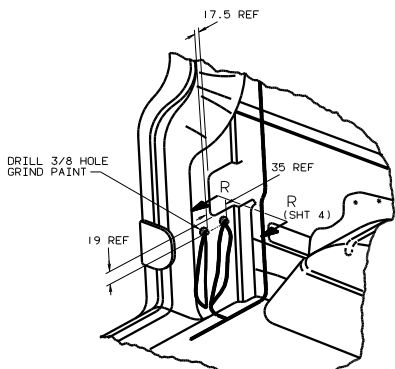
DETAIL N



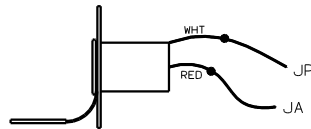
VIEW L-L



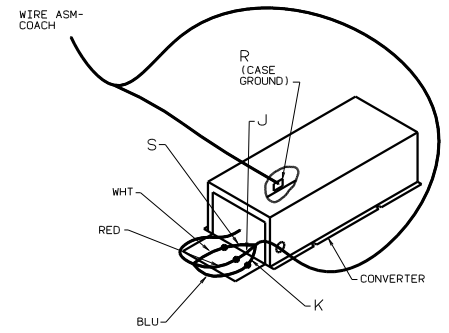
VIEW M-M



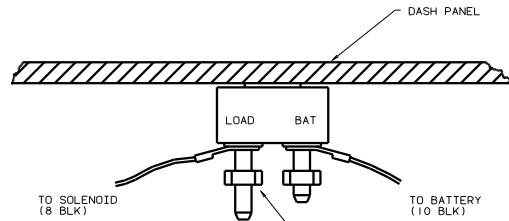
DETAIL K



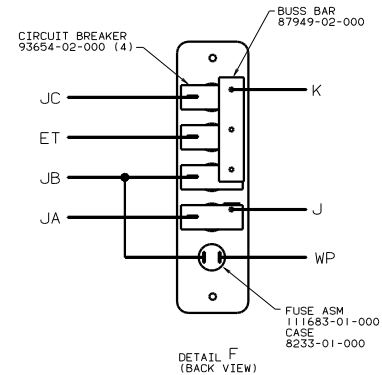
DETAIL G-G



DETAIL H



VIEW P-P



DETAIL F (BACK VIEW)

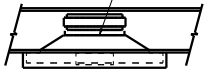
- NOTES:
- ③ LOCATION OF BATTERY LEAD ON CIRCUIT BREAKER IS CRITICAL FOR CORRECT OPERATION.
 - ② ROUTE WIRE THROUGH FIREWALL WITH EXISTING VW WIRES.
 - ① FUSE TO BE SECURED TO VW FUSE PANEL.

FOR ELECTRICAL TORQUE SPECIFICATIONS SEE DWG NO. 128783-01-000

12V DETAILS
97 V117RC

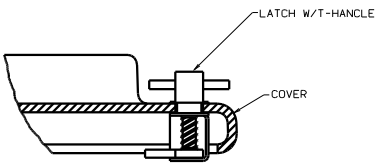
TITLE	WIRING INSTL-BODY(12V)
DO NOT SCALE DRAWING	FIG. NO.
SHEET 4 OF 5	122558

SPEAKER-RADIO
 110469-01-000
 SCREW
 G11-08-12T(4)
 GRILLE
 110470-01-CHT
 NUT-J
 63253-07-000(4)
 (KX(+).LB(-))

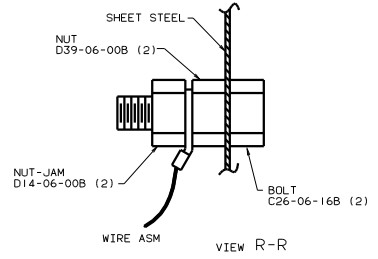


VIEW U-U

DETECTOR-CD2
 112320-01-000
 SCREW
 G11-08-12U (4)



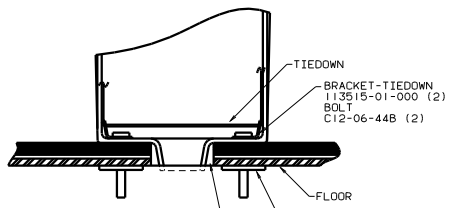
DETAIL S-S



VIEW R-R

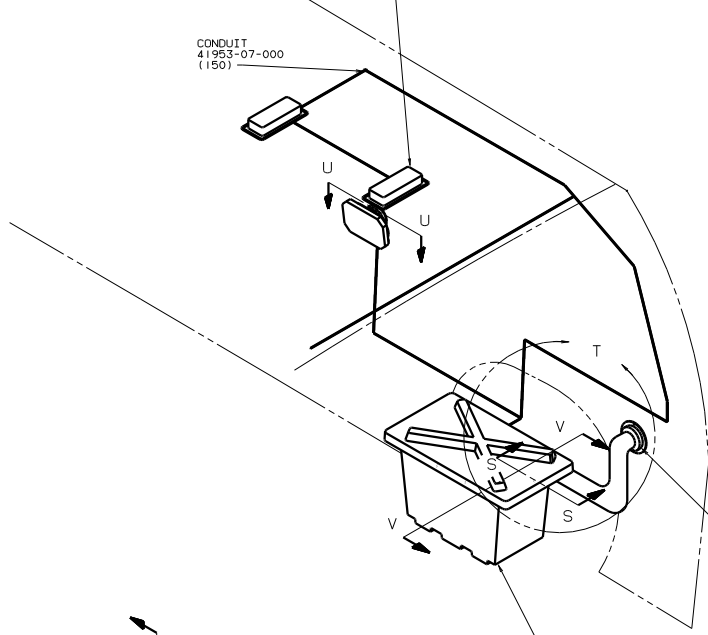
LAMP-HEADLINER
 112643-02-000(2)
 TRIM
 112642-02-CHT(2)
 CONNECTOR
 58028-01-000(4)
 SCREW
 G13-04-06B(8)

CONDUIT
 41953-07-000
 (150)



DETAIL V-V

WASHER
 E13-18-00B (2)
 NUT
 D39-06-00B (2)



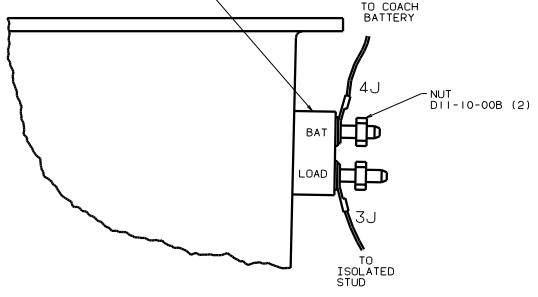
VENT-SIDEWALL
 89048-01-CHT
 HOSE
 114667-01-000(760)
 CLAMP
 62401-02-000(2)
 SCREW
 G39-10-10T(2)

BATTERY
 63739-02-000
 TIEDOWN
 84993-01-000
 COVER-BATTERY BOX
 113514-01-CHT
 BOX-BATTERY, SINGLE
 11394-01-CHT
 LATCH-GRIP, ADJUSTABLE
 113517-01-000
 RIVET
 H15-06-06R(2)
 SEAL
 64075-07-000
 (1335)

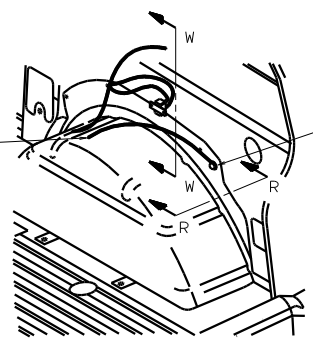
TO NEG. POST
 ON BATTERY

BOLT
 C12-06-20B
 NUT
 D14-06-00B (2)
 GROUND STUD
 OPEN HOLE
 TO 3/8
 GRIND PAINT

③ CIRCUIT BREAKER
 108567-01-000
 RIVET
 H16-06-10R (2)
 BOOT
 77479-02-000



VIEW W-W



DETAIL T

- ③ LOCATION OF BATTERY LEAD ON CIRCUIT BREAKER IS CRITICAL FOR CORRECT OPERATION.
- ② BOTH WIRES TO PASS THRU SLEEVE IN BOOT.
- ① LOCATION OF COACH BATTER CIRCUIT BREAKER IS CRITICAL FOR CORRECT OPERATION.

NOTES:

FOR ELECTRICAL TORQUE SPECIFICATIONS SEE DWG NO. 128783-01-000

12V RIGHT SIDE (US/CAN)
 97 V117 RG

TITLE: WIRING INSTL-BODY(12_R)	
NO. OF SHEETS	TOTAL SHEETS
5 OF 5	5
DWG NO. 122558	