



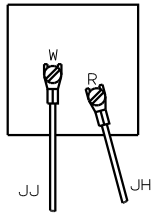
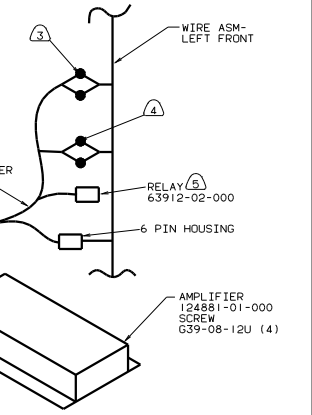
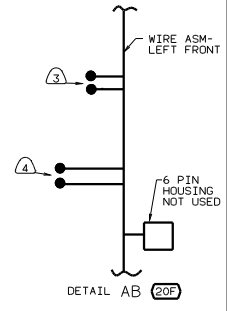
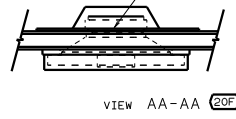
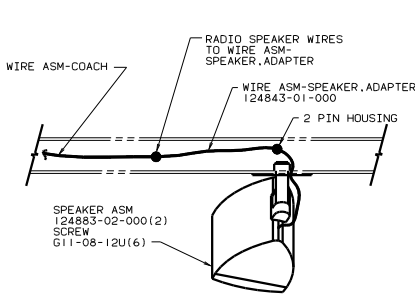
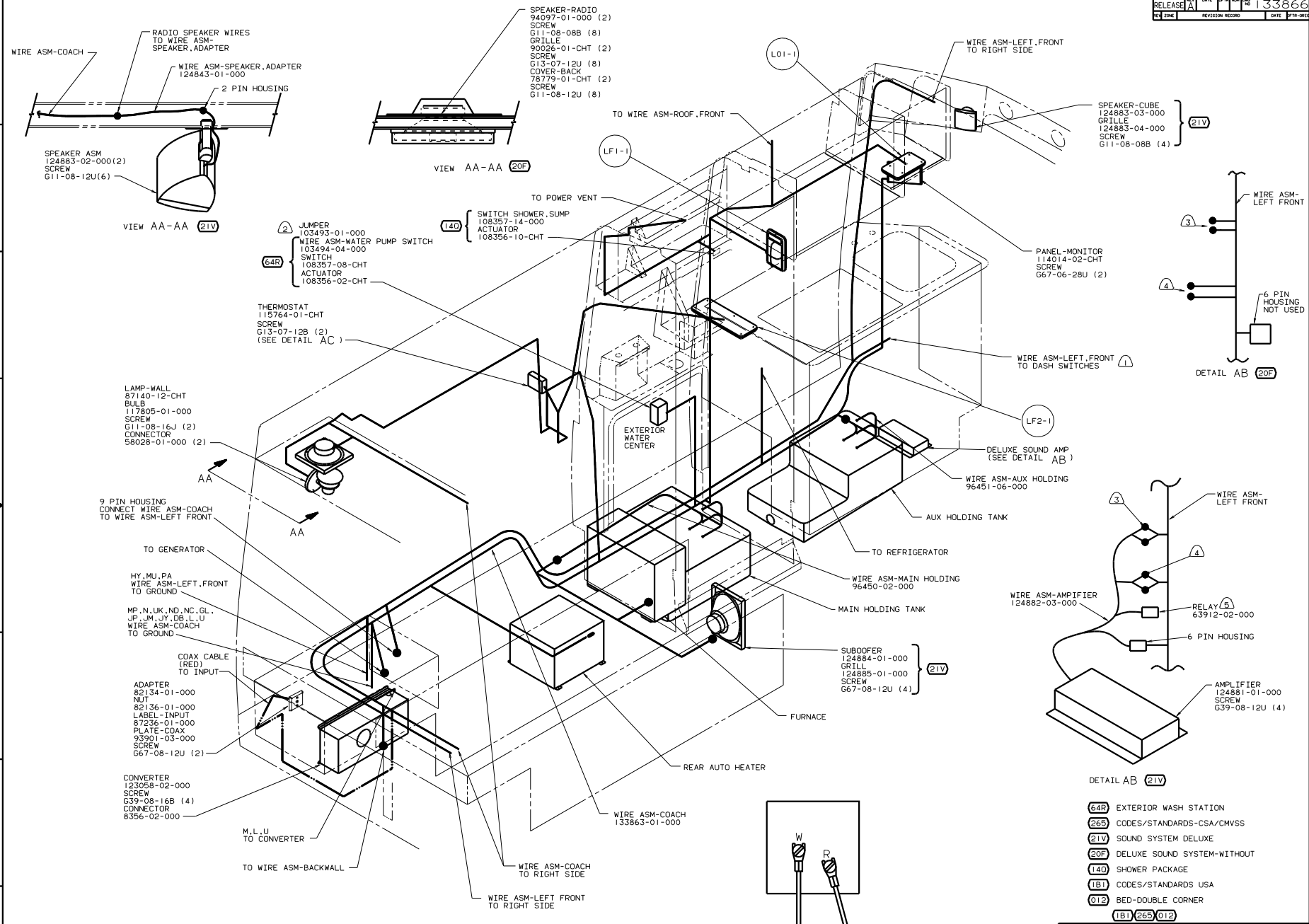
DANGER

Danger of electrical shock, burns or death. Always remove all power sources before attempting any repair, service or diagnostic work. Power can be present from shore power, generator, inverter or battery. All power sources must be disabled and secured before performing any service.



CAUTION

If you lack the skills, tools or equipment to perform diagnostic or repair work leave such work to an authorized Winnebago Industries dealer or other qualified shop.

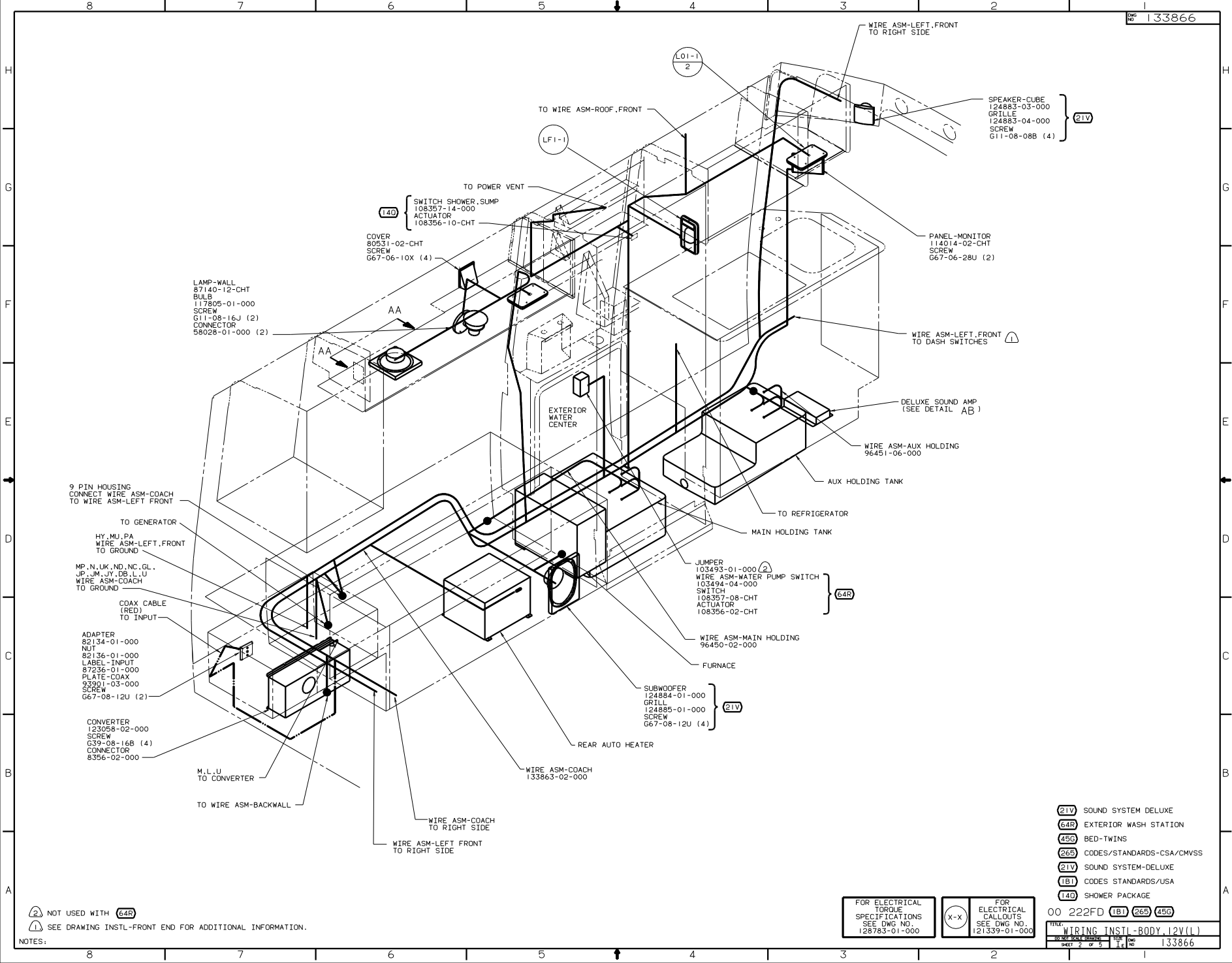


- (5) RELAY HOUSING PROVIDED WITH WIRE ASSEMBLY-AMPLIFIER
 - (4) CONNECT MATING 4 PIN HOUSING.
 - (3) CONNECT MATING 5 PIN HOUSING.
 - (2) NOT USED WITH (64R)
 - (1) SEE DRAWING INSTL-FRONT END FOR ADDITIONAL INFORMATION.
- NOTES:

FOR ELECTRICAL TORQUE SPECIFICATIONS SEE DWG NO. 128783-01-000

FOR ELECTRICAL CALLOUTS SEE DWG NO. 121339-01-000

(64R) EXTERIOR WASH STATION (265) CODES/STANDARDS-CSA/CMVSS (21V) SOUND SYSTEM DELUXE (20F) DELUXE SOUND SYSTEM-WITHOUT (140) SHOWER PACKAGE (1B1) CODES/STANDARDS USA (012) BED-DOUBLE CORNER (1B1) (265) (012)			WINNEBAGO 00 222FD	
			DATE UNDESIGNED TOLERANCES ARE: MATERIAL: DATE HALF DIM (X.X) DATE ONE-PLACE (X.XX) DATE TWO-PLACE (X.XXX) DATE ANG. DATE HIDDEN WALK INDICATOR	
DRAWN: _____ TITLE: WIRING INSTL-BODY, 12V(L) CHECKED: _____ DATE: _____ DESIGNED: _____ DATE: _____ ALL DIMENSIONS ARE IN MILLIMETERS SHEET 1 OF 5		REF: 130478-L 133866		



- LAMP-WALL
87140-12-CHT
BULB
117805-01-000
SCREW
G11-08-16J (2)
CONNECTOR
58028-01-000 (2)
- COVER
80531-02-CHT
SCREW
G67-06-10X (4)
- SWITCH SHOWER, SUMP
ACTUATOR
108357-14-000
108356-10-CHT
- TO POWER VENT
- TO WIRE ASM-ROOF, FRONT
- TO WIRE ASM-LEFT FRONT TO RIGHT SIDE
- TO WIRE ASM-LEFT FRONT TO DASH SWITCHES
- DELUXE SOUND AMP
(SEE DETAIL AB)
- WIRE ASM-AUX HOLDING
96451-06-000
- AUX HOLDING TANK
- TO REFRIGERATOR
- MAIN HOLDING TANK
- JUMPER
103493-01-000 (2)
WIRE ASM-WATER PUMP SWITCH
103494-04-000
SWITCH
108357-08-CHT
ACTUATOR
108356-02-CHT
- WIRE ASM-MAIN HOLDING
96450-02-000
- FURNACE
- SUBWOOFER
124884-01-000
GRILL
124885-01-000
SCREW
G67-08-12U (4)
- REAR AUTO HEATER
- WIRE ASM-COACH
133863-02-000
- WIRE ASM-COACH TO RIGHT SIDE
- WIRE ASM-LEFT FRONT TO RIGHT SIDE
- WIRE ASM-COACH TO INPUT
- ADAPTER
82134-01-000
NUT
82136-01-000
LABEL-INPUT
87236-01-000
PLATE-COAX
93901-03-000
SCREW
G67-08-12U (2)
- CONVERTER
123058-02-000
SCREW
G39-08-16B (4)
CONNECTOR
8356-02-000
- M.L.U
TO CONVERTER
- TO WIRE ASM-BACKWALL
- TO GENERATOR
- HY, MU, PA
WIRE ASM-LEFT FRONT
TO GROUND
- MP, N, UK, ND, NC, GL,
JP, JM, JY, DB, LU
WIRE ASM-COACH
TO GROUND
- COAX CABLE
(RED)
TO INPUT
- 9 PIN HOUSING
CONNECT WIRE ASM-COACH
TO WIRE ASM-LEFT FRONT

- SPEAKER-CUBE
124883-03-000
GRILLE
124883-04-000
SCREW
G11-08-08B (4)

- PANEL-MONITOR
114014-02-CHT
SCREW
G67-06-28U (2)

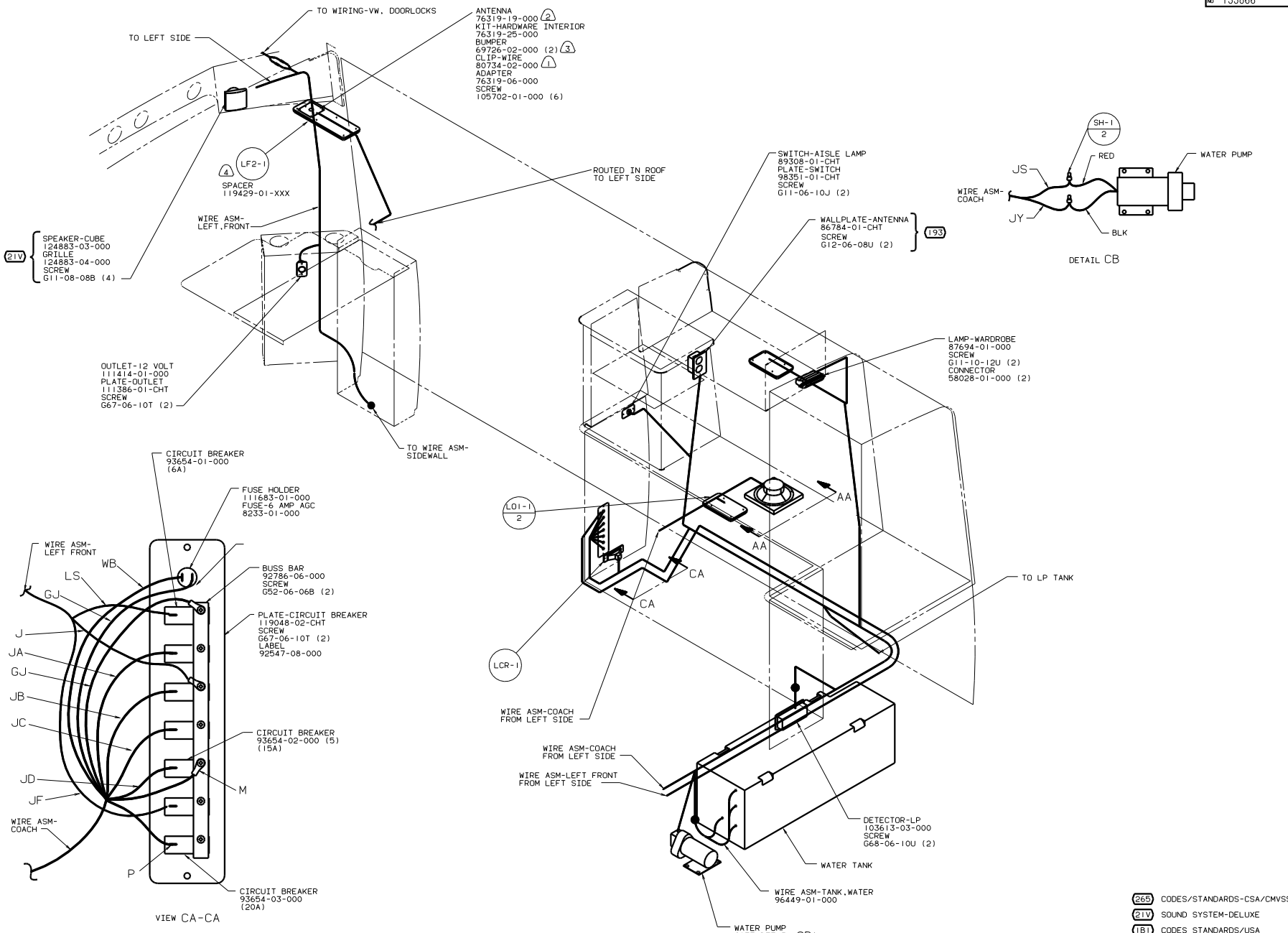
- (21V) SOUND SYSTEM DELUXE
- (64R) EXTERIOR WASH STATION
- (45G) BED-TWINS
- (26S) CODES/STANDARDS-CSA/CMVSS
- (21V) SOUND SYSTEM-DELUXE
- (1B1) CODES STANDARDS/USA
- (14D) SHOWER PACKAGE

(2) NOT USED WITH (64R)
 (1) SEE DRAWING INSTL-FRONT END FOR ADDITIONAL INFORMATION.

FOR ELECTRICAL
 TORQUE
 SPECIFICATIONS
 SEE DWG NO.
 128783-01-000

(X-X)
 FOR ELECTRICAL
 CALLOUTS
 SEE DWG NO.
 121339-01-000

00 222FD (1B1) (26S) (45G)
 TITLE: WIRING INSTL-BODY, 12V(L)
 SHEET 2 OF 5
 133866



- (4) PILOT HOLES MUST BE DRILLED FOR SCREW CLEARANCE.
- (3) ADD RUBBER BUMPER TO ROOF UNDER EACH END OF ANTENNA IN DOWN POSITION WHICH MAY IN CONTACT WITH ROOF.
- (2) SEE DRAWING 76319-01-000 FOR ADDITIONAL INFORMATION.
- (1) LOCATE TO RETAIN CABLE BUT NOT RESTRICT TRAVEL OF ANTENNA.

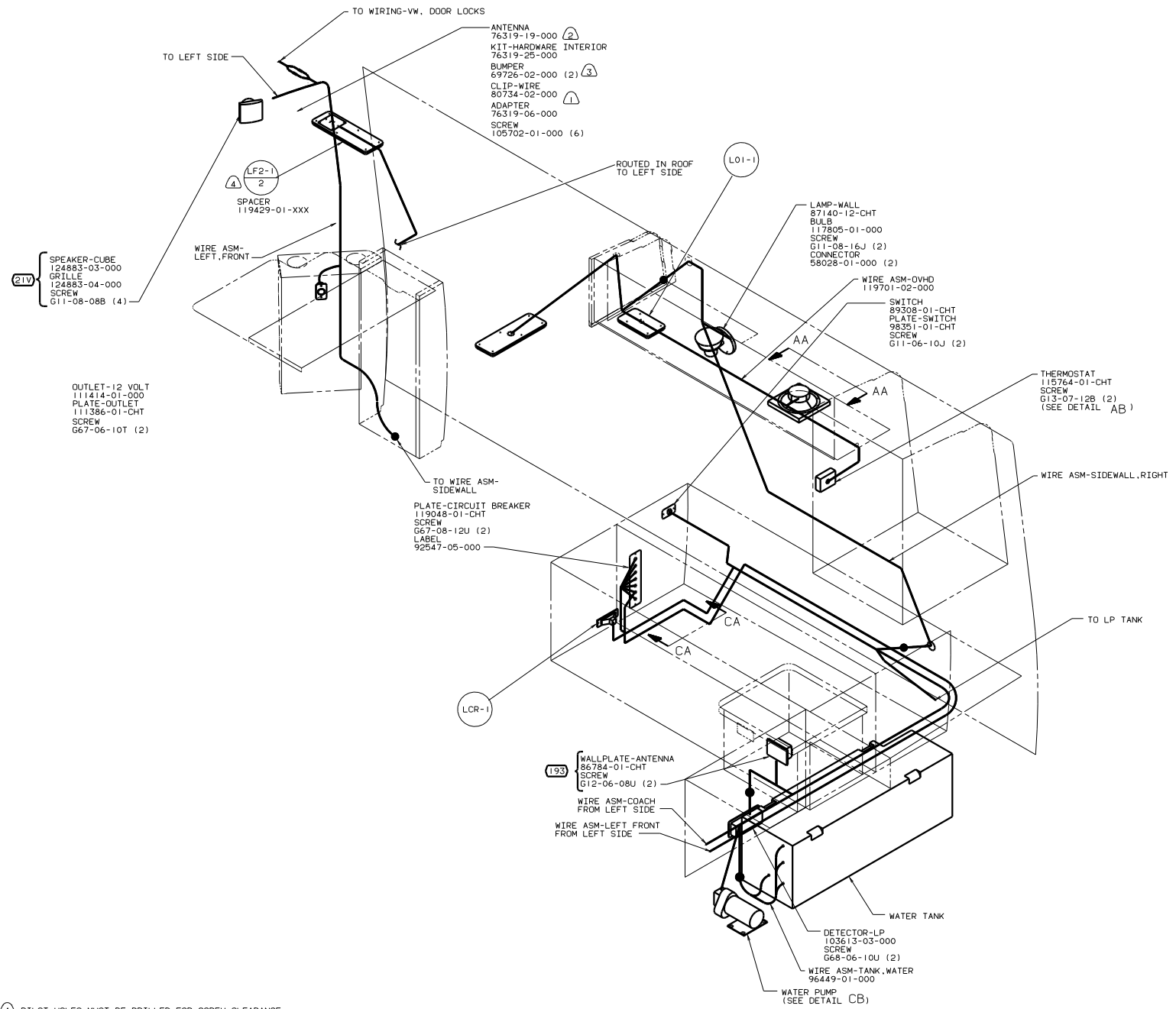
- (265) CODES/STANDARDS-CSA/CMVSS
- (21V) SOUND SYSTEM-DELUXE
- (1B1) CODES STANDARDS/USA
- (193) TV ANTENNA
- (012) BED-DOUBLE-CORNER

FOR ELECTRICAL TORQUE SPECIFICATIONS SEE DWG NO. 128783-01-000

FOR ELECTRICAL CALLOUTS SEE DWG NO. 121339-01-000

00 222FD (1B1) (265) (012)

TITLE: WIRING INSTL-BODY, 12V(R)
 SHEET 3 OF 5



- (4) PILOT HOLES MUST BE DRILLED FOR SCREW CLEARANCE.
- (3) ADD RUBBER BUMPER TO ROOF UNDER EACH END OF ANTENNA IN DOWN POSITION WHICH MAY IN CONTACT WITH ROOF.
- (2) SEE DRAWING 76319-01-000 FOR ADDITIONAL INFORMATION.
- (1) LOCATE TO RETAIN CABLE BUT NOT RESTRICT TRAVEL OF ANTENNA.

NOTES:

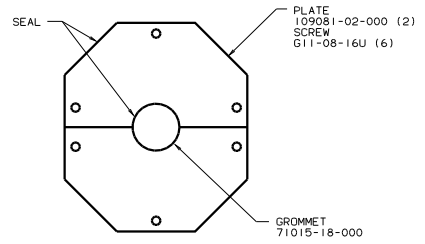
- (456) BED-TWINS
- (265) CODES/STANDARDS-CSA/CMVSS
- (21V) SOUND SYSTEM-DELUXE
- (1B1) CODES STANDARDS/USA
- (193) TV ANTENNA

FOR ELECTRICAL
TORQUE
SPECIFICATIONS
SEE DWG NO.
128783-01-000

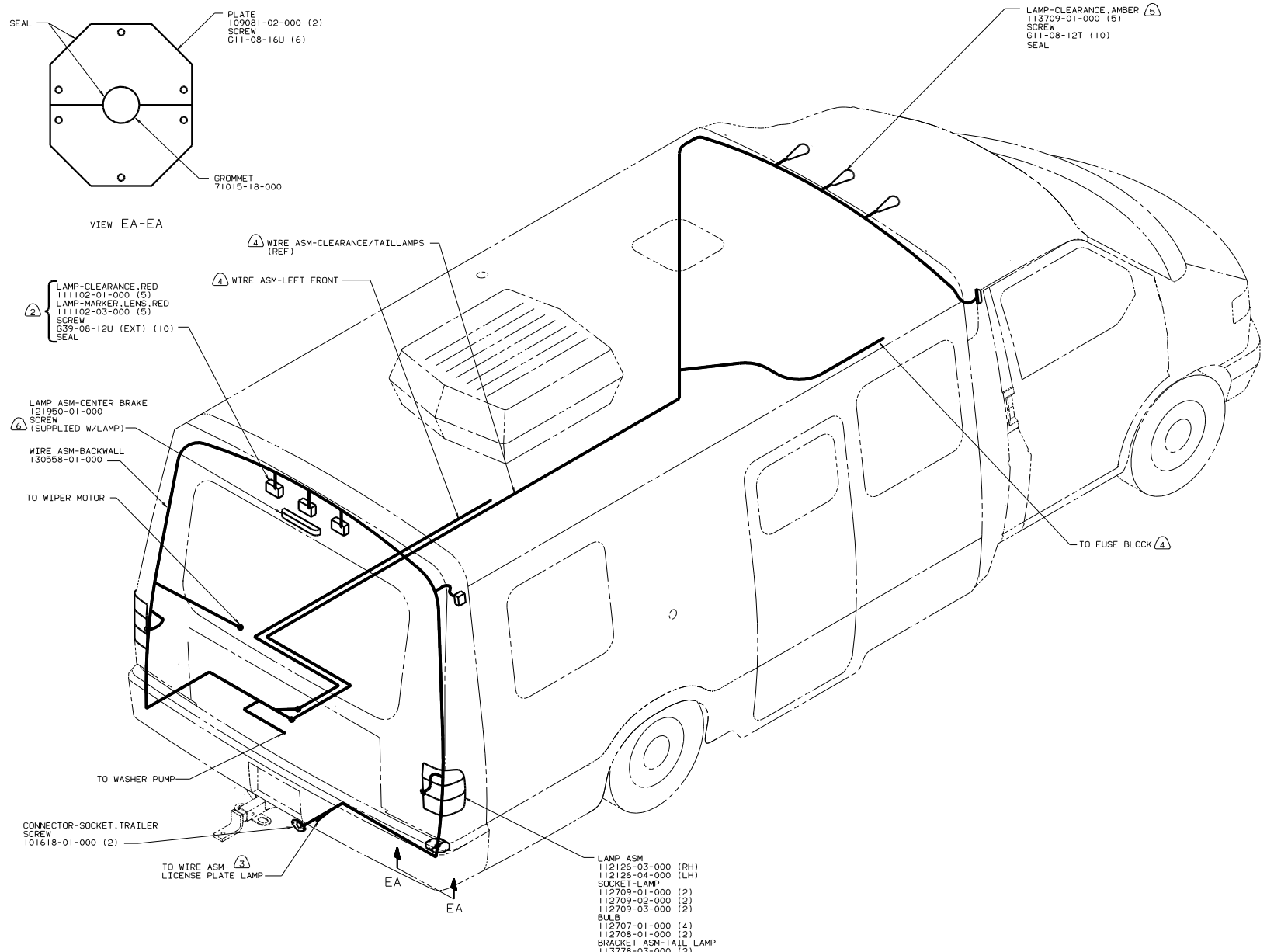
(X-X)
FOR
ELECTRICAL
CALLOUTS
SEE DWG NO.
121339-01-000

00 222FD (1B1) (265) (456)

TITLE	WIRING INSTL-BODY, 12V(R)
DO NOT SCALE DRAWING	FIG. NO.
SHEET 4 OF 5	133866



VIEW EA-EA



- ⑥ ON INTERIOR OF CAP. GRIND OFF TIP OF SCREW PRIOR TO SEALING (TO PROVIDE INNER LINER CLEARANCE).
 - ⑤ CONNECT WIRE HX (PUR) TO RED WIRE AND WIRE MS (GRN) TO WHT WIRE.
 - ④ SEE WIRING INSTL-FRONT END FOR ADDITIONAL INFORMATION.
 - ③ SEE BUMPER ASM-REAR FOR ADDITIONAL INFORMATION.
 - ② LOCATE ON CENTER OF HOLE IN CAP ASM-REAR.
1. CONNECTOR-PLUG, TRAILER 113589-01-000 TO BE SUPPLIED LOOSE IN COACH WITH TRAILER TOW PACKAGE.

NOTES:

FOR ELECTRICAL
TORQUE
SPECIFICATIONS
SEE DWG NO.
128783-01-000

FOR ELECTRICAL
CALLOUTS
SEE DWG NO.
121339-01-000

②65 CODES/STANDARDS-CSA/CMVSS
①B1 CODES STANDARDS/USA
00 222FD ①B1 ②65

WIRING INSTL-BODY, 12V(EXT)
SHEET 5 OF 5
133866