



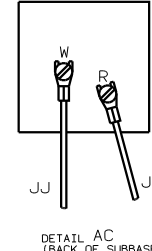
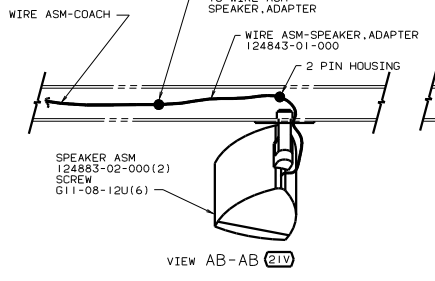
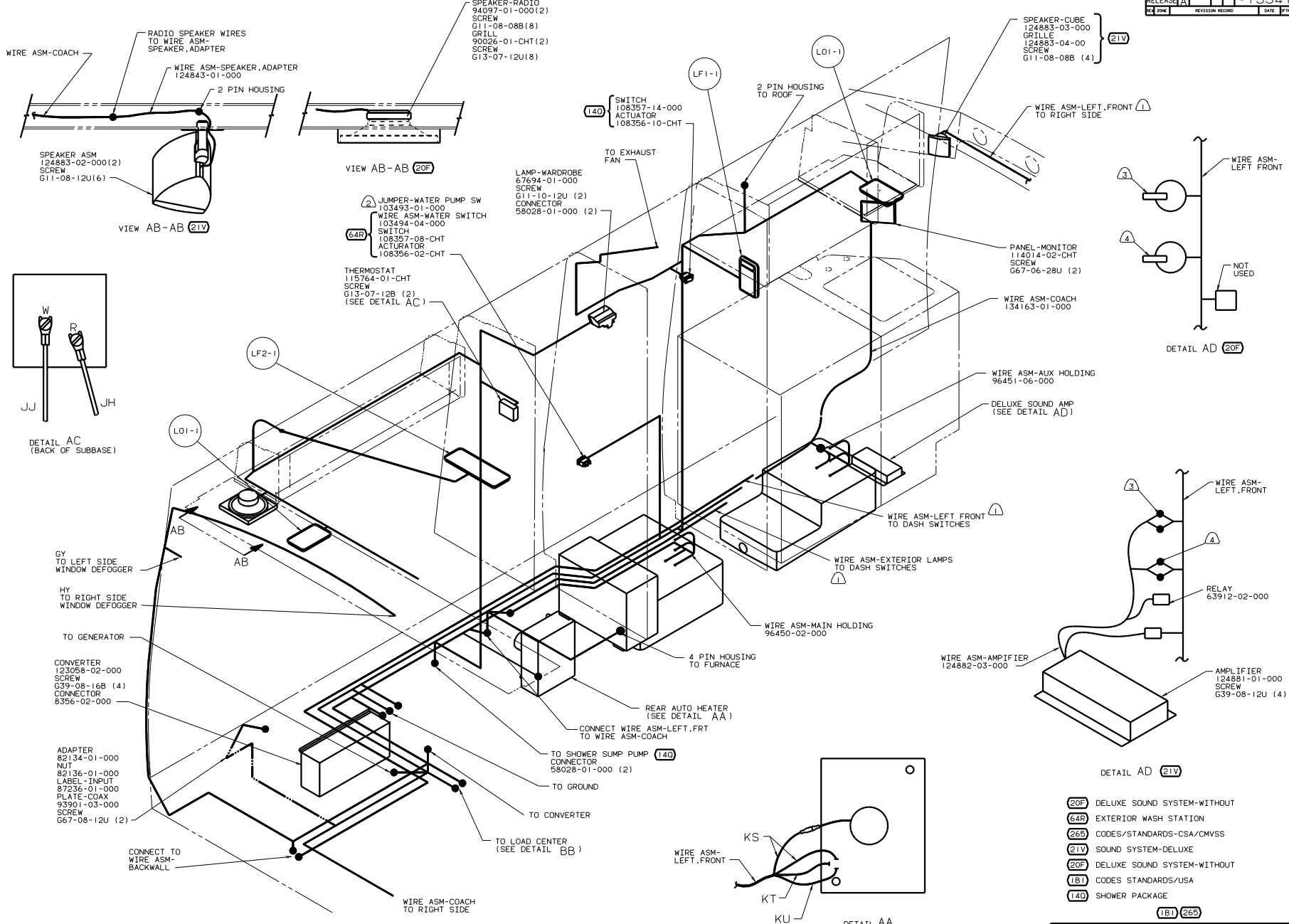
**DANGER**

**Danger of electrical shock, burns or death.** Always remove all power sources before attempting any repair, service or diagnostic work. Power can be present from shore power, generator, inverter or battery. All power sources must be disabled and secured before performing any service.



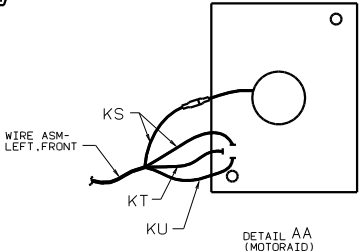
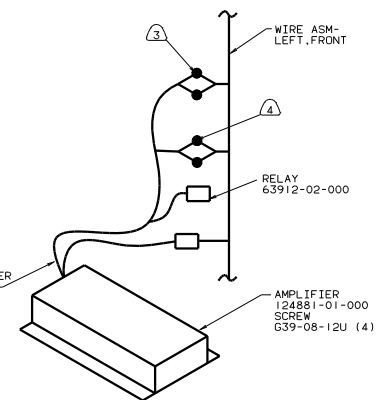
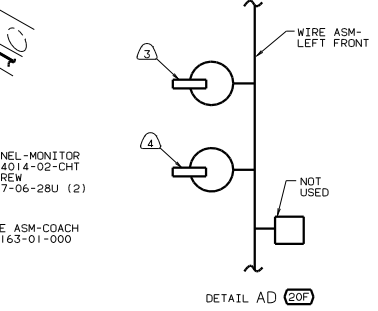
**CAUTION**

If you lack the skills, tools or equipment to perform diagnostic or repair work leave such work to an authorized Winnebago Industries dealer or other qualified shop.



- SPEAKER-RADIO 94097-01-000 (2)  
SCREW G11-08-08B (8)  
GRILL 90026-01-CHT (2)  
SCREW G13-07-12U (8)
- SPEAKER-ASM 124883-02-000 (2)  
SCREW G11-08-12U (6)
- JUMPER-WATER PUMP SW 103493-01-000  
WIRE ASM-WATER SWITCH 103494-04-000  
SWITCH 108357-08-CHT  
ACTUATOR 108356-02-CHT
- THERMOSTAT 115764-01-CHT  
SCREW G13-07-12B (2)  
(SEE DETAIL AC)
- LAMP-WARDROBE 67694-01-000  
SCREW G11-10-12U (2)  
CONNECTOR 58028-01-000 (2)

- SPEAKER-CUBE 124883-03-000  
GRILLE 124883-04-00  
SCREW G11-08-08B (4)



- CONNECT MATING 4 PIN HOUSING
- CONNECT MATING 5 PIN HOUSING.
- NOT USED WITH 64R
- SEE WIRING INSTL-FRONT END FOR ADDITIONAL INFORMATION.

- 20F DELUXE SOUND SYSTEM-WITHOUT
- 64R EXTERIOR WASH STATION
- 265 CODES/STANDARDS-CSA/CMVSS
- 21V SOUND SYSTEM-DELUXE
- 20F DELUXE SOUND SYSTEM-WITHOUT
- 1B1 CODES STANDARDS/USA
- 140 SHOWER PACKAGE

FOR ELECTRICAL TORQUE SPECIFICATIONS SEE DWG NO. 128783-01-000

X-X FOR ELECTRICAL CALLOUTS SEE DWG NO. 121339-01-000

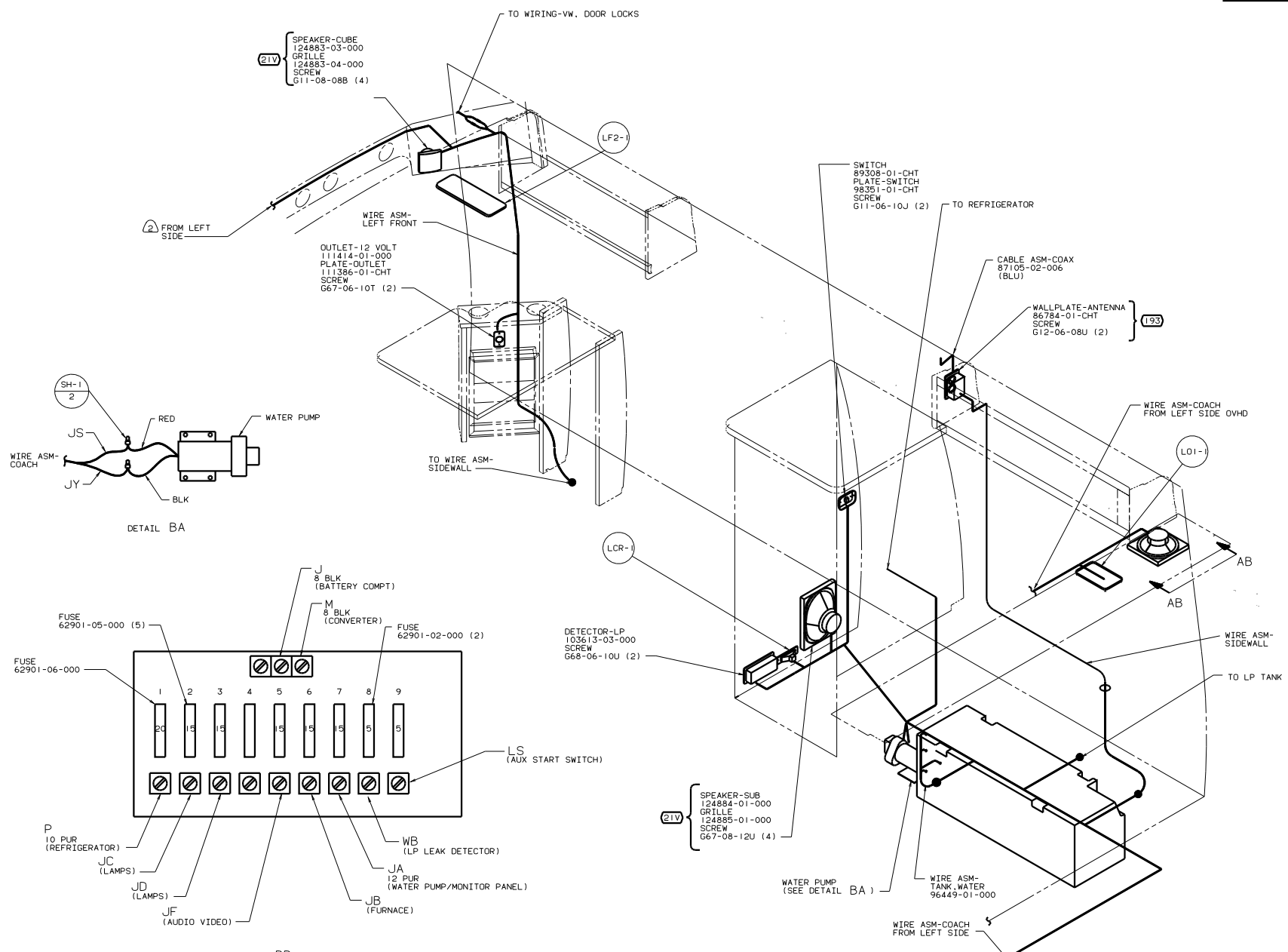
WINNEBAGO

DATE			UNSPECIFIED TOLERANCES ARE:		
DATE	DATE	DATE	WHOLE DIM IN.	FRACTIONAL DIM IN.	MATERIAL
DATE	DATE	DATE	ONE-PLACE (X.X1)	TWO-PLACE (X.XX)	
DATE	DATE	DATE	ONE-PLACE (X.XXX)	TWO-PLACE (X.XXX)	
DATE	DATE	DATE	THIRD PLACE (X.XXX)	FOURTH PLACE (X.XXXX)	
DATE	DATE	DATE	FIFTH PLACE (X.XXXXX)	SIXTH PLACE (X.XXXXX)	
DATE	DATE	DATE	SEVENTH PLACE (X.XXXXX)	EIGHTH PLACE (X.XXXXX)	
DATE	DATE	DATE	NINTH PLACE (X.XXXXX)	TENTH PLACE (X.XXXXX)	

LAYOUT TITLE: WIRING INSTL-BODY, 12V(L)

DWG # SCALE: NONE TO THE SCALE SHOWN

SHEET 1 OF 3



2 SEE WIRING INSTL-FRONT END FOR ADDITIONAL INFORMATION.

1 WIRE ROUTED IN SIDEWALL.

FOR ELECTRICAL TORQUE SPECIFICATIONS SEE DWG NO. 128783-01-000

X-X

FOR ELECTRICAL CALLOUTS SEE DWG NO. 121339-01-000

265 CODES/STANDARDS-CSA/CMVSS

21V SOUND SYSTEM-DELUXE

1B1 CODES STANDARDS/USA

193 TV ANTENNA

00 222HD 1B1 265

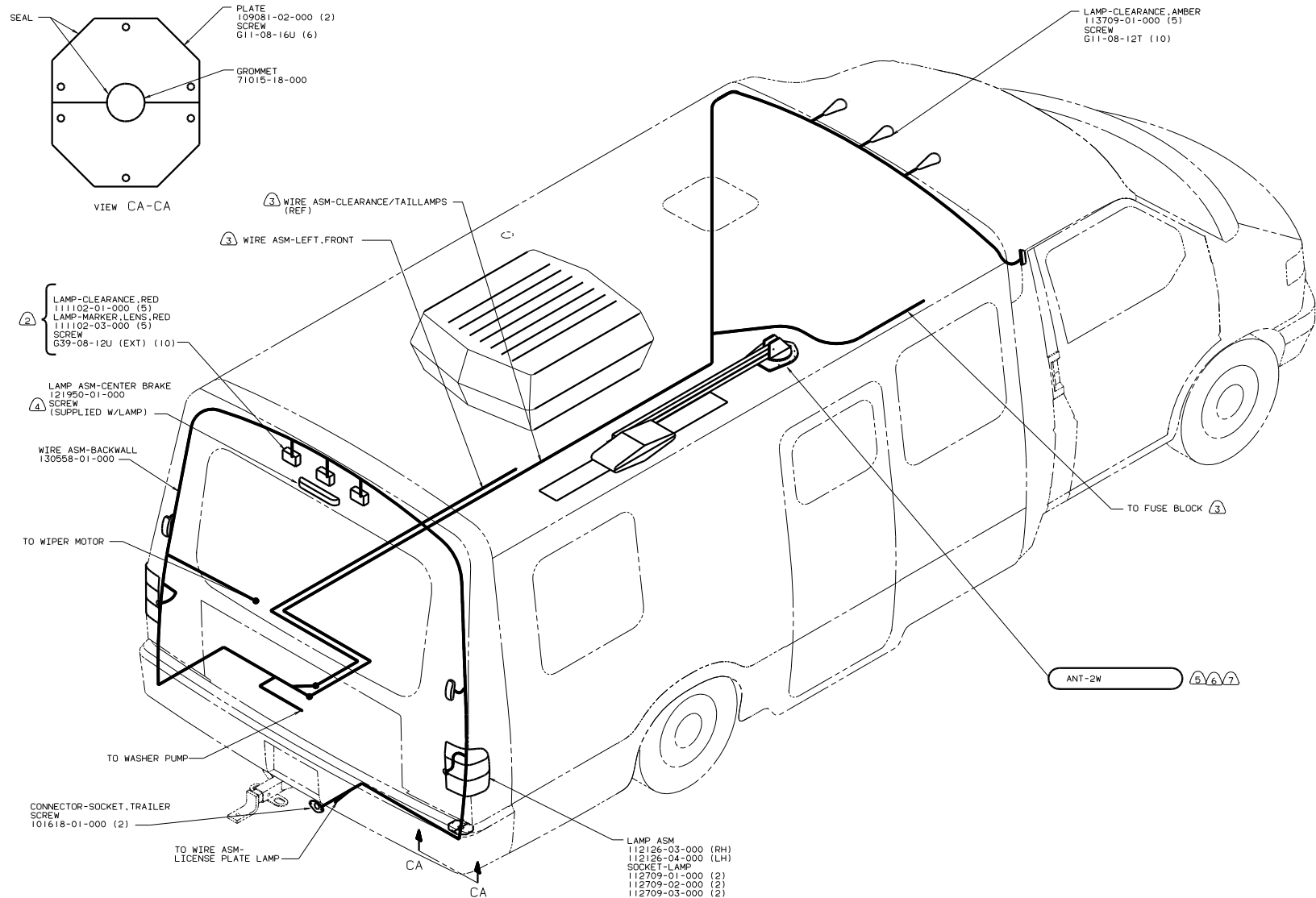
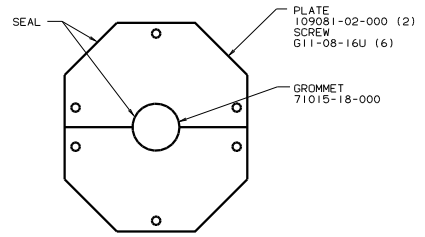
TITLE: WIRING INSTL-BODY.12V(R)

NO. OF SHEETS: 3

SHEET: 2 OF 3

DATE: 1/6

133419



- ① ADD RUBBER BUMPER TO ROOF UNDER EACH END OF ANTENNA IN DOWN POSITION WHICH MAY COME IN CONTACT WITH ROOF.
  - ② SEE DRAWING 76319-01-000 FOR ADDITIONAL INFORMATION.
  - ③ LOCATE TO RETAIN CABLE BUT NOT RESTRICT TRAVEL OF ANTENNA.
  - ④ ON INTERIOR OF CAP, GRIND OFF TIP OF SCREW PRIOR TO SEALING (TO PROVIDE INNER LINER CLEARANCE).
  - ⑤ SEE WIRING INSTL-FRONT END FOR ADDITIONAL INFORMATION.
  - ⑥ LOCATE ON CENTER OF HOLE IN CAP ASM-REAR.
1. CONNECTOR-PLUG, TRAILER 113589-01-000 TO BE SUPPLIED LOOSE IN COACH WITH TRAILER TOW PACKAGE.

NOTES:

②65 CODES/STANDARDS-CSA/CMVSS  
 ①B1 CODES STANDARDS/USA

FOR ELECTRICAL TORQUE SPECIFICATIONS SEE DWG NO. 128783-01-000

00 222HD ①B1 ②65  
 WIRING INSTL-BODY, 12V(EXT)  
 SHEET 3 OF 3

133419