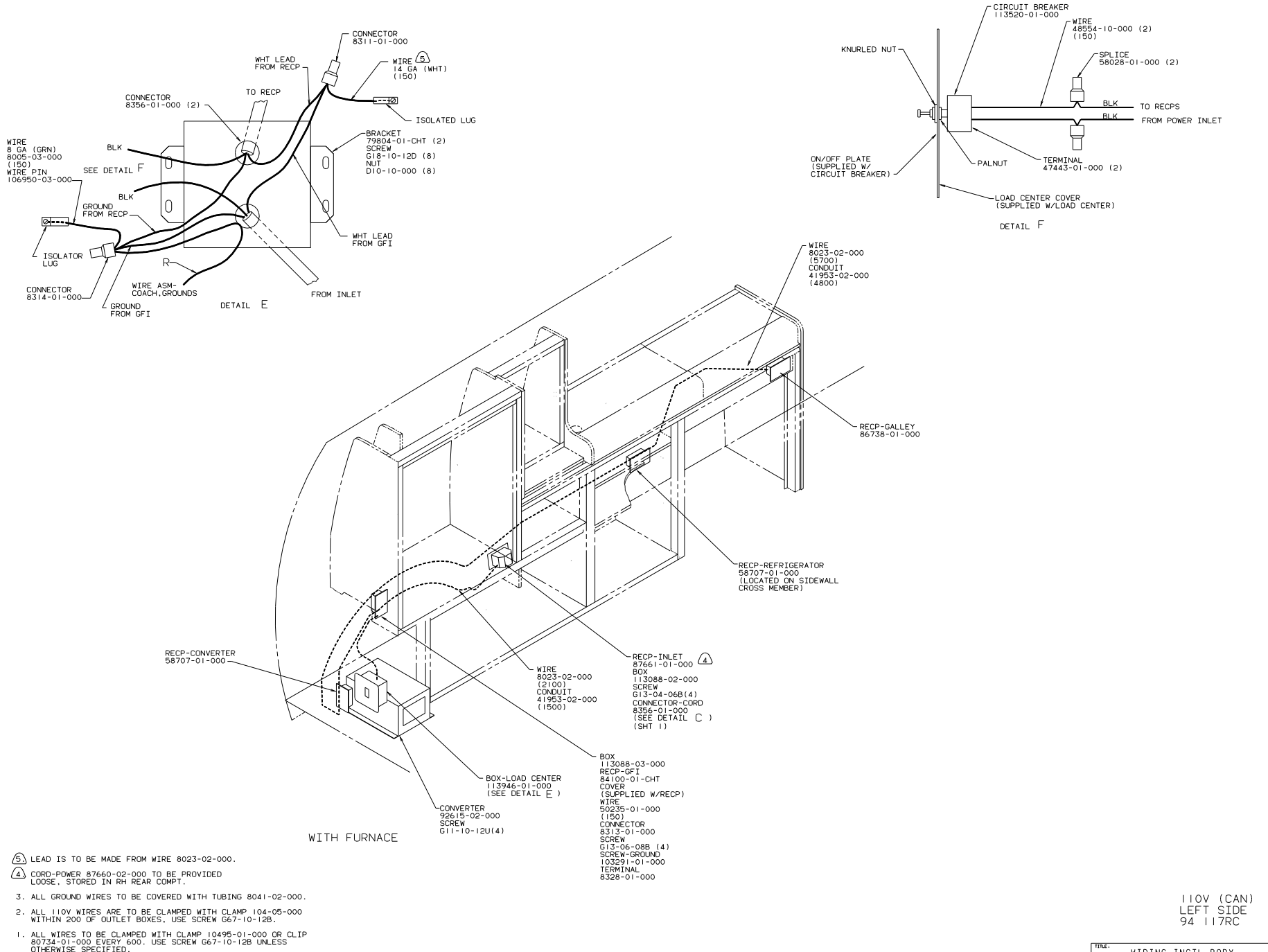


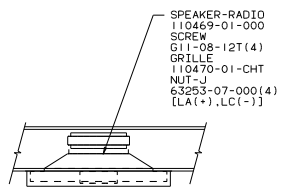
5. LEAD IS TO BE MADE FROM WIRE 8027-01-000.
4. CORD-POWER 87660-01-000 TO BE PROVIDED LOOSE, STORED IN RH REAR COMPT.
3. ALL GROUND WIRES TO BE COVERED WITH TUBING 8041-02-000.
2. ALL 110V WIRES ARE TO BE CLAMPED WITH CLAMP 104-05-000 WITHIN 200 OF OUTLET BOXES. USE SCREW G67-10-12B.
1. ALL WIRES TO BE CLAMPED WITH CLAMP 10495-01-000 OR CLIP 80734-01-000 EVERY 500. USE SCREW G67-10-12B UNLESS OTHERWISE SPECIFIED.

110V LEFT SIDE (US)

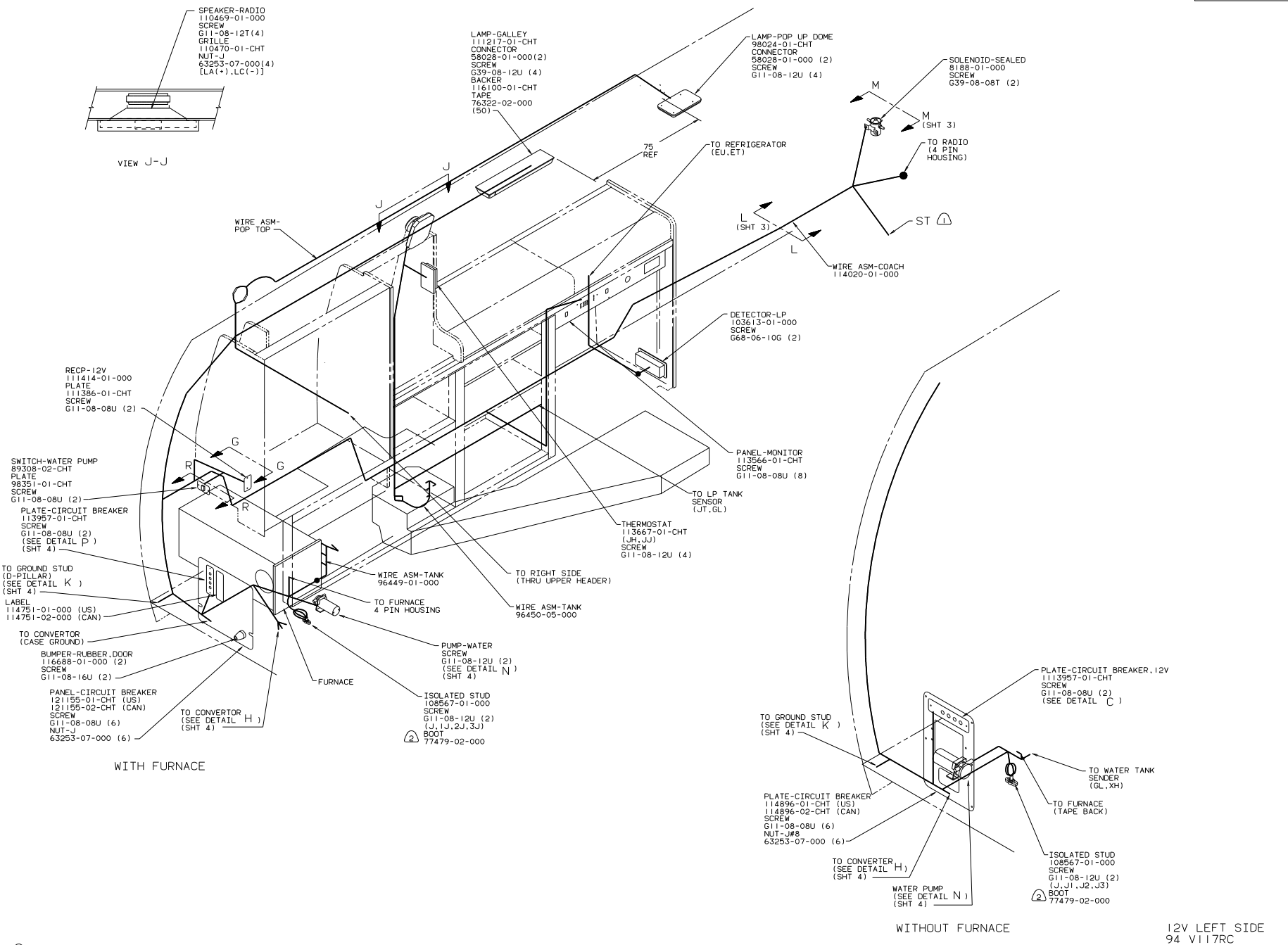
WINNEBAGO		94 V117RC
DATE	UNSPECIFIED TOLERANCES ARE:	MATERIAL:
CHKD	WHOLE DIM (IN)	
DWG	ONE-PLACE (IN, .01)	
REV	TWO-PLACE (IN, .001)	
BY	ANGLE	
APP	THIRD ANGLE PRACTICE	
DATE		
LANST	MVVAN3	TITLE: WIRING INSTL-BODY
DIA #	SCALE: NONE	DO NOT SCALE DRAWING
ALL DIMENSIONS ARE IN MILLIMETERS	SHEET 1 OF 5	DWG NO 114021



- 5) LEAD IS TO BE MADE FROM WIRE 8023-02-000.
- 4) CORD-POWER 87660-02-000 TO BE PROVIDED LOOSE, STORED IN RH REAR COMPT.
3. ALL GROUND WIRES TO BE COVERED WITH TUBING 8041-02-000.
2. ALL 110V WIRES ARE TO BE CLAMPED WITH CLAMP 104-05-000 WITHIN 200 OF OUTLET BOXES, USE SCREW G67-10-12B.
1. ALL WIRES TO BE CLAMPED WITH CLAMP 10495-01-000 OR CLIP 80734-01-000 EVERY 600. USE SCREW G67-10-12B UNLESS OTHERWISE SPECIFIED.



VIEW J-J



WITH FURNACE

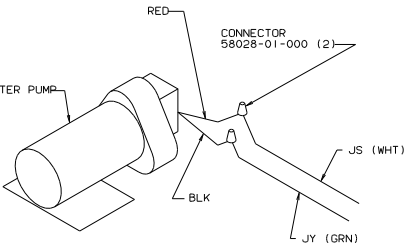
WITHOUT FURNACE

12V LEFT SIDE
94 V117RC

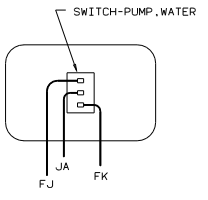
2) ALL WIRES TO PASS THRU SLEEVE IN BLOT.
1. CONNECTS TO YELLOW TERMINAL STRIP BLOCK, LOCATED BEHIND VW FUSE BLOCK ASM, FUSE S4.

NOTES:

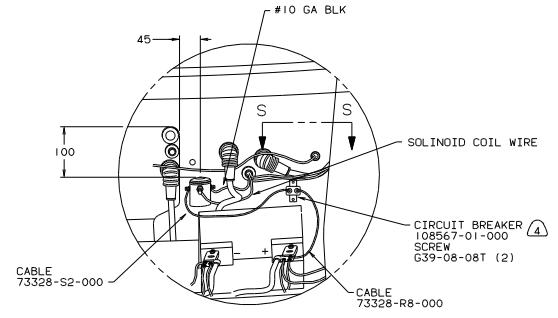
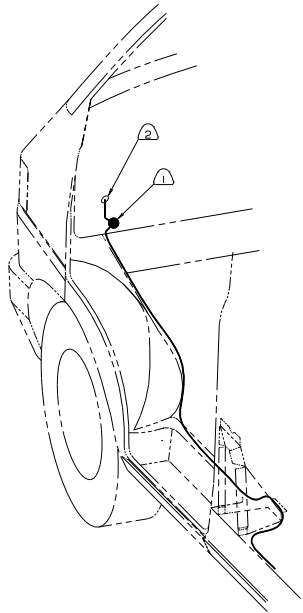
TITLE: WIRING INSTL-BODY	
30 NET SCALE DRAWING	FILE NO 114021
SHEET 3 OF 5	1 E



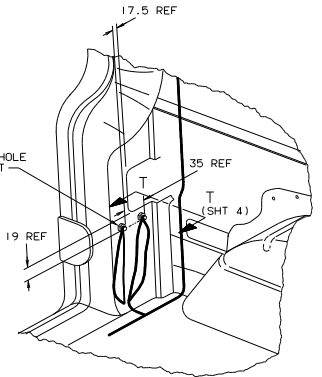
DETAIL N



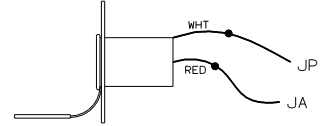
DETAIL R-R



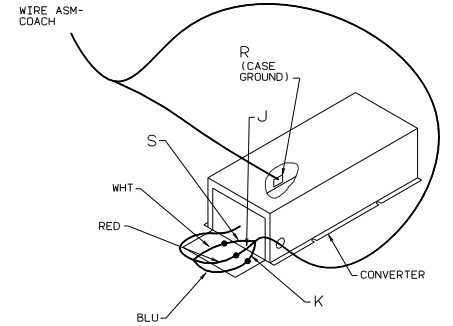
VIEW M-M



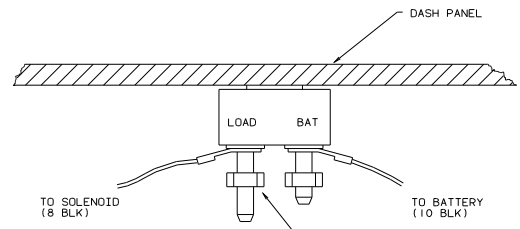
DETAIL K



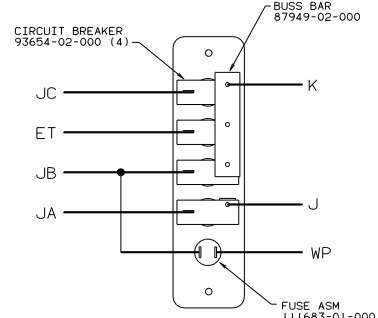
DETAIL G-G



DETAIL H



VIEW S-S

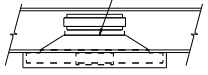


DETAIL P (BACK VIEW)

- NOTES:
- ④ LOCATION OF BATTERY LEAD ON CIRCUIT BREAKER IS CRITICAL FOR CORRECT OPERATION.
 - ③ LOCATE LABEL WITHIN 300MM OF FUSE HOLDER.
 - ② ROUTE WIRE THROUGH FIREWALL WITH EXISTING VW WIRES.
 - ① FUSE TO BE SECURED TO VW FUSE PANEL.

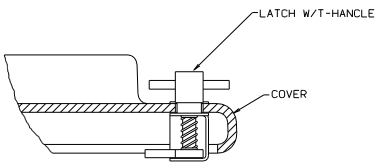
12V DETAILS
94 V117RC

- SPEAKER-RADIO 110469-01-000
- SCREW G11-08-12T(4)
- GRILLE 110470-01-CHT
- NUT-J 63253-07-000(4)
- (KX(+).LB(-))

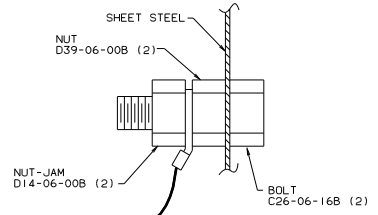


VIEW U-U

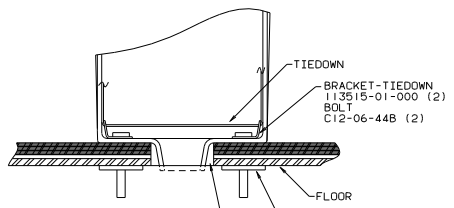
- DETECTOR-C02 112320-01-000
- SCREW G11-08-12U (4)



DETAIL X-X



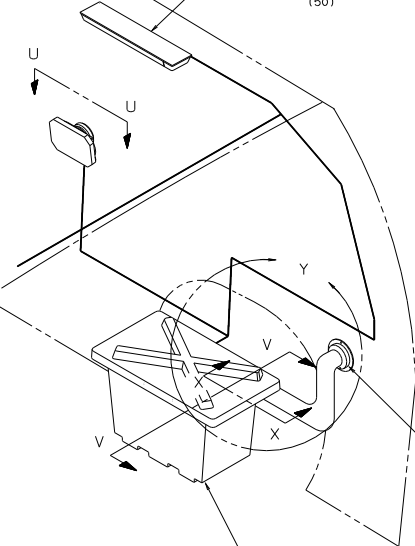
VIEW T-T



DETAIL V-V

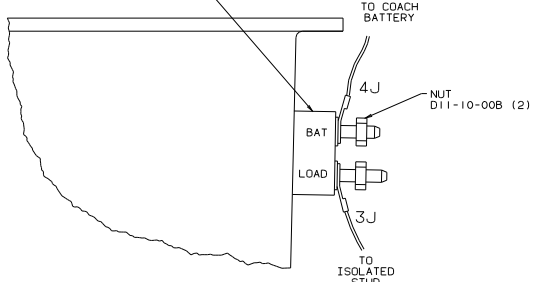
- WASHER E13-18-00B (2)
- NUT D39-06-00B (2)

- LAMP-REAR 111217-01-CHT
- CONNECTOR 58028-01-000(2)
- SCREW G39-08-12U(4)
- BACKER 116100-01-CHT
- TAPE 76322-02-000 (50)



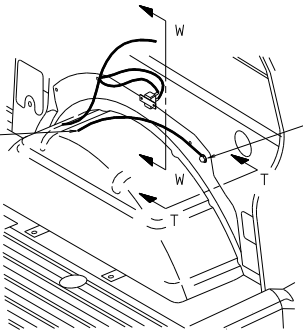
- VENT-SIDEWALL 89048-01-CHT
- HOSE 1114667-01-000(760)
- CLAMP 62401-02-000(2)
- SCREW G39-10-10T(2)

- CIRCUIT BREAKER 108567-01-000
- RIVET H15-06-10R (2)
- BOOT 77479-02-000



VIEW W-W

- TO NEG. POST ON BATTERY
- BOLT C12-06-20B
- NUT D14-06-00B (2)
- GROUND STUD
- OPEN HOLE TO 3/8
- GRIND PAINT



DETAIL Y

- BATTERY 63739-02-000
- TIEDOWN 84993-01-000
- COVER-BATTERY BOX 113514-01-CHT
- BOX-BATTERY, SINGLE 111394-01-CHT
- LATCH-GRIP, ADJUSTABLE 113517-01-000
- RIVET H15-06-06R(2)
- SEAL 64075-07-000 (1335)

- 2 BOTH WIRES TO PASS THRU SLEEVE IN BOOT.
- 1 LOCATION OF COACH BATTERY CIRCUIT BREAKER IS CRITICAL FOR CORRECT OPERATION.

NOTES:

12V RIGHT SIDE

94 V117RC

TITLE: WIRING INSTL-BODY	
30 NET SCALE DRAWING	FILE NO 114021
SHEET 5 OF 5	1 E