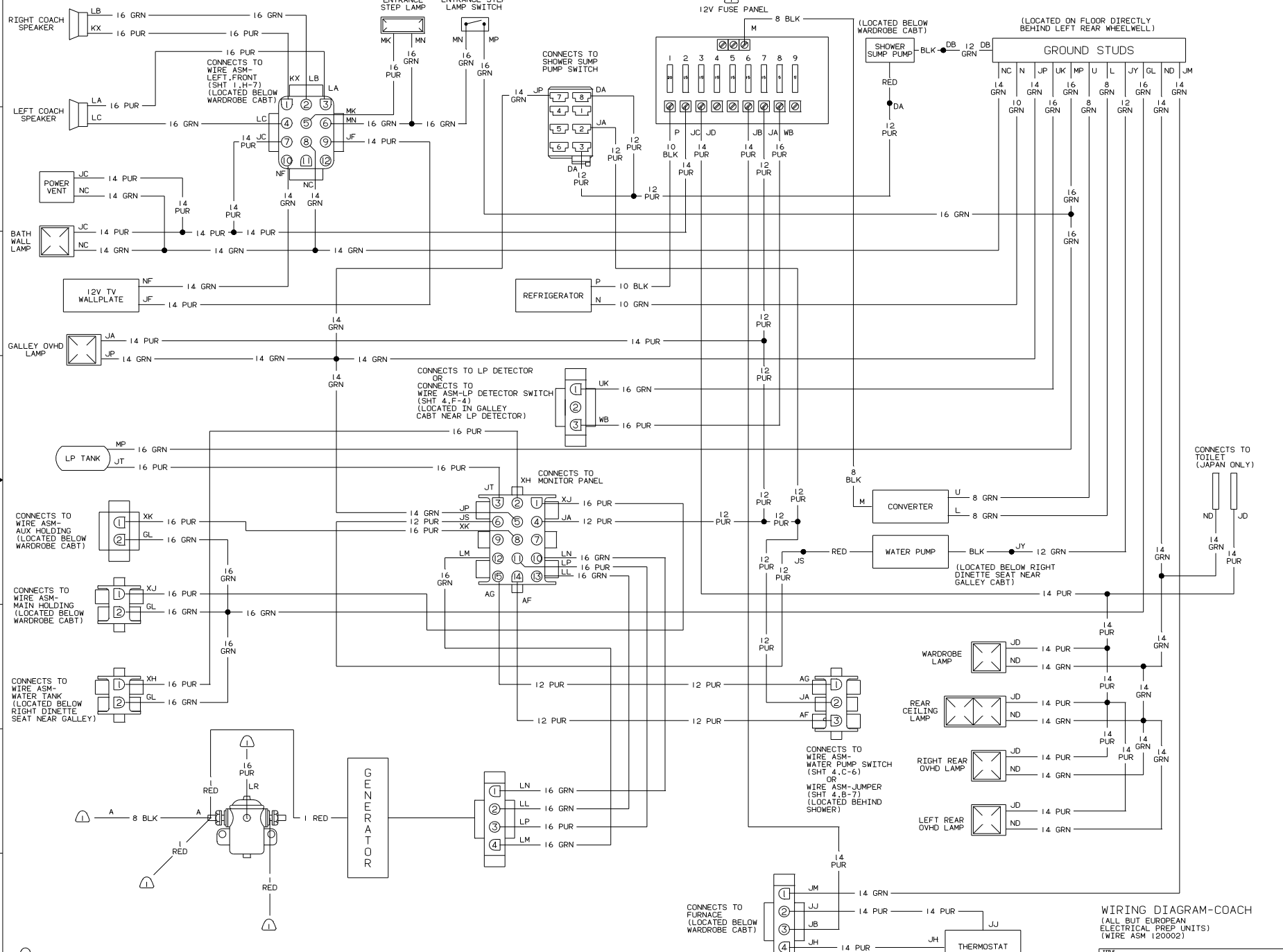


(3) SEE SHT 3, H-4 FOR TERMINATION WITH EUROPEAN ELECTRICAL PREP.
 (2) SEE WIRING DIAGRAM-AUTO LAMPS FOR ADDITIONAL INFORMATION.
 (1) SEE SHT 2 OR 3 FOR ADDITIONAL INFORMATION.
 (4) SEE MANUFACTURER'S DIAGRAM FOR ADDITIONAL INFORMATION.
 (5) SUPPLIED WITH CHASSIS.

WIRING DIAGRAM-LEFT FRONT (WIRE ASM 119966)

WINNEBAGO 96 221RD	
OPTD	UNSPECIFIED TOLERANCES ARE MATERIAL
CHRP	MADE ON 1X1
FR	ONE-PLATE 1X 31
PL	NO-PLATE 1X 301
PL	ANGLE
CONR	TRUSS ANGLE PRODUCTION

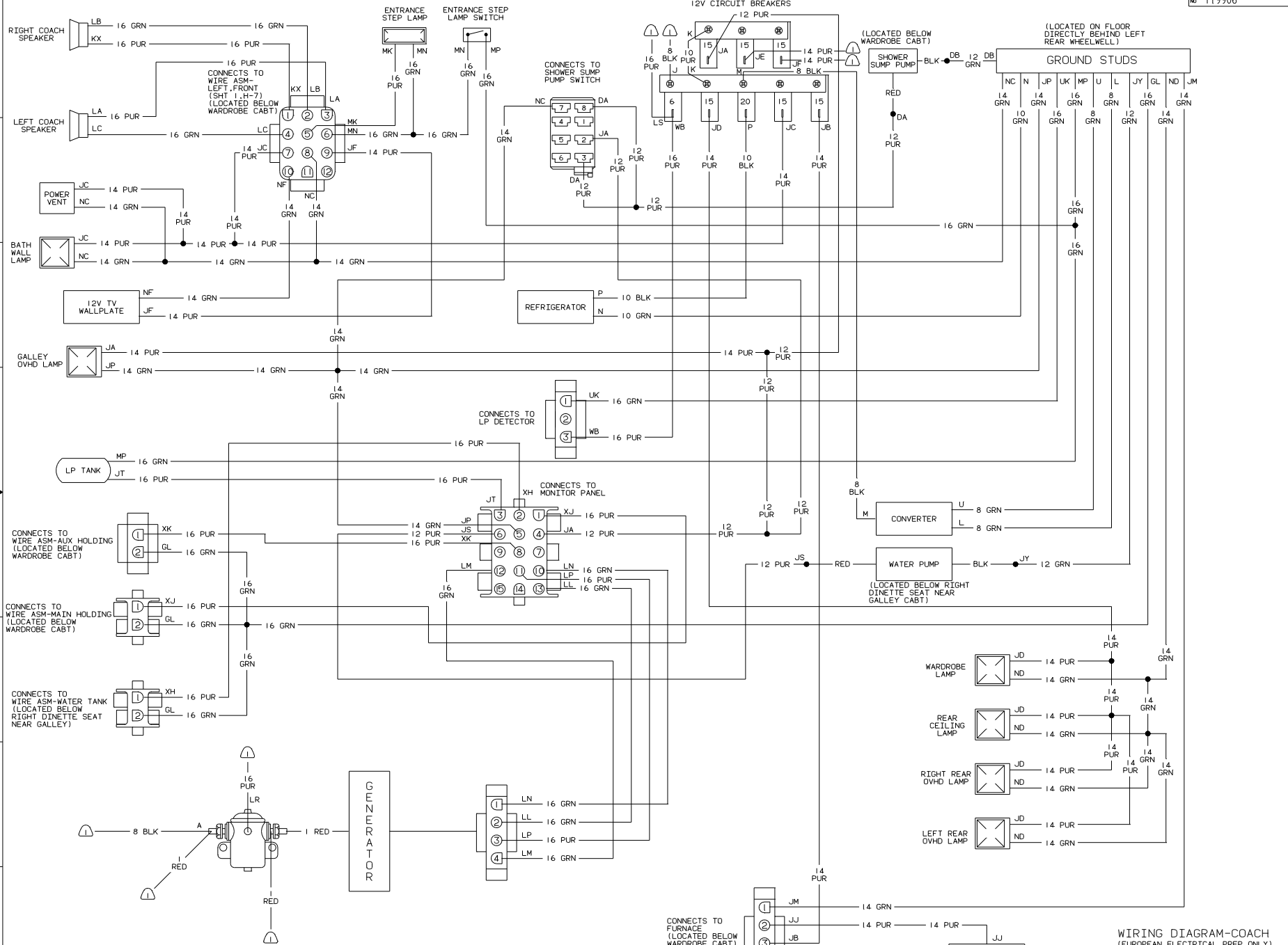
DRAWING NO. _____ TITLE: **WIRING DIAGRAM-BODY**
 100 NET SCALE DRAWING SIZE: 11.0 x 16.0
 ALL DIMENSIONS ARE IN MILLIMETERS SHEET 1 OF 6 119906



NOTES:
 1. SEE SHT 1 FOR ADDITIONAL INFORMATION.

WIRING DIAGRAM-COACH
 (ALL BUT EUROPEAN ELECTRICAL PREP UNITS)
 (WIRE ASM 120002)

TITLE:	WIRING DIAGRAM-BODY
30 NET SCALE DRAWING	1 of 1
SHEET	2 of 6
REV	1 E
NO	119906

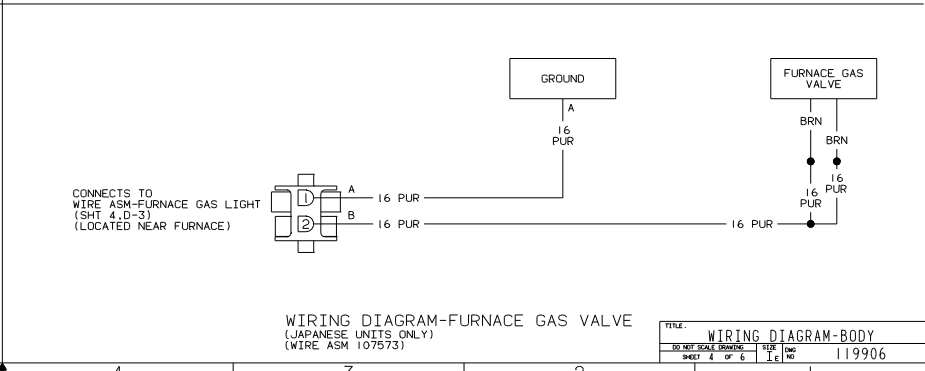
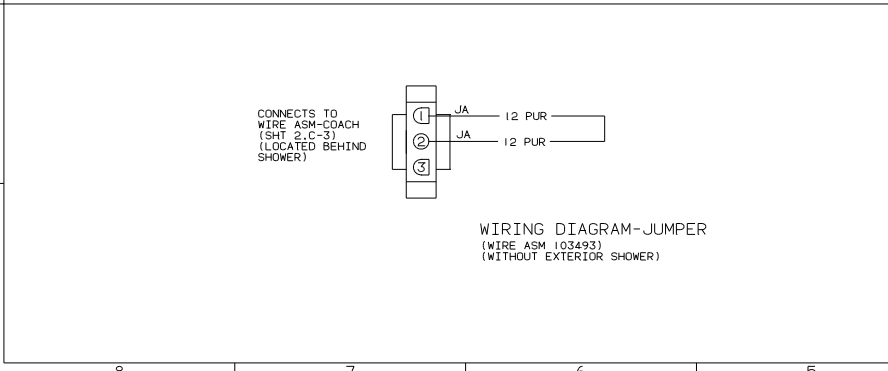
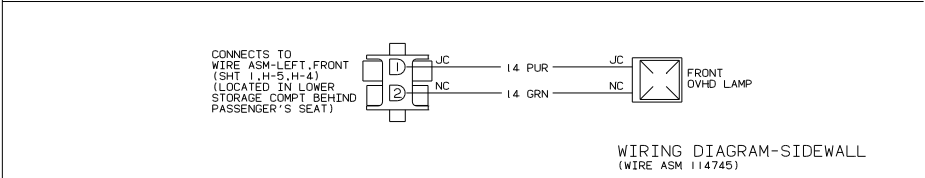
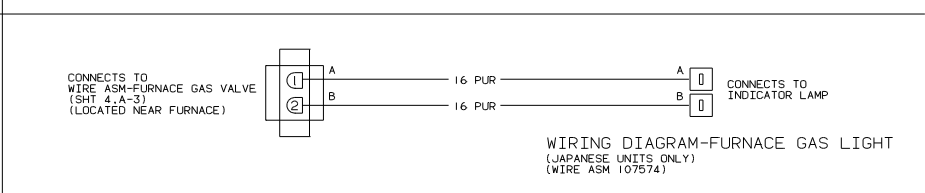
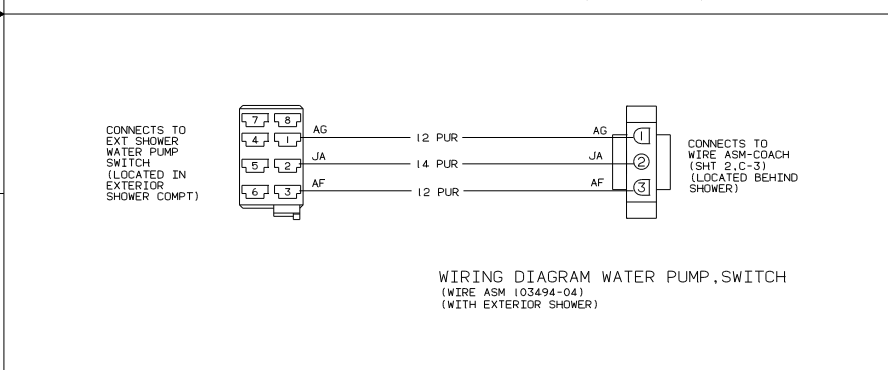
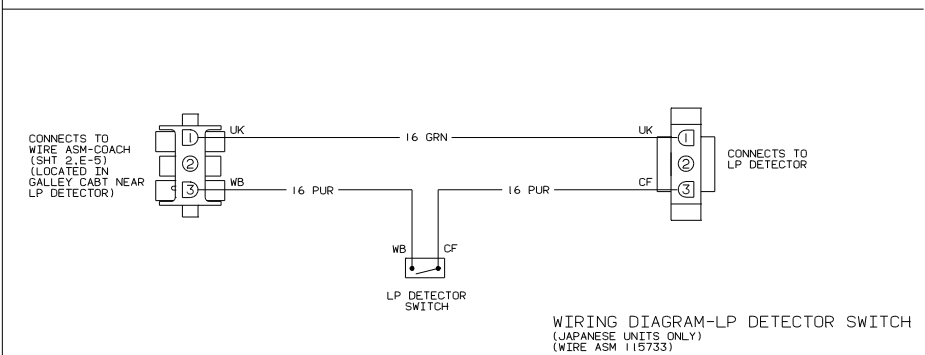
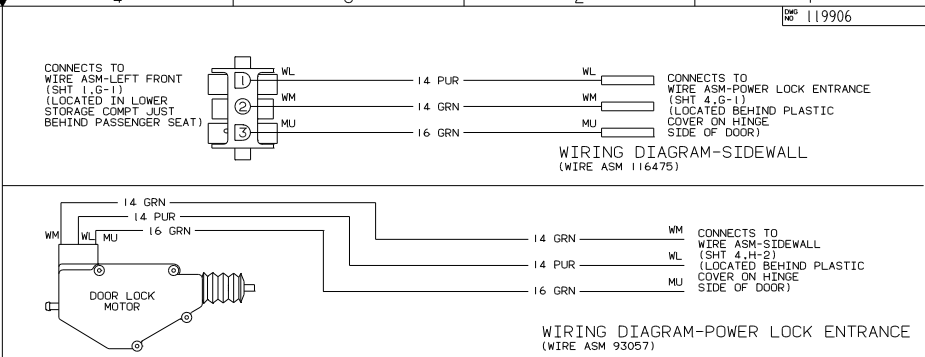
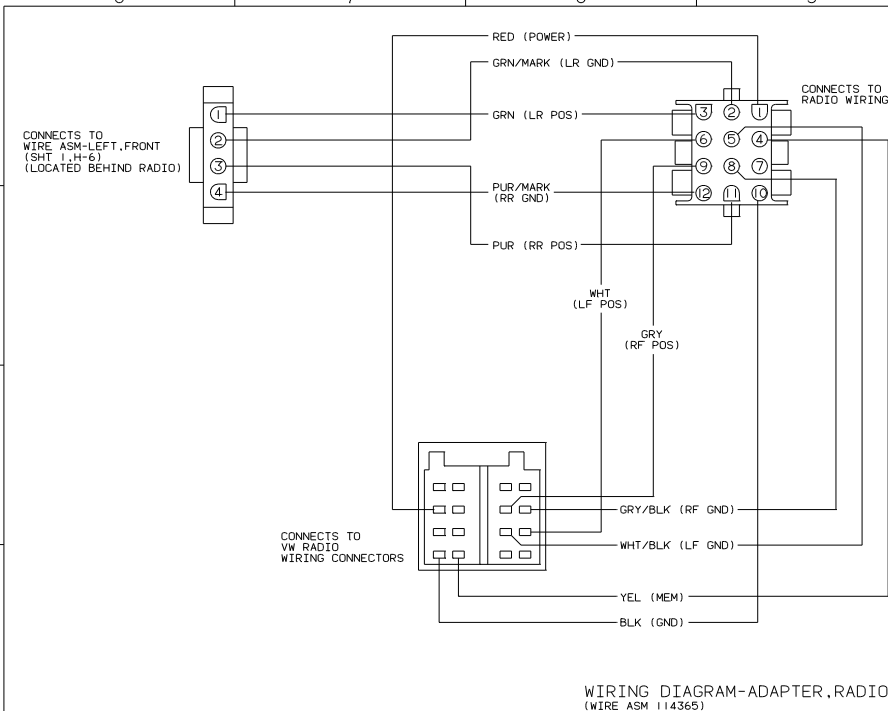


SEE SHIT I FOR ADDITIONAL INFORMATION.

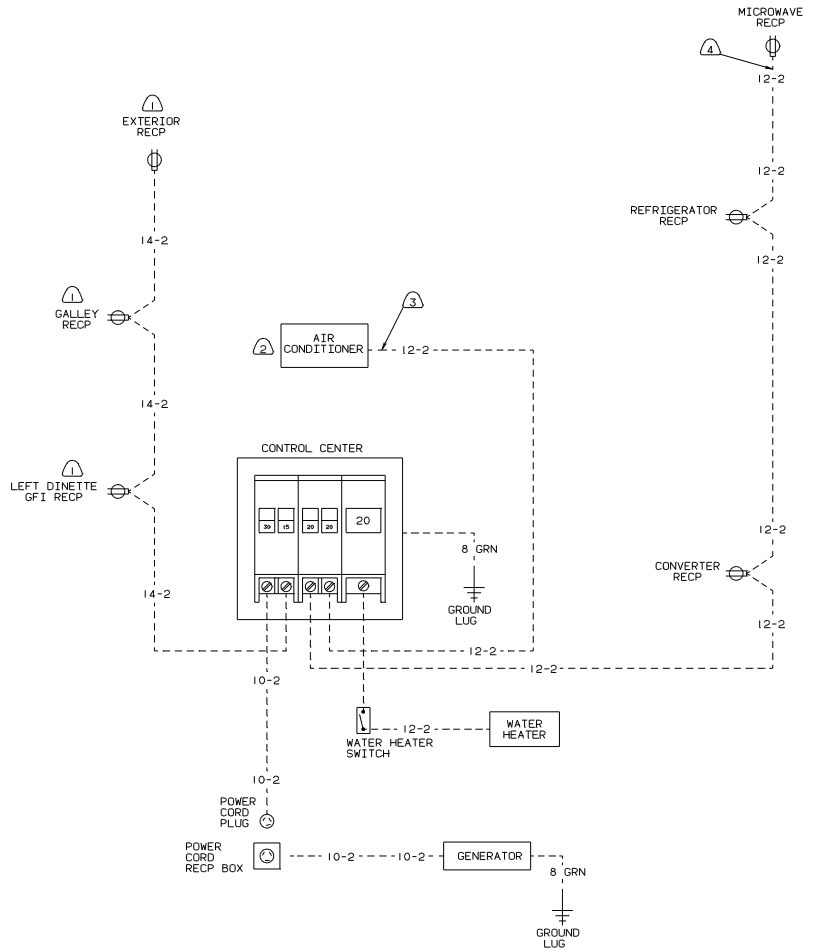
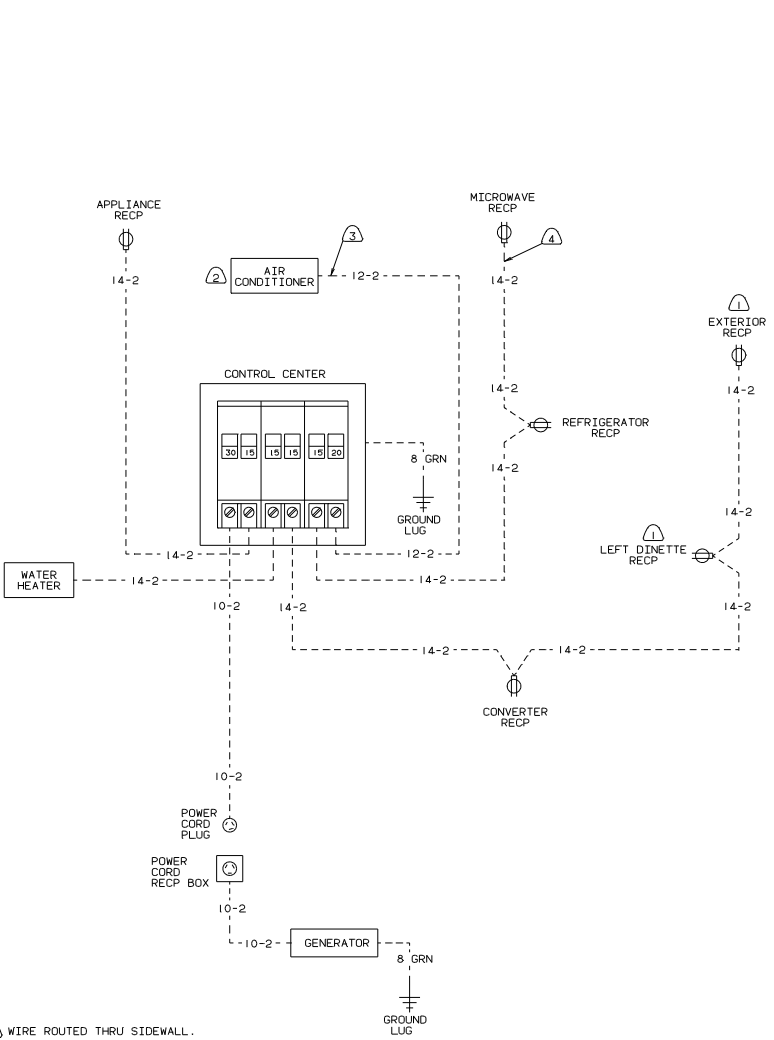
NOTES:

WIRING DIAGRAM-COACH
(EUROPEAN ELECTRICAL PREP ONLY)
(WIRE ASM 120021)

TITLE:	WIRING DIAGRAM-BODY
30 NET SCALE DRAWING	FIG 1 E
SHEET 3 OF 6	119906



TITLE		WIRING DIAGRAM-BODY	
30 NET SCALE Drawing	SHEET	4	of 6
Doc No	1E	119906	



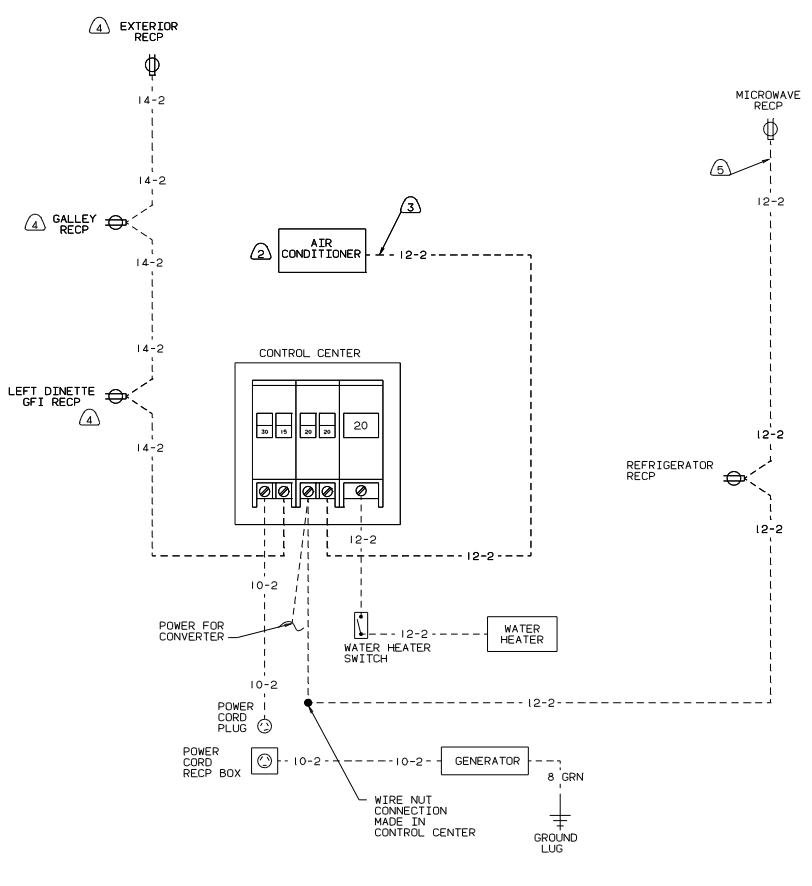
- ④ WIRE ROUTED THRU SIDEWALL.
- ③ WIRE ROUTED THRU ROOF.
- ② WITH AIR CONDITIONER.
- ① PROTECTED BY GFI RECP.

(CAN 110V WIRING)

(US 110V WIRING)

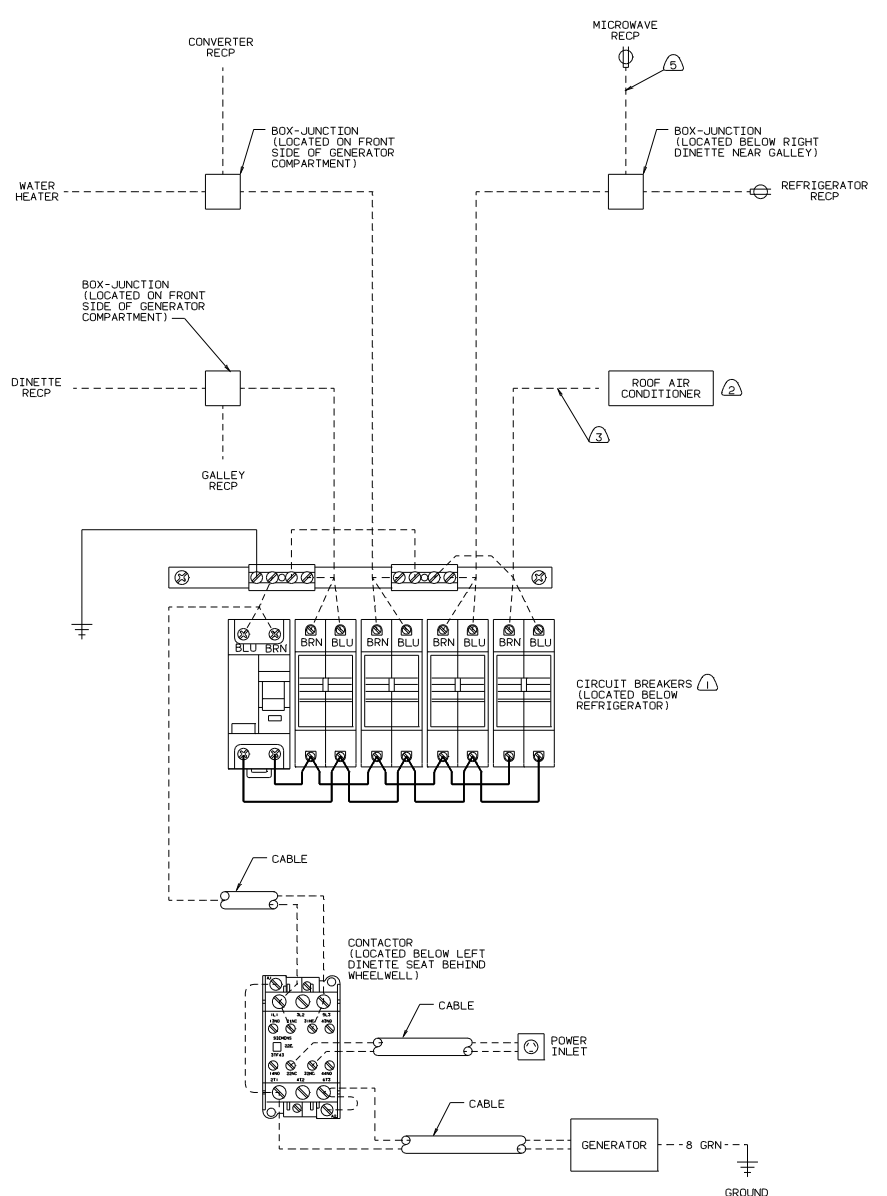
94 H-SERIES

TITLE: WIRING DIAGRAM-BODY	
30 MET SCALE DRAWING	119906
SHEET 5 OF 6	1 E



- ⑤ WIRE ROUTED THRU SIDEWALL.
- ④ PROTECTED BY GFI RECP.
- ③ WIRE ROUTED THRU ROOF.
- ② WITH AIR CONDITIONER.
- ① ALL CIRCUITS PROTECTED BY GFI MAIN BREAKER.

(JAPANESE 110V WIRING)



(220 VOLT WIRING)
(EUROPEAN ELECTRICAL PREP UNITS)

TITLE: WIRING DIAGRAM-BODY	
30 NET SCALE DRAWING	1/16" = 1"
SHEET 6 OF 6	119906