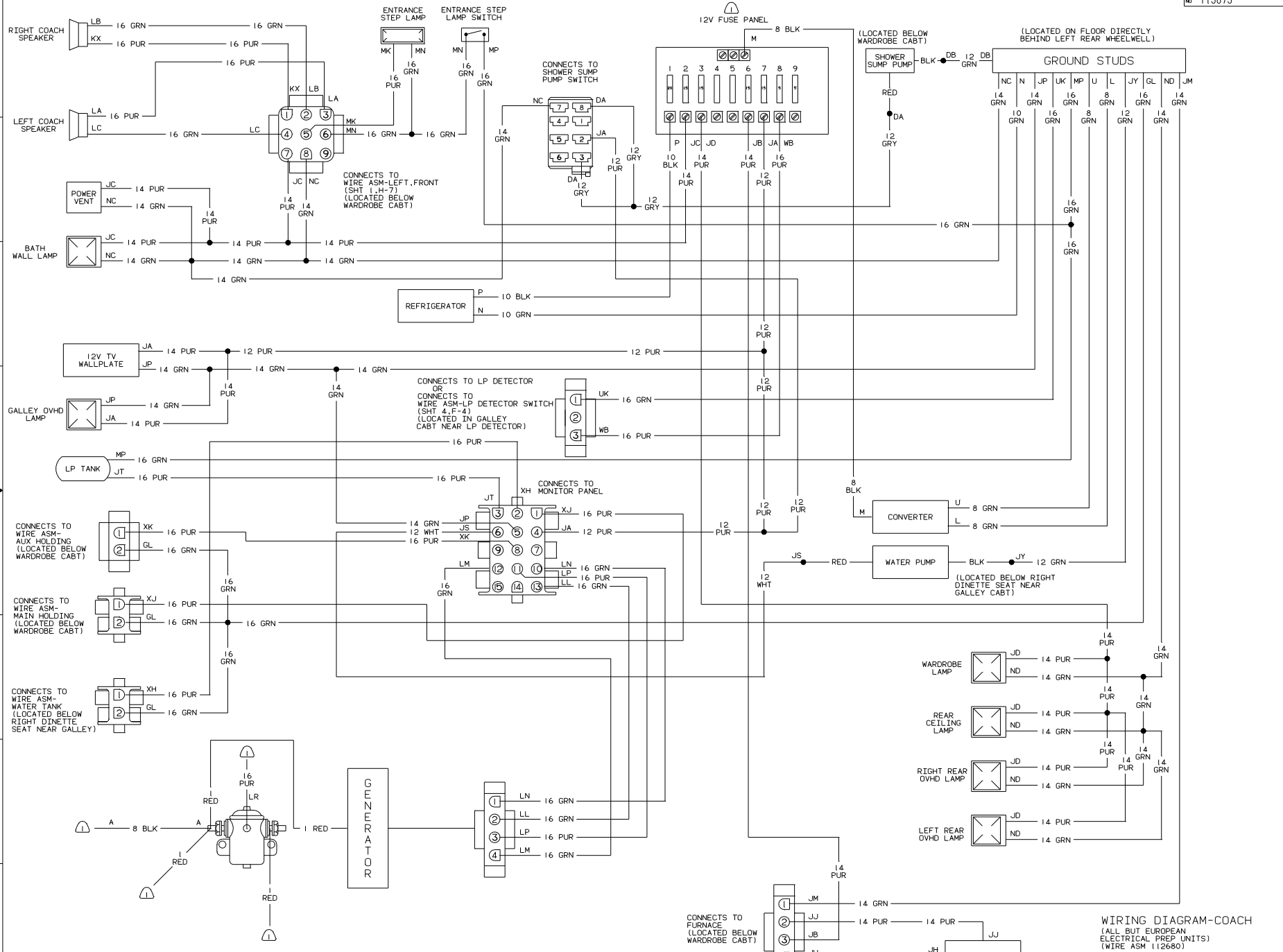


WIRING DIAGRAM-LEFT FRONT  
 (WIRE ASM 112676)

NOTES:  
 ① SEE SHT 2 OR 3 FOR ADDITIONAL INFORMATION.  
 ② SEE WIRING DIAGRAM-AUTO LAMPS FOR ADDITIONAL INFORMATION.  
 ③ SEE SHT 3, H-4 FOR TERMINATION WITH EUROPEAN ELECTRICAL PREP.  
 ④ SEE MANUFACTURER'S DIAGRAM FOR ADDITIONAL INFORMATION.  
 ⑤ SUPPLIED WITH CHASSIS.

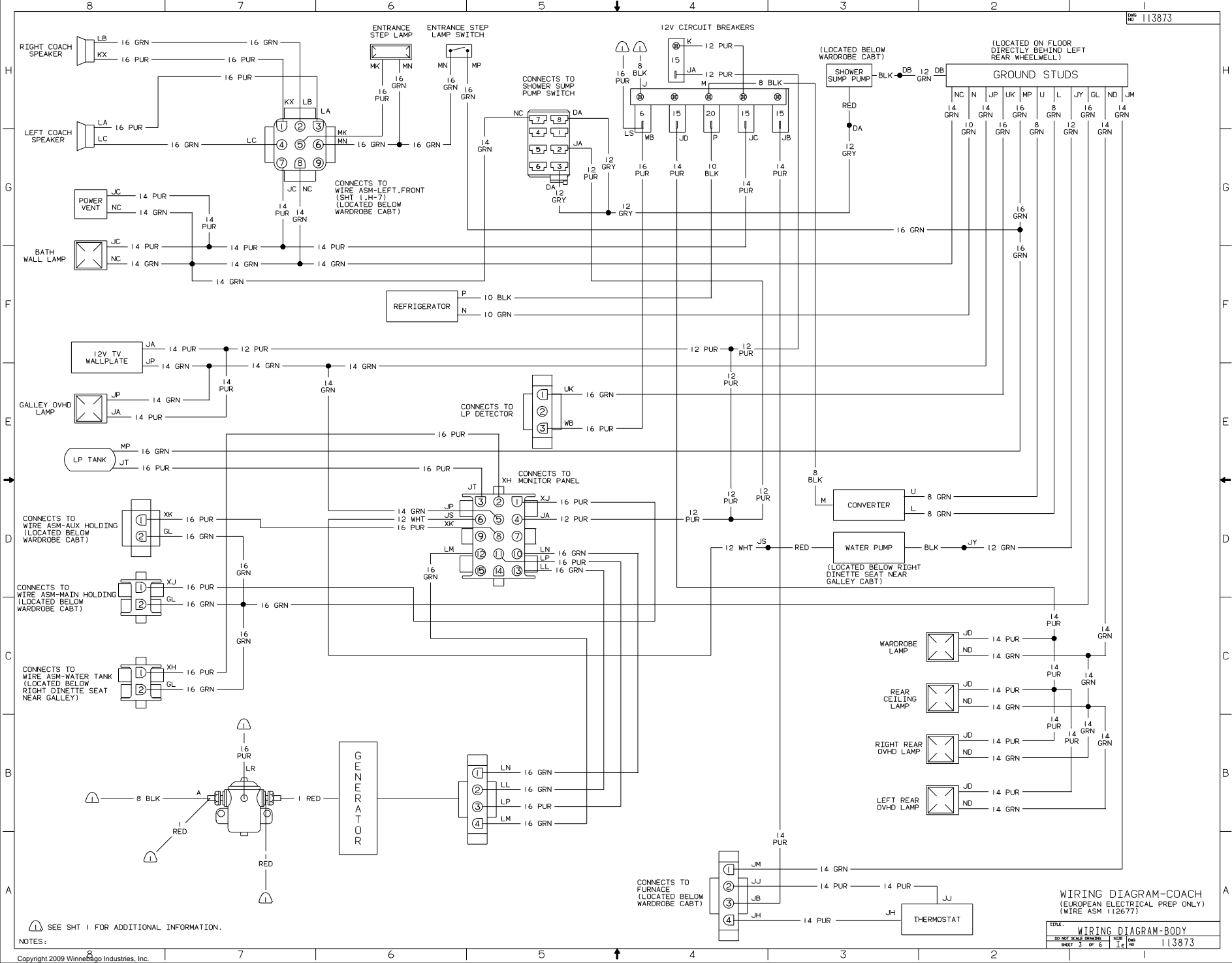
WINNEBAGO		94 H-SERIES
DATE	UNSPECIFIED TOLERANCES ARE	MATERIAL
DRW	ASSEMBLED TO	
REV	ONE-PLACE (X 3)	
FILE	ONE-PLACE (X 30)	
FILE	ANGLE	
CONF	TRUSS W/ANGLE PROTECTION	
LAYOUT NO. _____ TITLE: <b>WIRING DIAGRAM-BODY</b>		
DATE	SCALE	NO. OF SHEETS
11/87	1:1	6
ALL DIMENSIONS ARE IN MILLIMETERS		



NOTES: SEE SHIT 1 FOR ADDITIONAL INFORMATION.

WIRING DIAGRAM-COACH  
(ALL BUT EUROPEAN ELECTRICAL PREP UNITS)  
(WIRE ASM 112680)

TITLE:	WIRING DIAGRAM-BODY
30 NET SCALE DRAWING	1 of 1
SHEET	2 of 6
DATE	113873



(LOCATED ON FLOOR DIRECTLY BEHIND LEFT REAR WHEELWELL)

GROUND STUDS

(LOCATED BELOW WARDROBE CABT)

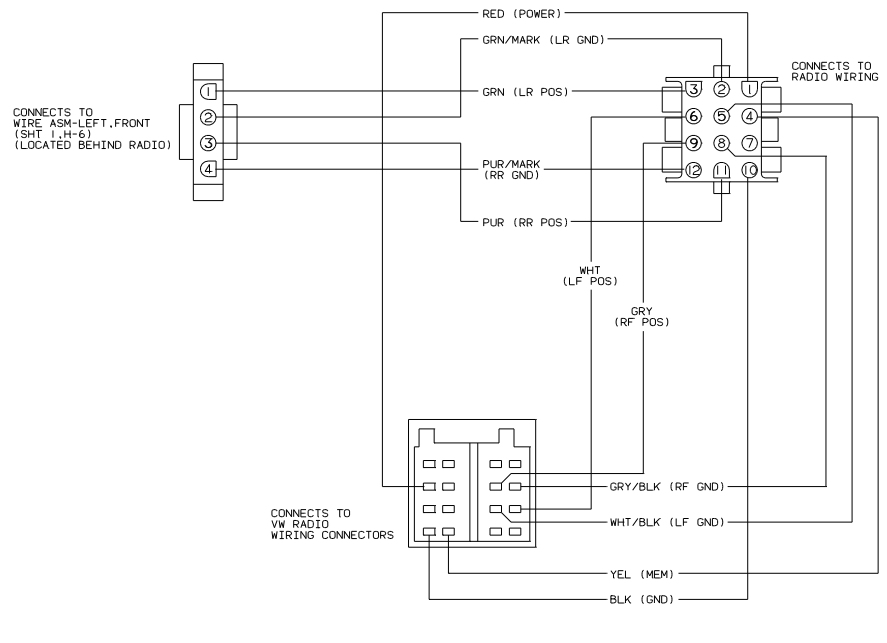
CONNECTS TO FURNACE (LOCATED BELOW WARDROBE CABT)

WIRING DIAGRAM-COACH  
(EUROPEAN ELECTRICAL PREP ONLY)  
(WIRE ASM 1126777)

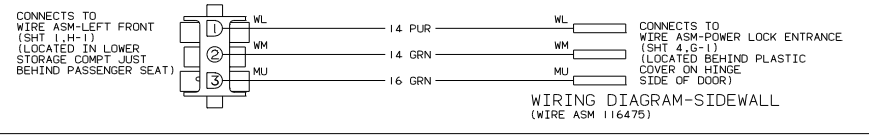
TITLE:		WIRING DIAGRAM-BODY	
30 MM SCALE DRAWING	SHEET	1	6
DRAWN BY		J.E.	
DATE		113873	

SEE SHT 1 FOR ADDITIONAL INFORMATION.

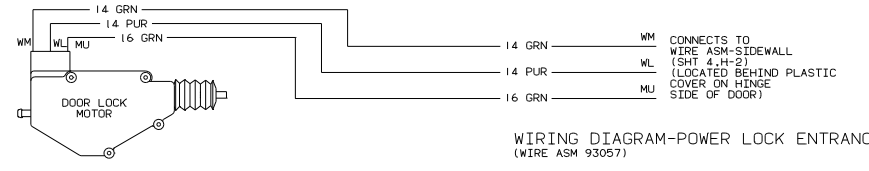
NOTES:



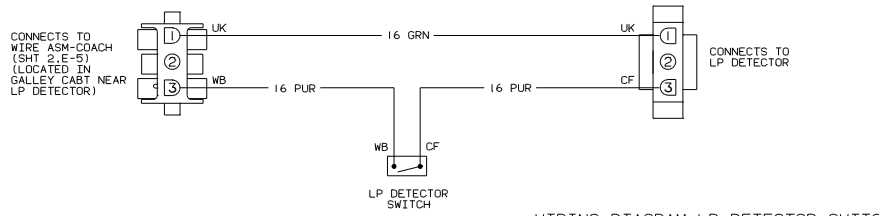
WIRING DIAGRAM-ADAPTER,RADIO (WIRE ASM 114365)



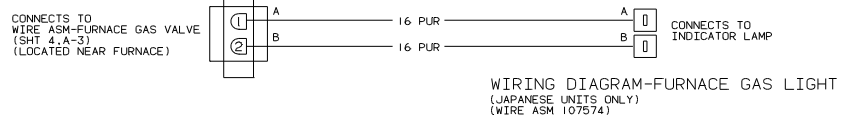
WIRING DIAGRAM-SIDEWALL (WIRE ASM 116475)



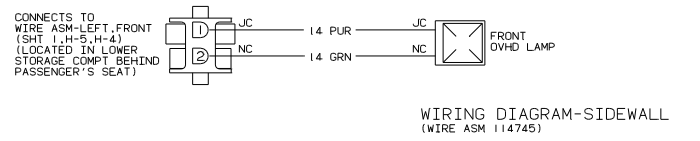
WIRING DIAGRAM-POWER LOCK ENTRANCE (WIRE ASM 93057)



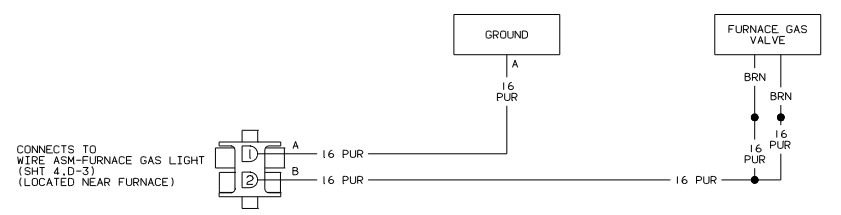
WIRING DIAGRAM-LP DETECTOR SWITCH (JAPANESE UNITS ONLY) (WIRE ASM 115733)



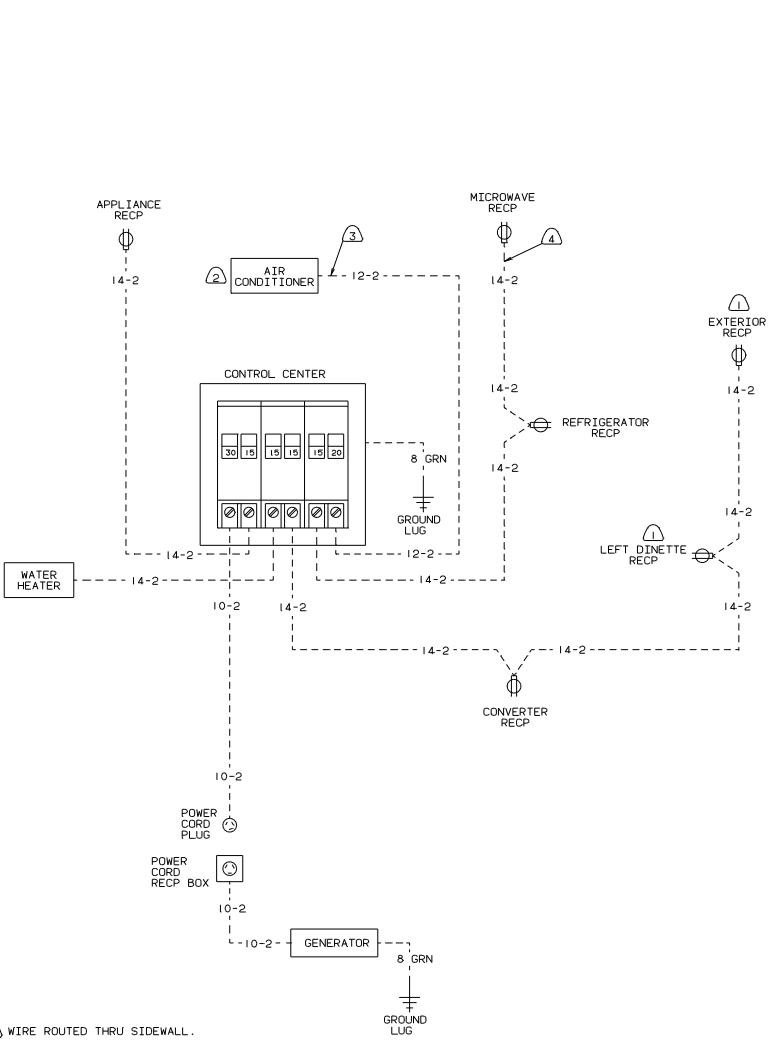
WIRING DIAGRAM-FURNACE GAS LIGHT (JAPANESE UNITS ONLY) (WIRE ASM 107574)



WIRING DIAGRAM-SIDEWALL (WIRE ASM 114745)

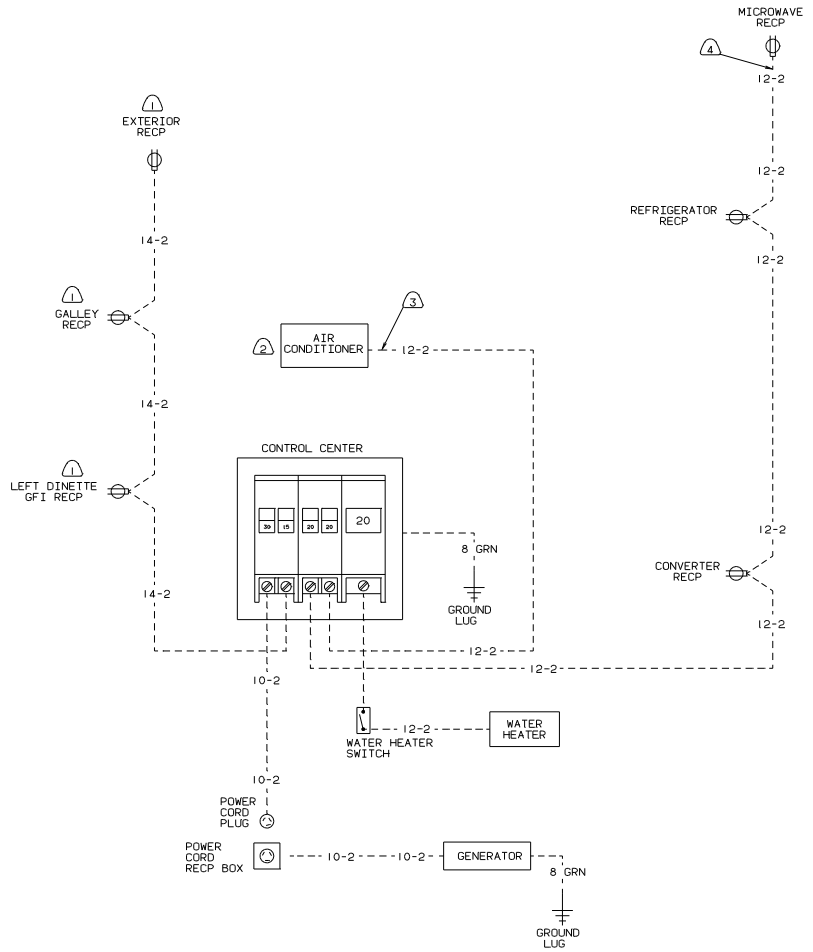


WIRING DIAGRAM-FURNACE GAS VALVE (JAPANESE UNITS ONLY) (WIRE ASM 107573)



- ④ WIRE ROUTED THRU SIDEWALL.
- ③ WIRE ROUTED THRU ROOF.
- ② WITH AIR CONDITIONER.
- ① PROTECTED BY GFI RECP.

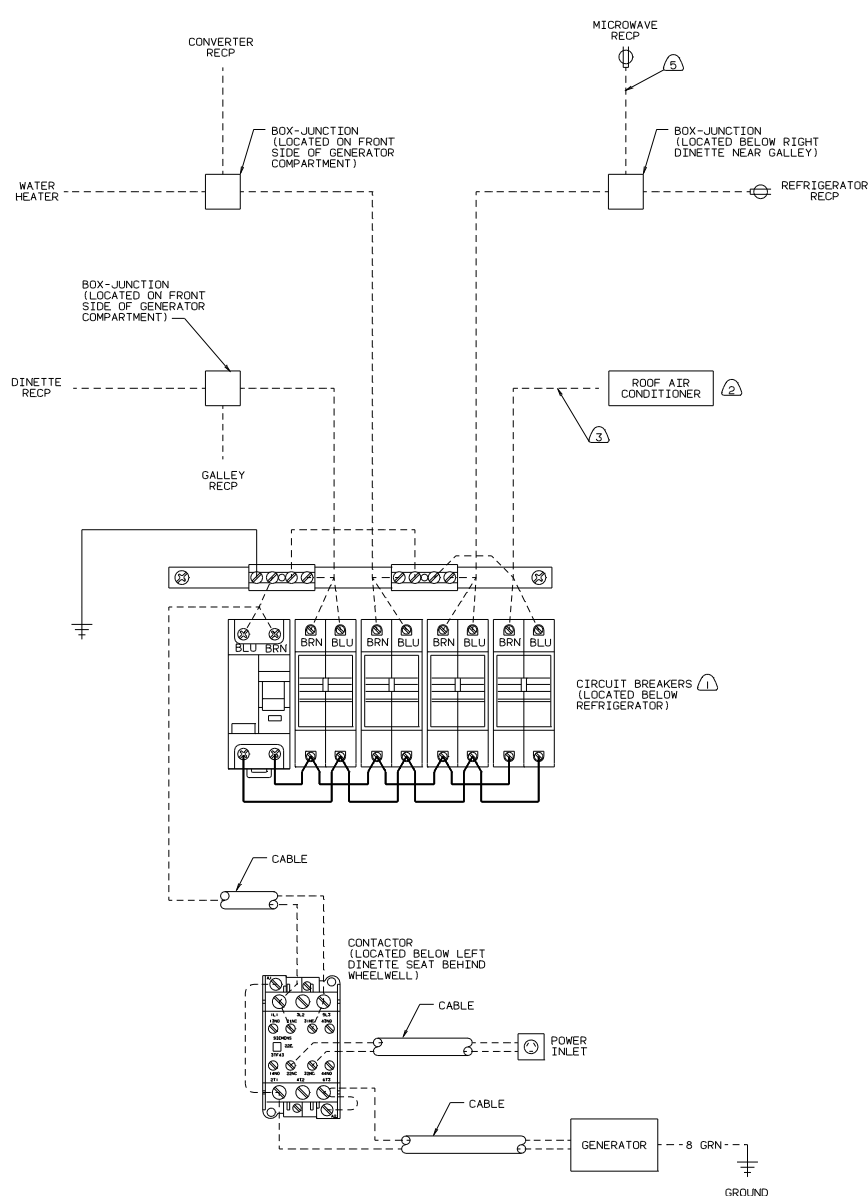
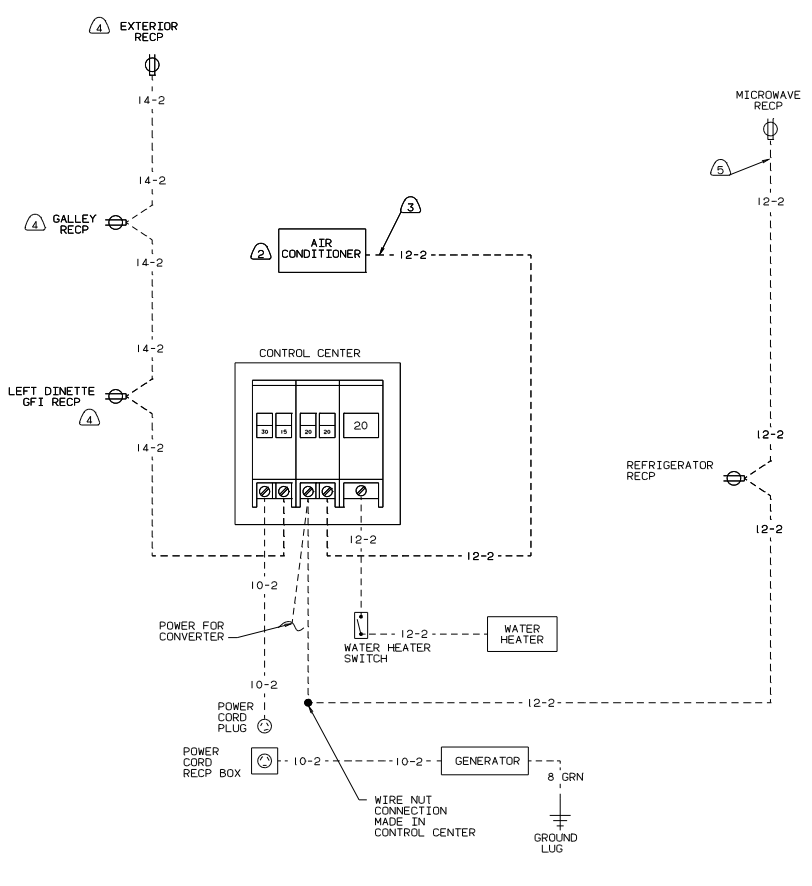
(CAN 110V WIRING)



(US 110V WIRING)

94 H-SERIES

TITLE: WIRING DIAGRAM-BODY	
30 MET SCALE DRAWING	FILE NO
SHEET 5 OF 6	113873



- ⑤ WIRE ROUTED THRU SIDEWALL.
- ④ PROTECTED BY GFI RECP.
- ③ WIRE ROUTED THRU ROOF.
- ② WITH AIR CONDITIONER.
- ① ALL CIRCUITS PROTECTED BY GFI MAIN BREAKER.

(JAPANESE 110V WIRING)

(220 VOLT WIRING)  
(EUROPEAN ELECTRICAL PREP UNITS)

TITLE: WIRING DIAGRAM-BODY	
30 MET SCALE DRAWING	FILE NO
SHEET 6 OF 6	113873