



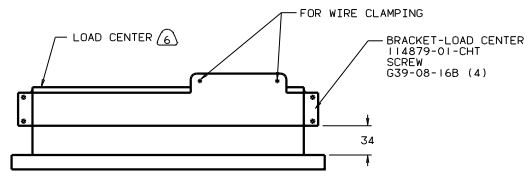
DANGER

Danger of electrical shock, burns or death. Always remove all power sources before attempting any repair, service or diagnostic work. Power can be present from shore power, generator, inverter or battery. All power sources must be disabled and secured before performing any service.

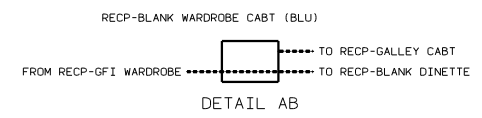
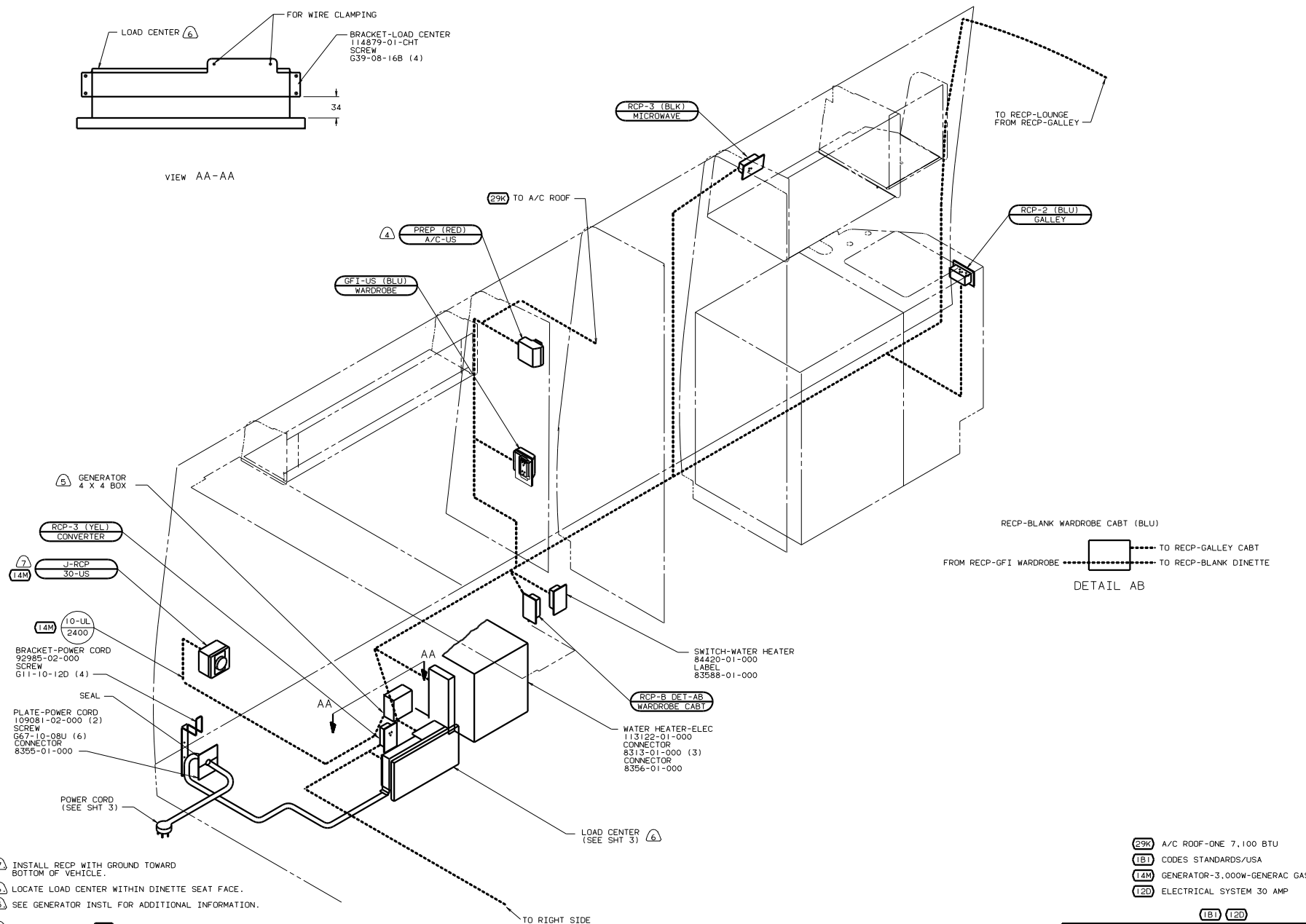


CAUTION

If you lack the skills, tools or equipment to perform diagnostic or repair work leave such work to an authorized Winnebago Industries dealer or other qualified shop.



VIEW AA-AA



- BRACKET-POWER CORD
92985-02-000
SCREW
G11-10-12D (4)
- SEAL
- PLATE-POWER CORD
109081-02-000 (2)
SCREW
G67-10-08U (6)
CONNECTOR
8355-01-000

- SWITCH-WATER HEATER
84420-01-000
LABEL
83588-01-000
- WATER HEATER-ELEC
CONNECTOR
8313-01-000 (3)
CONNECTOR
8356-01-000

- (7) INSTALL RECP WITH GROUND TOWARD BOTTOM OF VEHICLE.
- (6) LOCATE LOAD CENTER WITHIN DINETTE SEAT FACE.
- (5) SEE GENERATOR INSTL FOR ADDITIONAL INFORMATION.
- (4) NOT USED WITH (29K)
- 3. ALL GROUND WIRES TO BE COVERED WITH TUBING 8041-02-000.
- 2. ALL WIRES ARE TO BE CLAMPED WITH CLAMP 10497-05-000 WITHIN 200 OF OUTLET BOXES. USE SCREW G67-10-12B.
- 1. ALL WIRES TO BE CLAMPED WITH CLAMP 10495-01-000 OR CLIP 80734-01-000 EVERY 600. USE SCREW G67-10-12B UNLESS OTHERWISE SPECIFIED.

- (29K) A/C ROOF-ONE 7.100 BTU
- (1B1) CODES STANDARDS/USA
- (14M) GENERATOR-3.000W-GENERAC GAS
- (12D) ELECTRICAL SYSTEM 30 AMP

FOR ELECTRICAL SPECIFICATIONS SEE DWG NO. 128783-01-000

(X-X) FOR ELECTRICAL CALLOUTS SEE DWG NO. 121339-01-000

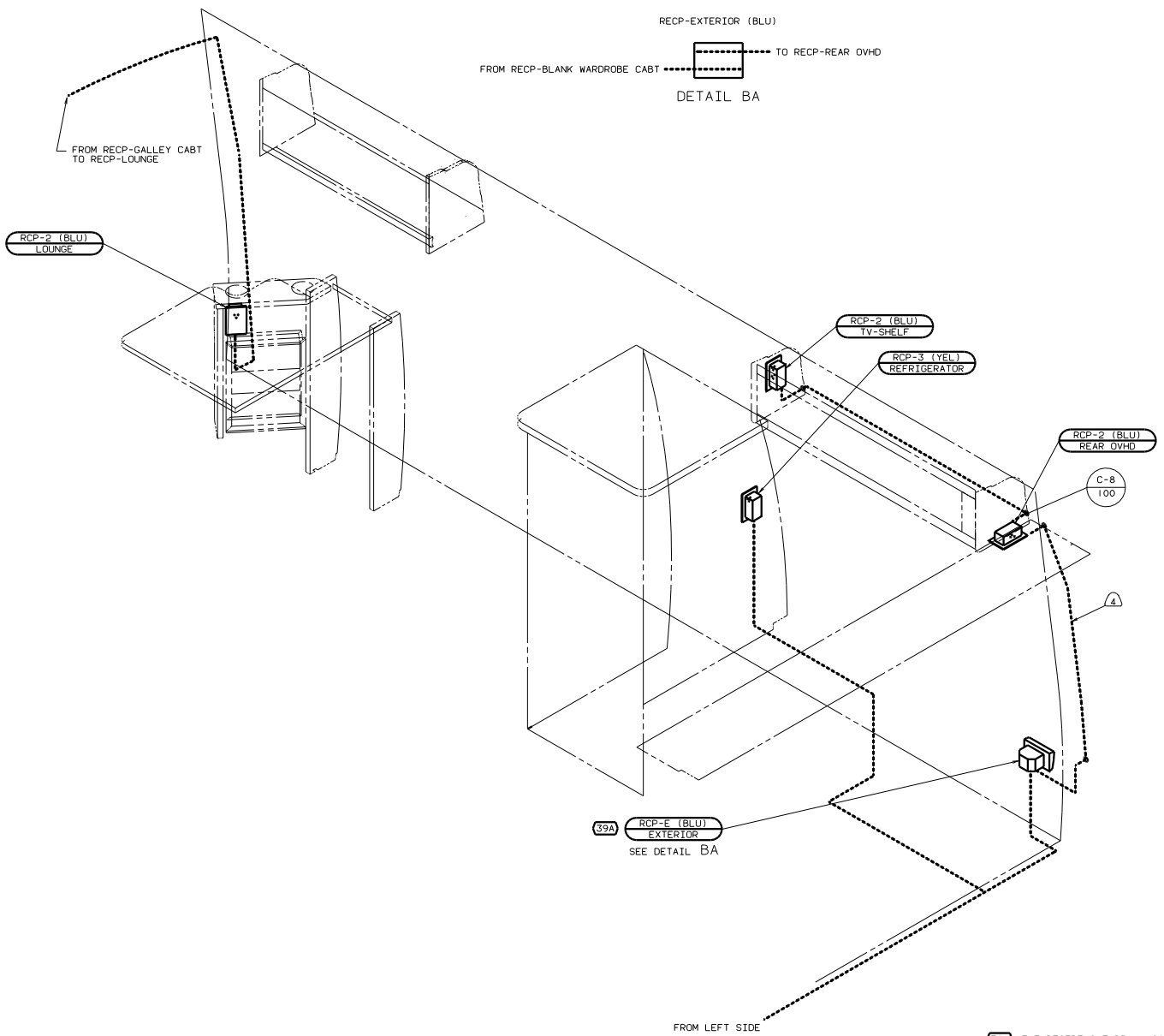
WINNEBAGO 00 222HD

DATE	UNSPECIFIED TOLERANCES ARE:	MATERIAL
DATE	WHOLE DIM (1)	
DATE	ONE-PLACE (1X.01)	
DATE	TWO-PLACE (1X.001)	
DATE	ANGLE	
DATE	INDIC. WHOLE DIMENSIONS	

WIRING INSTL - BODY 110V (130US)

SHEET 1 OF 7

REF: 131115-L 1



- △ ROUTE WIRE THRU SIDEWALL.
- ALL GROUND WIRES TO BE COVERED WITH TUBING 8041-02-000.
 - ALL WIRES ARE TO BE CLAMPED WITH CLAMP 10497-05-000 WITHIN 200 OF OUTLET BOXES. USE SCREW G67-10-12B.
 - ALL WIRES TO BE CLAMPED WITH CLAMP 10495-01-000 OR CLIP 80734-01-000 EVERY 600. USE SCREW G67-10-12B UNLESS OTHERWISE SPECIFIED.

NOTES:

39A RCP-E (BLU)
EXTERIOR
SEE DETAIL BA

FROM LEFT SIDE

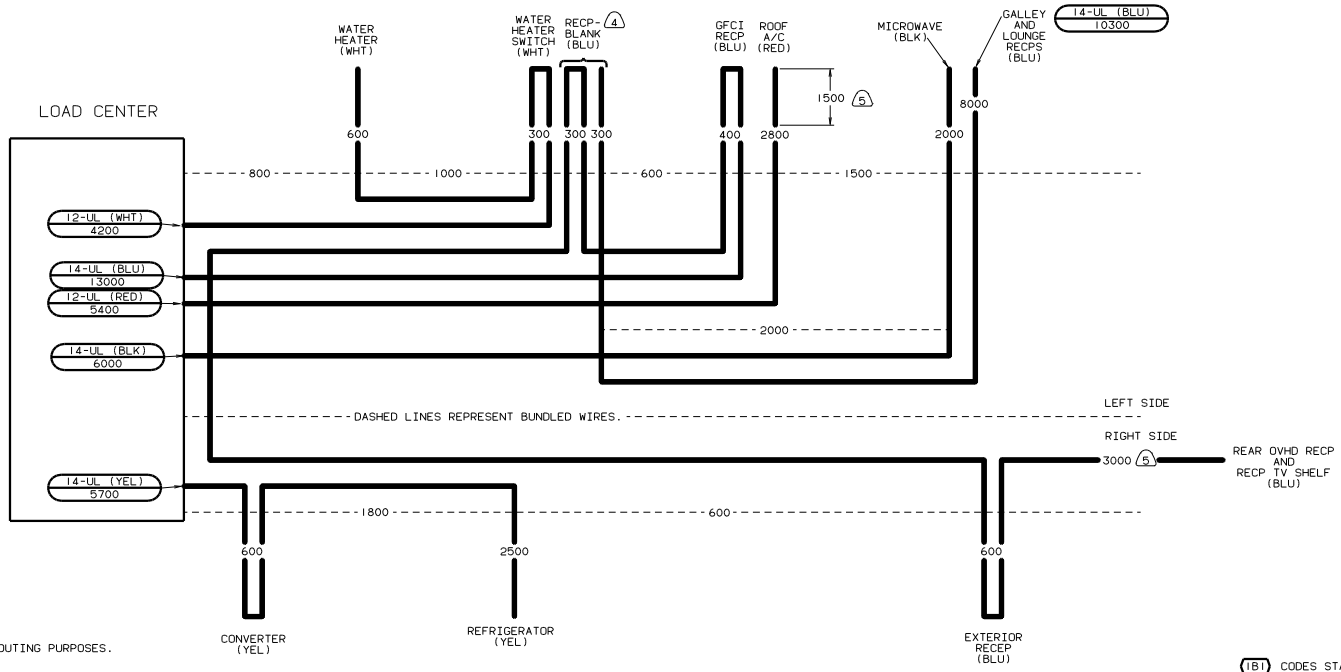
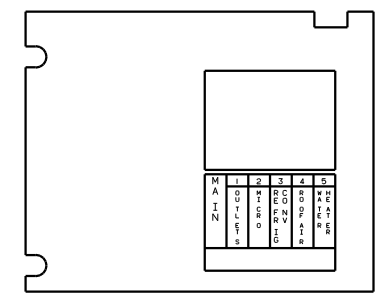
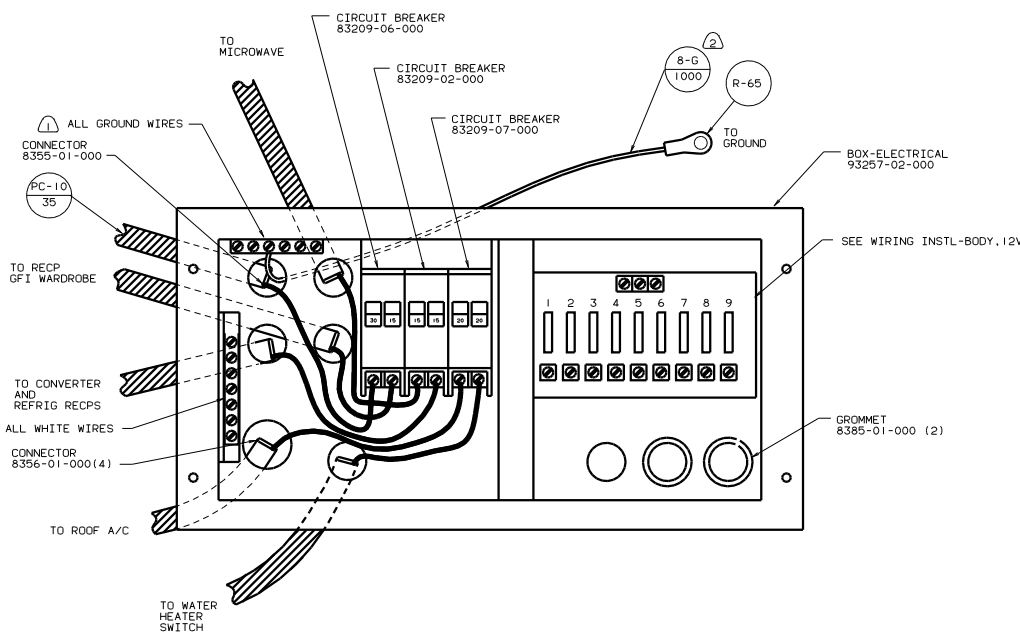
FOR ELECTRICAL
TORQUE
SPECIFICATIONS
SEE DWG NO.
128783-01-000

X-X FOR
ELECTRICAL
CALLOUTS
SEE DWG NO.
121339-01-000

- 39A EXT RECEPTACLE DPLX 120VAC
- 1B1 CODES STANDARDS/USA
- 12D ELECTRICAL SYSTEM 30 AMP

00 222HD 1B1 12D

WIRING INST - BODY 110V(R30US)
SHEET 2 OF 7



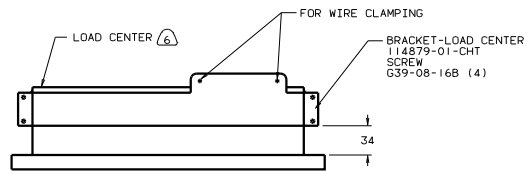
- ⑤ LEAVE CONDUIT OFF SPECIFIED LENGTH FOR ROUTING PURPOSES.
- ④ RECP BLANK TO BE INSTALLED IN WIRE PREP.
- 3. ALL CABLES SHALL BE COVERED WITH CONVOLUTE SLIT 41953-01-000 600 LESS THAN CABLE LENGTH, UNLESS OTHERWISE SPECIFIED.
- ② SOLDER DIP STRIPED END OF 8GA WIRE.
- ① ALL GROUND WIRES TO BE COVERED WITH TUBING 8041-02-000.

FOR ELECTRICAL TORQUE SPECIFICATIONS SEE DWG NO. 128783-01-000

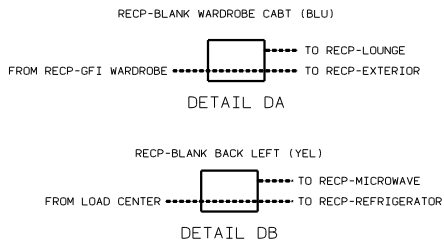
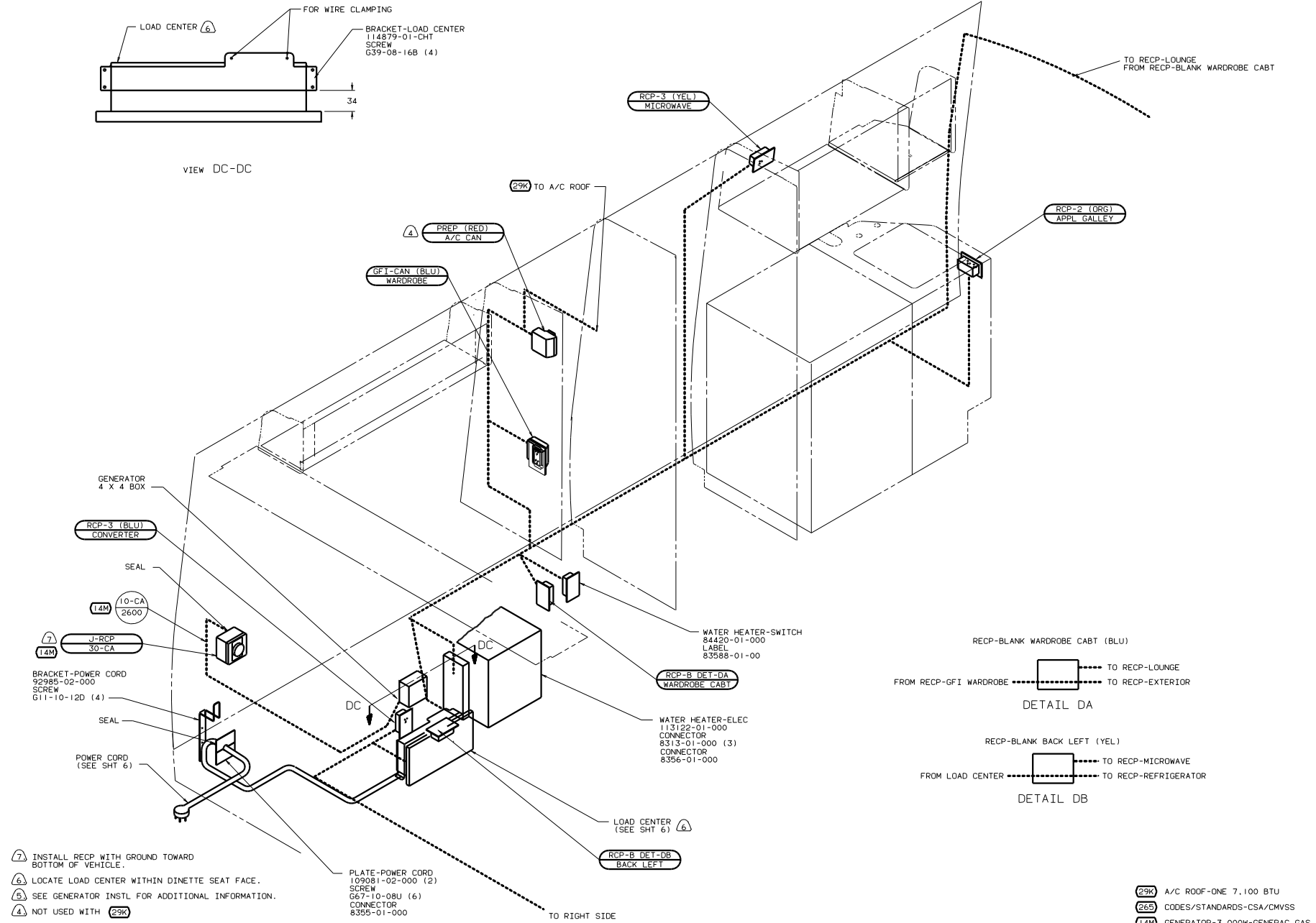
FOR ELECTRICAL CALLOUTS SEE DWG NO. 121339-01-000

(181) CODES STANDARDS/USA
 (120) ELECTRICAL SYSTEM 30 AMP

00 222HD (181) (120)
 WIRING INSTL-BODY.110V(1C30US)
 SHEET 3 OF 7
 133418



VIEW DC-DC

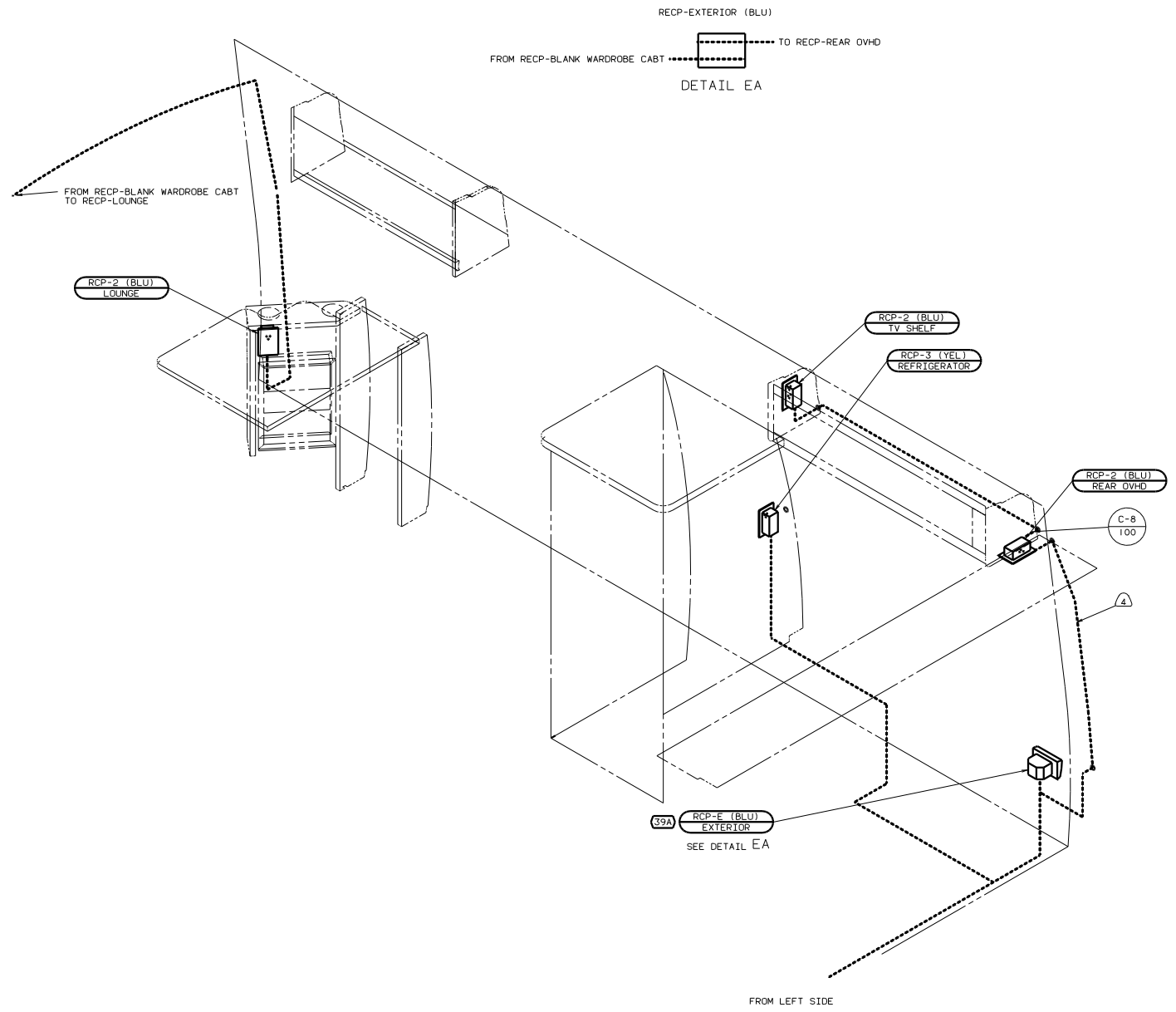


- (7) INSTALL RECP WITH GROUND TOWARD BOTTOM OF VEHICLE.
- (6) LOCATE LOAD CENTER WITHIN DINETTE SEAT FACE.
- (5) SEE GENERATOR INSTL FOR ADDITIONAL INFORMATION.
- (4) NOT USED WITH (29K)
- 3. ALL GROUND WIRES TO BE COVERED WITH TUBING 8011-02-000.
- 2. ALL WIRES ARE TO BE CLAMPED WITH CLAMP 10497-05-000 WITHIN 200 OF OUTLET BOXES. USE SCREW G67-10-12B.
- 1. ALL WIRES TO BE CLAMPED WITH CLAMP 10495-01-000 OR CLIP 80734-01-000 EVERY 600. USE SCREW G67-10-12B UNLESS OTHERWISE SPECIFIED.

PLATE-POWER CORD
109081-02-000 (2)
SCREW
G67-10-08U (6)
CONNECTOR
8355-01-000

- (29K) A/C ROOF-ONE 7.100 BTU
- (265) CODES/STANDARDS-CSA/CMVSS
- (14M) GENERATOR-3.000W-GENERAC GAS
- (12D) ELECTRICAL SYSTEM 30 AMP

FOR ELECTRICAL TORQUE SPECIFICATIONS SEE DWG NO. 128783-01-000	FOR ELECTRICAL CALLOUTS SEE DWG NO. 121339-01-000
--	---



- 4) ROUTE WIRE THRU SIDEWALL.
- 3. ALL GROUND WIRES TO BE COVERED WITH TUBING 8011-02-000.
- 2. ALL WIRES ARE TO BE CLAMPED WITH CLAMP 10497-05-000 WITHIN 200 OF OUTLET BOXES. USE SCREW G67-10-12B.
- 1. ALL WIRES TO BE CLAMPED WITH CLAMP 10495-01-000 OR CLIP 80734-01-000 EVERY 600. USE SCREW G67-10-12B UNLESS OTHERWISE SPECIFIED.

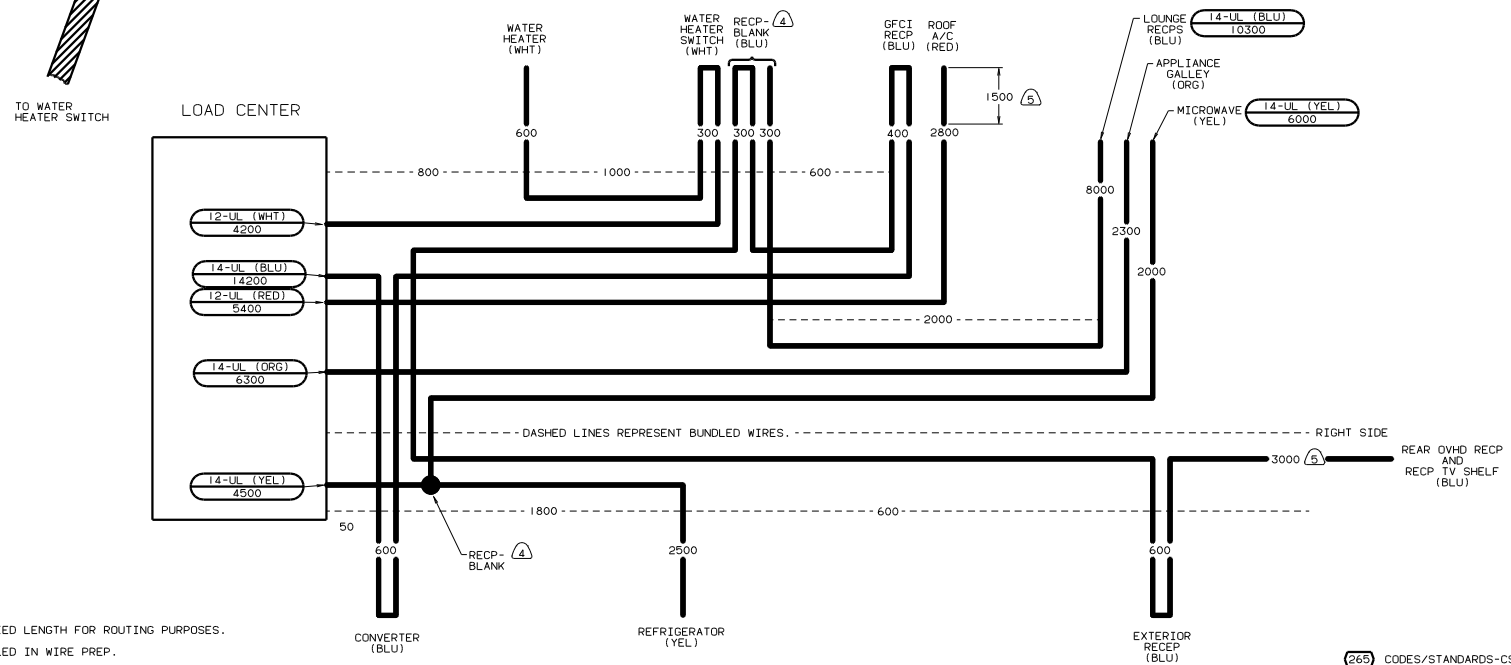
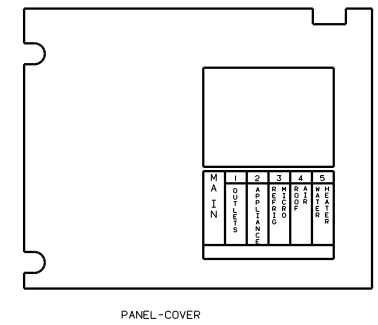
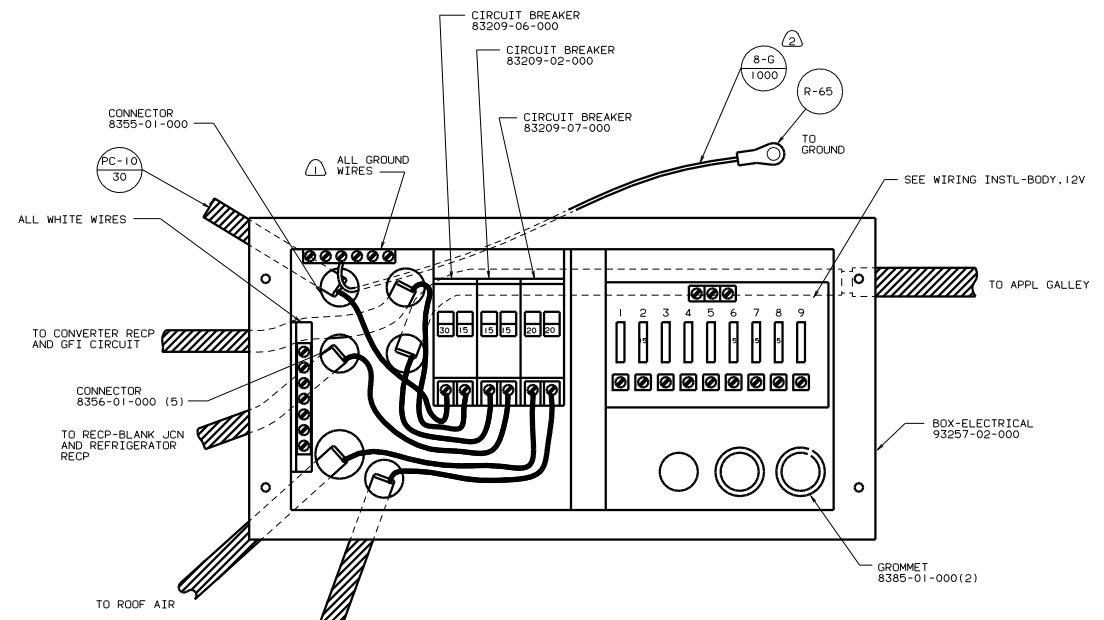
NOTES:

FOR ELECTRICAL TORQUE SPECIFICATIONS SEE DWG NO. 128783-01-000

FOR ELECTRICAL CALLOUTS SEE DWG NO. 121339-01-000

39A EXT RECEPTACLE DPLX 120VAC
 265 CODES/STANDARDS-GSA/CMVSS
 120 ELECTRICAL SYSTEM 30 AMP

00 222HD 265 120
 WIRING INSTL-BODY 110V(R30CA)
 SHEET 5 OF 7
 133418



- (A) LEAVE CONDUIT OFF SPECIFIED LENGTH FOR ROUTING PURPOSES.
- (B) RECP-BLANK TO BE INSTALLED IN WIRE PREP.
- 3. ALL CABLES SHALL BE COVERED WITH CONVOLUTE SLIT 41953-01-000 600 LESS THAN CABLE LENGTH, UNLESS OTHERWISE SPECIFIED.
- (C) SOLDER DIP STRIPED END OF 8GA WIRE.
- (D) ALL GROUND WIRES TO BE COVERED WITH TUBING 8041-02-000.

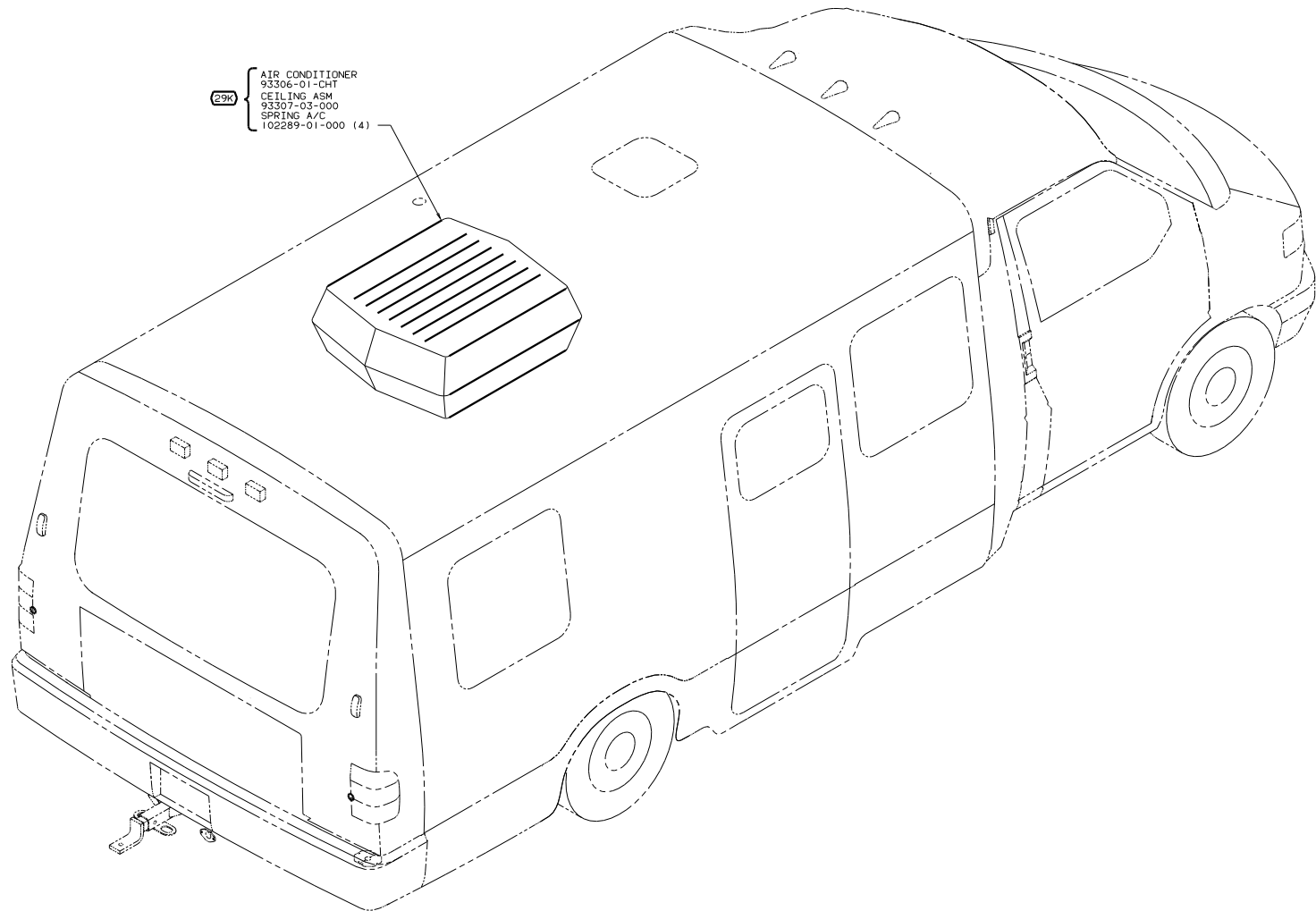
FOR ELECTRICAL TORQUE SPECIFICATIONS SEE DWG NO. 128783-01-000

FOR ELECTRICAL CALLOUTS SEE DWG NO. 121339-01-000

(265) CODES/STANDARDS-CSA/CMVSS
 (120) ELECTRICAL SYSTEM 30 AMP

00 222HD (265) (120)

WIRING INSTL-BODY.110V(LC30CA)
 SHEET 6 OF 7



29K { AIR CONDITIONER
 93306-01-DHT
 CEILING ASM
 93307-03-000
 SPRING A/C
 102289-01-000 (4)

- 29K A/C ROOF-ONE 7,100 BTU
- 265 CODES/STANDARDS-CSA/CMVSS
- 1B1 CODES STANDARDS/USA

FOR ELECTRICAL
 TORQUE
 SPECIFICATIONS
 SEE DWG NO.
 128783-01-000

00 222HD 1B1 265

TITLE: WIRING INSTL-BODY(EX L)
 SHEET 7 OF 7 I.E. NO. 133418

NOTES: