



DANGER

Danger of electrical shock, burns or death. Always remove all power sources before attempting any repair, service or diagnostic work. Power can be present from shore power, generator, inverter or battery. All power sources must be disabled and secured before performing any service.

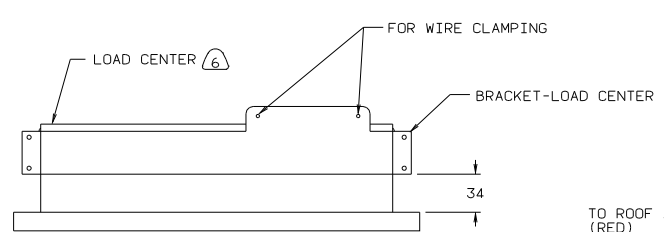


CAUTION

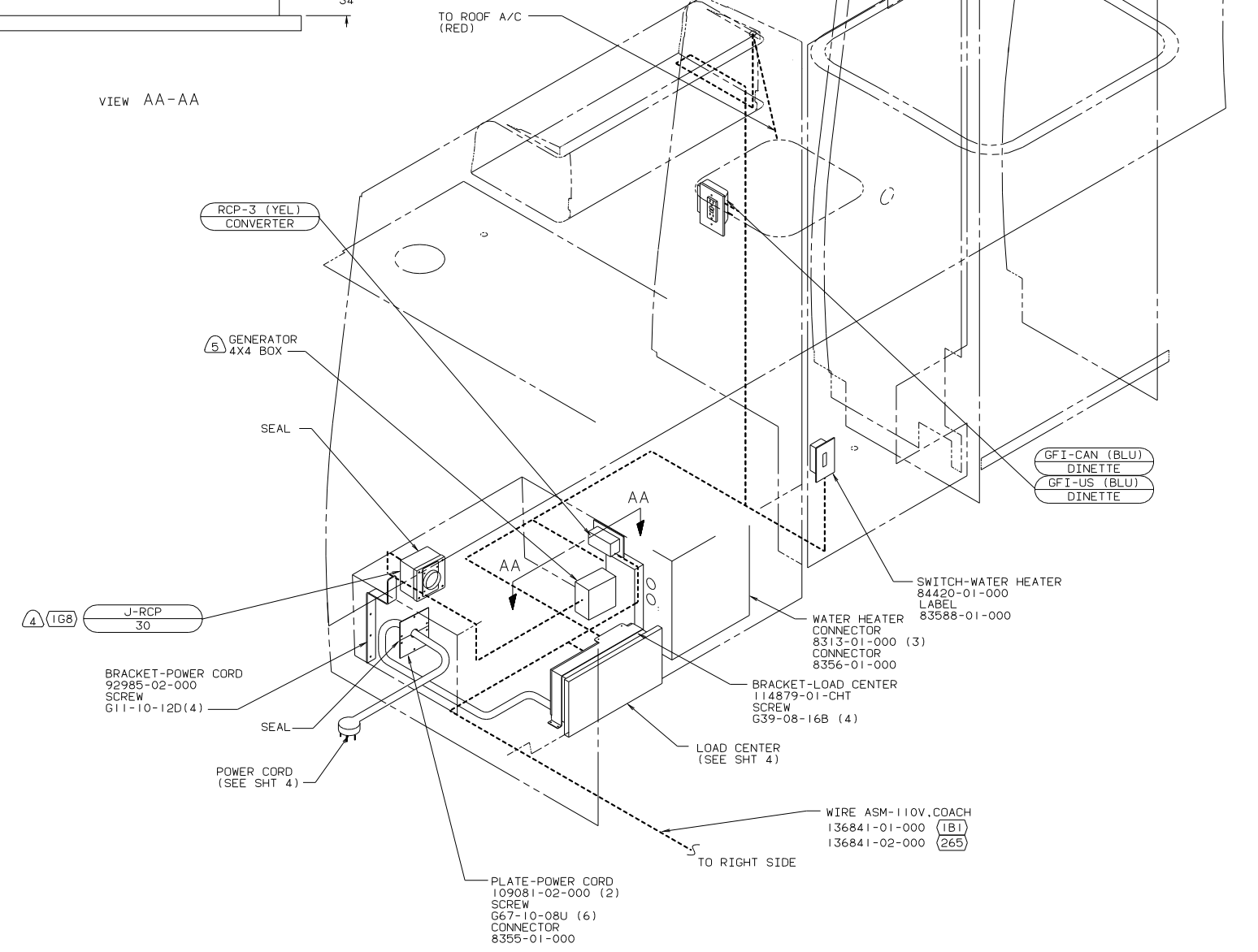
If you lack the skills, tools or equipment to perform diagnostic or repair work leave such work to an authorized Winnebago Industries dealer or other qualified shop.

DWG NO.	FEATURE
141375-01	-----
141375-11	(1B1)(12D)
141375-15	(265)(12D)
141375-30	(04L)(12D)

RELEASE	REV A	DATE	07/23/02	ADM	NO	141375
REV ZONE	REVISION RECORD		DATE	07/23/02		



VIEW AA-AA



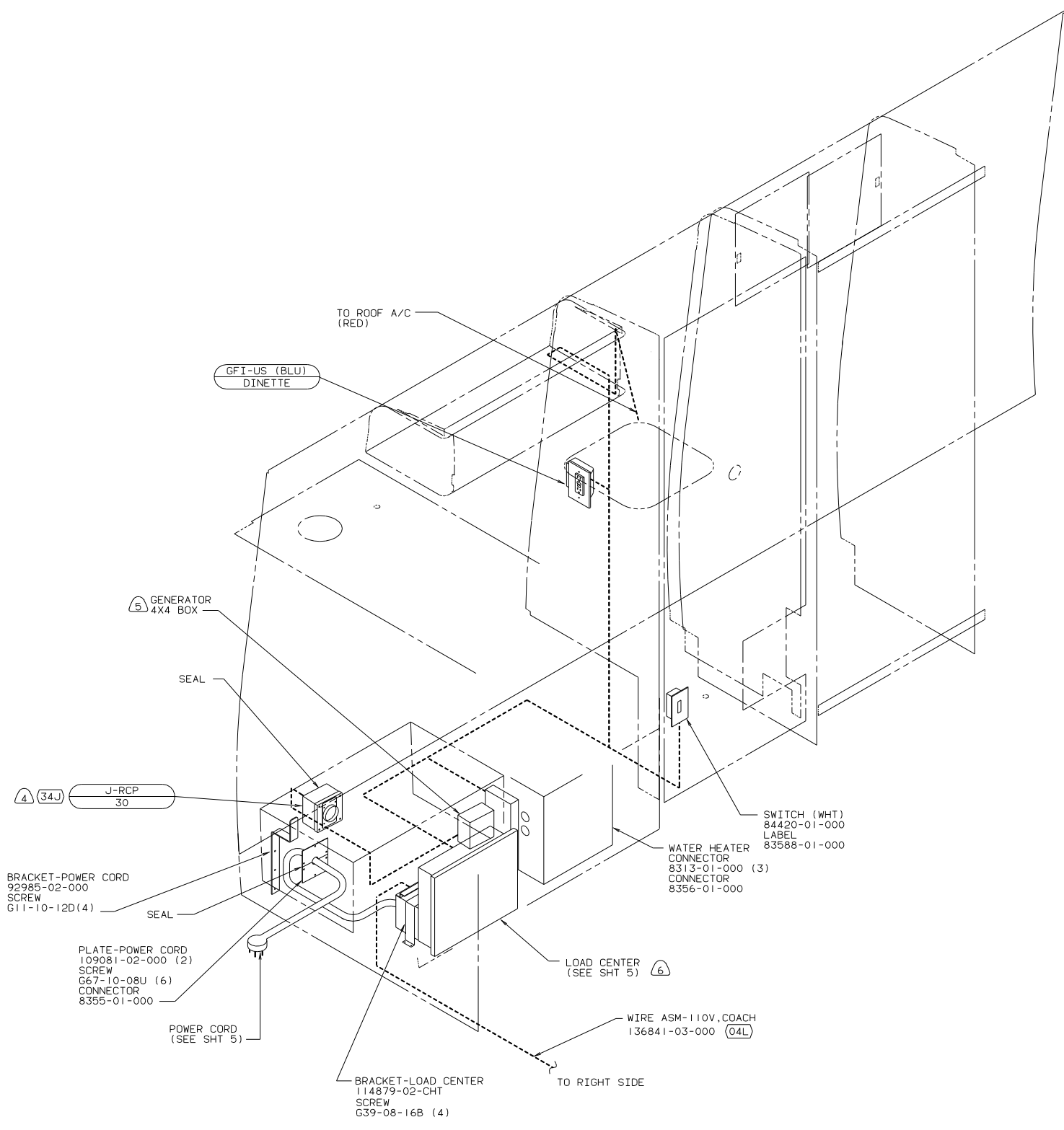
- (1G8) GEN-2.8KW ONAN MICROLITE
- (29K) A/C ROOF-ONE 7,100 BTU
- (12D) ELECTRICAL SYSTEM 30 AMP
- (265) CODES/STANDARDS-CSA/CMVSS
- (1B1) CODES STANDARDS/USA

- NOTES:
- LOCATE LOAD CENTER WITHIN DINETTE SEAT FACE.
 - SEE GENERATOR INSTL FOR ADDITIONAL INFORMATION.
 - INSTALL RCP WITH GROUND TOWARD BOTTOM OF VEHICLE.
 - ALL GROUND WIRES TO BE COVERED WITH TUBING 8041-02-000.
 - ALL WIRES ARE TO BE CLAMPED WITH CLAMP 10497-05-000 WITHIN 200 OF OUTLET BOXES, USE SCREW G67-10-12B.
 - ALL WIRES TO BE CLAMPED WITH CLAMP 10495-01-000 OR CLIP 80734-01-000 EVERY 600, USE SCREW G67-10-12B UNLESS OTHERWISE SPECIFIED.

FOR ELECTRICAL TORQUE SPECIFICATIONS SEE DWG NO. 128783-01-000

FOR ELECTRICAL CALLOUTS SEE DWG NO. 121339-01-000

COPYRIGHT 2002 WINNEBAGO INDUSTRIES, INC.		WINNEBAGO		03 2220D
LAYOUT NO	DATE	UNSPECIFIED TOLERANCES ARE:	MATERIAL:	
DWR	DATE	ANGLE DIM (XX)	+	
P E	DATE	ONE-PLACE (X, XX)	+	
M E	DATE	TWO-PLACE (X, XX)	+	
DSNR	DATE	ANGLE	+	
	DATE	THIRD ANGLE PROJECTION	+	
TITLE: WIRING INSTL-BODY, 110V(L30)				
DIA #	SCALE: NONE	DO NOT SCALE DRAWINGS	SIZE	DWG NO
			1 OF 5	141375
ALL DIMENSIONS ARE IN MILLIMETERS SHEET 1 OF 5				



- ⑥ LOCATE LOAD CENTER WITHIN DINETTE SEAT FACE.
- ⑤ SEE GENERATOR INSTL FOR ADDITIONAL INFORMATION.
- ④ INSTALL RCP WITH GROUND TOWARD BOTTOM OF VEHICLE.
- 3. ALL GROUND WIRES TO BE COVERED WITH TUBING 8041-02-000.
- 2. ALL WIRES ARE TO BE CLAMPED WITH CLAMP 10497-05-000 WITHIN 200 OF OUTLET BOXES, USE SCREW G67-10-12B.
- 1. ALL WIRES TO BE CLAMPED WITH CLAMP 10495-01-000 OR CLIP 80734-01-000 EVERY 600, USE SCREW G67-10-12B UNLESS OTHERWISE SPECIFIED.

NOTES:

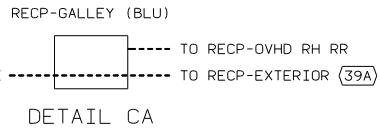
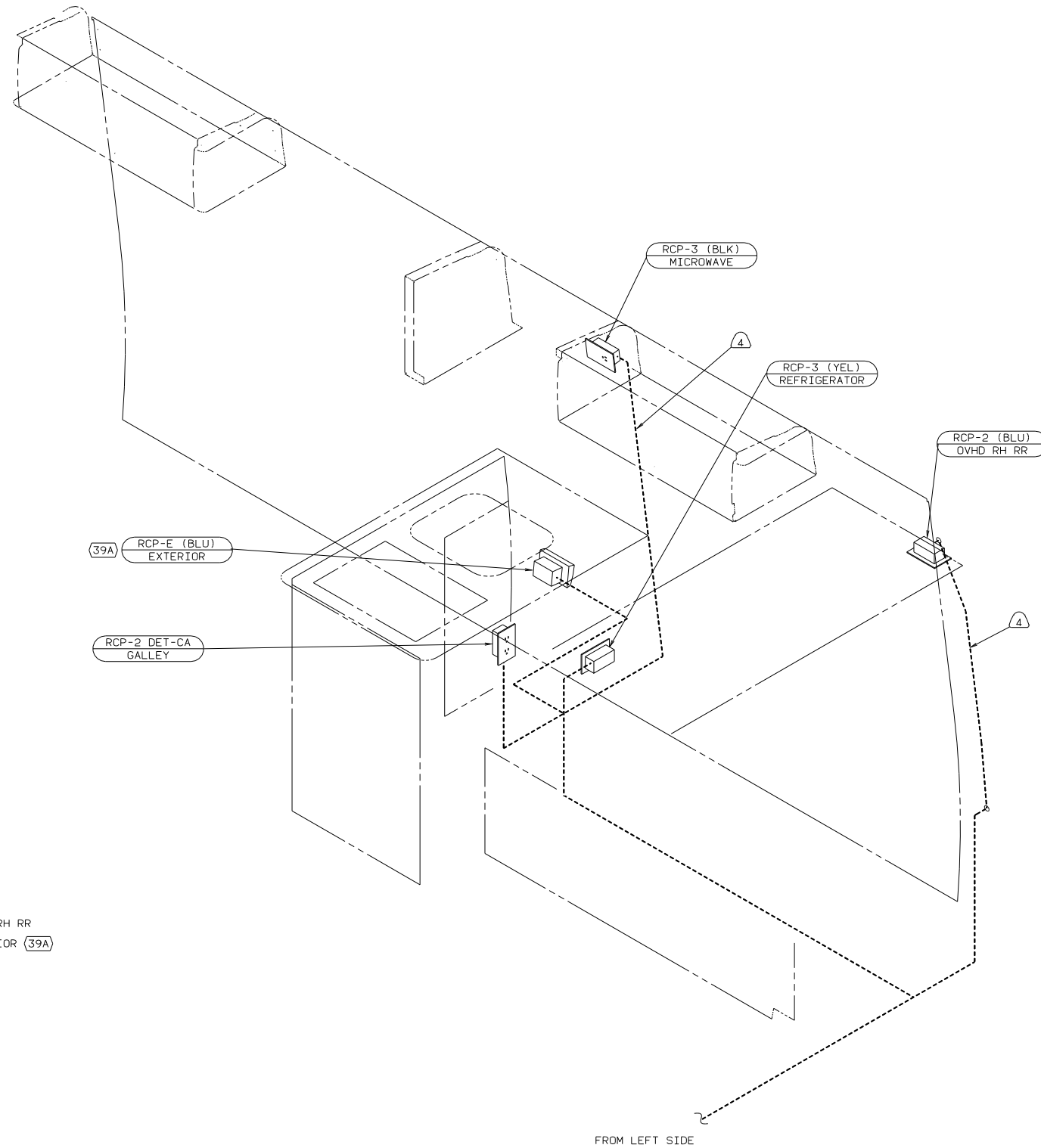
- ③4J GEN-2.8KW GENERAC 100V
- ②9K A/C ROOF-ONE 7,100 BTU
- ①2D ELECTRICAL SYSTEM 30 AMP
- ④4L JAPAN EXPORT PACKAGE

FOR ELECTRICAL TORQUE SPECIFICATIONS SEE DWG NO. 128783-01-000

FOR ELECTRICAL CALLOUTS SEE DWG NO. 121339-01-000

④4L ①2D ②9K 03 222QD

TITLE: WIRING INSTL-BODY, 110V(L30JPN)
 DWG NO: 141375
 SHEET 2 OF 5



- (4) ROUTE WIRE THRU SIDEWALL.
- ALL GROUND WIRES TO BE COVERED WITH TUBING 8041-02-000.
 - ALL WIRES ARE TO BE CLAMPED WITH CLAMP 10497-05-000 WITHIN 200 OF OUTLET BOXES, USE SCREW G67-10-12B.
 - ALL WIRES TO BE CLAMPED WITH CLAMP 10495-01-000 OR CLIP 80734-01-000 EVERY 600, USE SCREW G67-10-12B UNLESS OTHERWISE SPECIFIED.

NOTES:

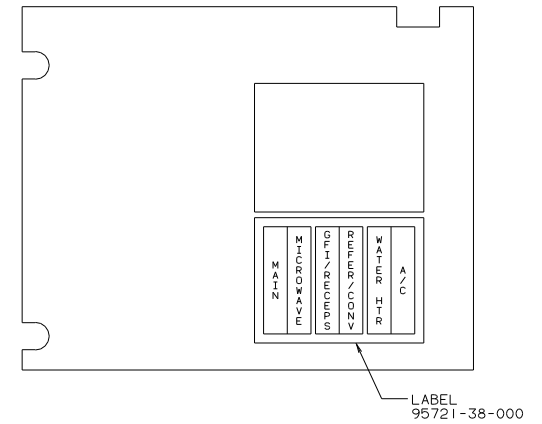
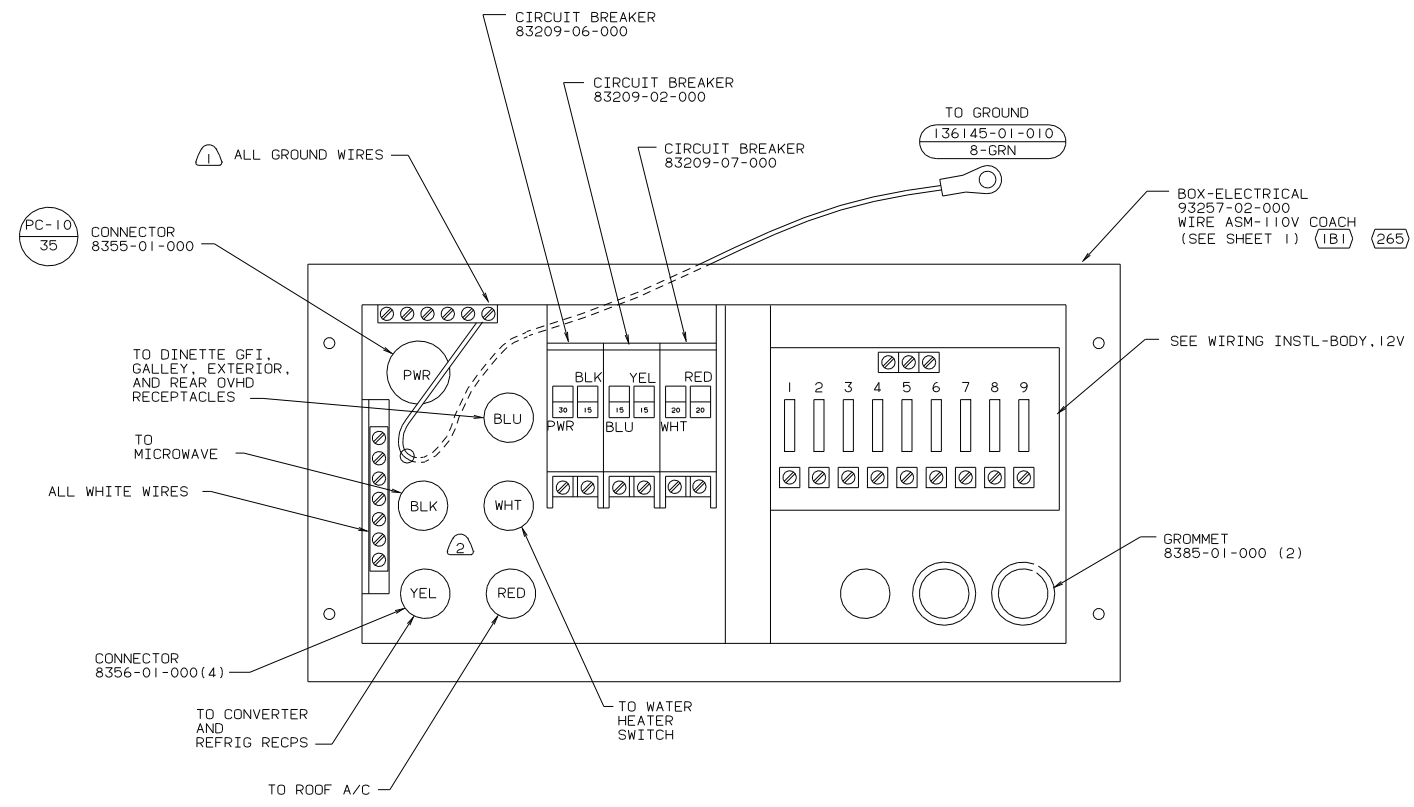
FOR ELECTRICAL TORQUE SPECIFICATIONS SEE DWG NO. 128783-01-000

(X-X) FOR ELECTRICAL CALLOUTS SEE DWG NO. 121339-01-000

- (04L) JAPAN EXPORT PACKAGE
- (39A) EXT RECEPTICALE DPLX 120VAC
- (12D) ELECTRICAL SYSTEM 30 AMP
- (265) CODES/STANDARDS-CSA/CMVSS
- (1B1) CODES STANDARDS/USA

(1B1) (265) (12D) 03 2220D

TITLE: WIRING INSTL-BODY, 110V(R30)
 DD NOT SCALE DRAWING SIZE DWG NO 141375
 SHEET 3 OF 5 I.e. No



NOTES:
 (2) 110V CABLES IN LOAD CENTER SHALL BE 200 LONG.
 (1) ALL GROUND WIRES TO BE COVERED WITH TUBING 8041-02-000.

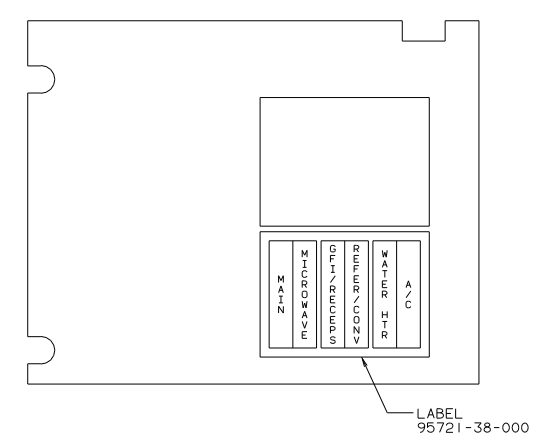
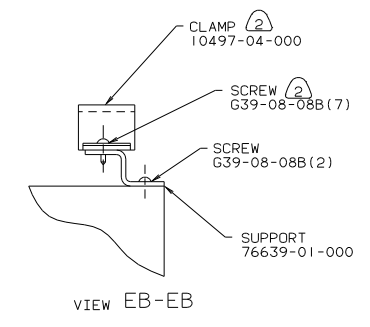
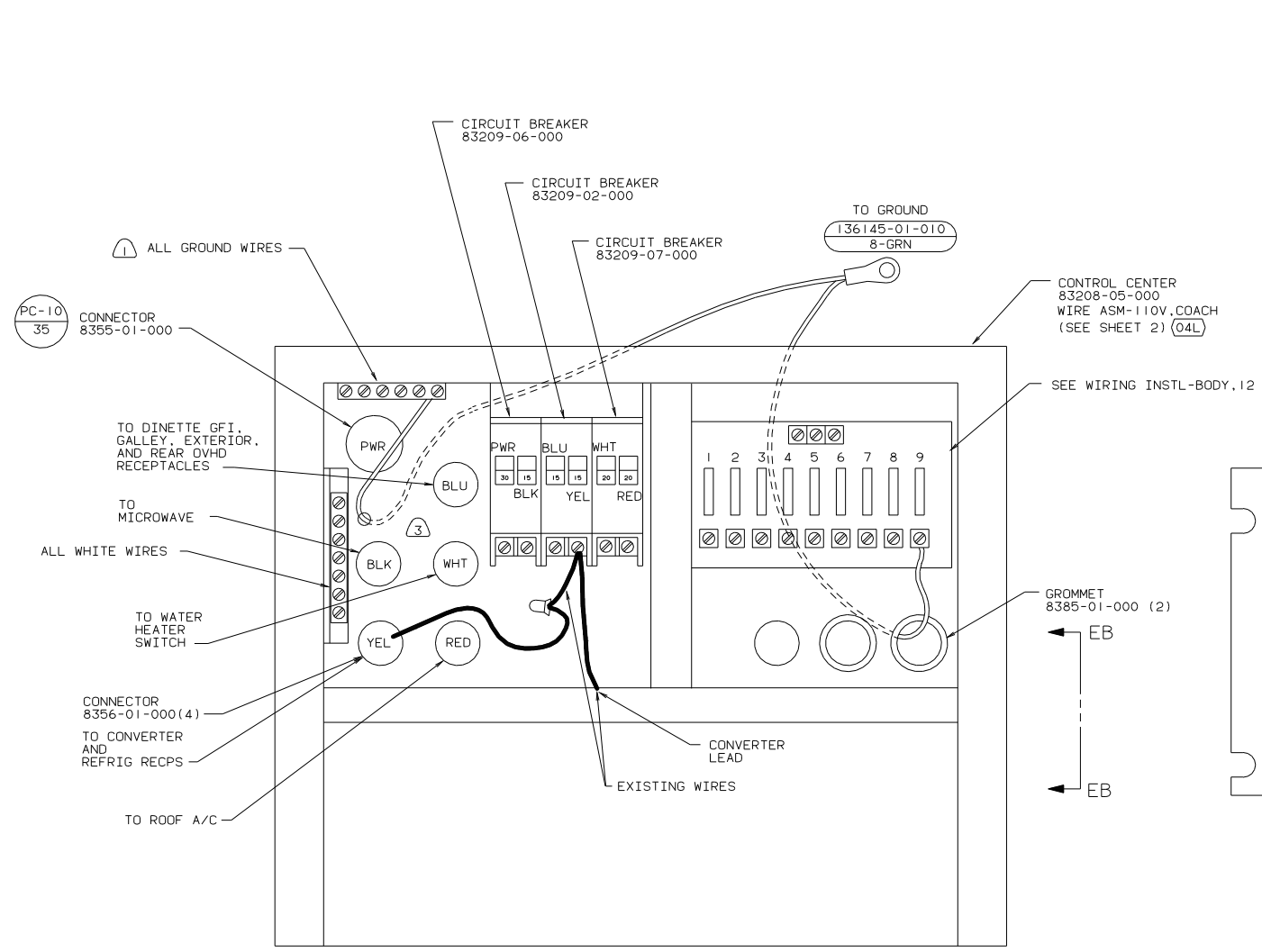
FOR ELECTRICAL TORQUE SPECIFICATIONS SEE DWG NO. 128783-01-000

(X-X)

FOR ELECTRICAL CALLOUTS SEE DWG NO. 121339-01-000

(12D) ELECTRICAL SYSTEM 30 AMP
 (265) CODES/STANDARDS-CSA/CMVSS
 (1B1) CODES STANDARDS/USA
 (1B1) (12D) (265) 03 2220D

TITLE: WIRING INSTL-BODY, 110V(LC30)
 DO NOT SCALE DRAWING SIZE: 11x17 DWG NO: 141375
 SHEET 4 OF 5 I.e. NO 141375



- NOTES:
- (3) 110V CABLES IN LOAD CENTER SHALL BE 200 LONG.
 - (2) FASTEN ALL WIRES TO SUPPORT. USE ONE SCREW PER CLAMP.
 - (1) ALL GROUND WIRES TO BE COVERED WITH TUBING 8041-02-000.

FOR ELECTRICAL TORQUE SPECIFICATIONS SEE DWG NO. 128783-01-000	(X-X)	FOR ELECTRICAL CALLOUTS SEE DWG NO. 121339-01-000
--	-------	---

(12D) ELECTRICAL SYSTEM 30 AMP
 (04L) JAPAN EXPORT PACKAGE
 (04L) (12D) 03 222QD

TITLE	WIRING INSTL-BODY (LC30JPN)
DD	NO
SCALE	DRWING
SIZE	NO
SHEET	5 OF 5
DWG NO	141375
DATE	07/23/02