



DANGER

Danger of electrical shock, burns or death. Always remove all power sources before attempting any repair, service or diagnostic work. Power can be present from shore power, generator, inverter or battery. All power sources must be disabled and secured before performing any service.

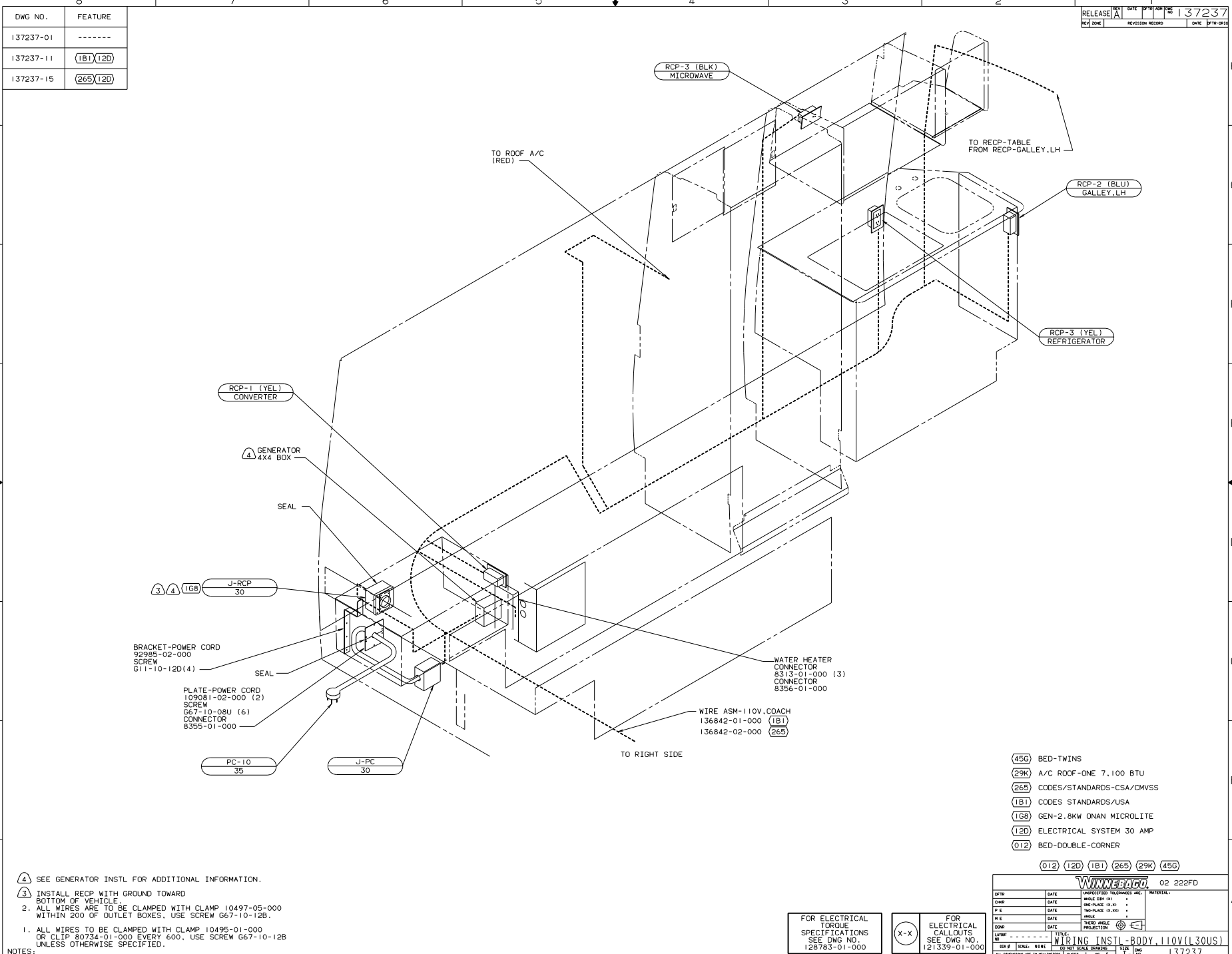


CAUTION

If you lack the skills, tools or equipment to perform diagnostic or repair work leave such work to an authorized Winnebago Industries dealer or other qualified shop.

DWG NO.	FEATURE
137237-01	-----
137237-11	(181)(120)
137237-15	(265)(120)

RELEASE A REV DATE OF THIS DRAWING 137237
 REVISION RECORD DATE BY



- 4 SEE GENERATOR INSTL FOR ADDITIONAL INFORMATION.
- 3 INSTALL RECP WITH GROUND TOWARD BOTTOM OF VEHICLE.
2. ALL WIRES ARE TO BE CLAMPED WITH CLAMP 10497-05-000 WITHIN 200 OF OUTLET BOXES. USE SCREW G67-10-12B.
1. ALL WIRES TO BE CLAMPED WITH CLAMP 10495-01-000 OR CLIP 80734-01-000 EVERY 600. USE SCREW G67-10-12B UNLESS OTHERWISE SPECIFIED.

- (45G) BED-TWINS
- (29K) A/C ROOF-ONE 7,100 BTU
- (265) CODES/STANDARDS-CSA/CMVSS
- (181) CODES STANDARDS/USA
- (1G8) GEN-2.8KW ONAN MICROLITE
- (120) ELECTRICAL SYSTEM 30 AMP
- (012) BED-DOUBLE-CORNER

(012) (120) (1B1) (265) (29K) (45G)

WINNEBAGO 02 222FD

DATE	DATE	UNSPECIFIED TOLERANCES ARE:	MATERIAL:
DATE	DATE	ONE-PLACE (1X,1X)	
DATE	DATE	TWO-PLACE (1X,1X)	
DATE	DATE	THREE-PLACE (1X,1X)	
DATE	DATE	FOUR-PLACE (1X,1X)	
DATE	DATE	FIVE-PLACE (1X,1X)	
DATE	DATE	SIX-PLACE (1X,1X)	
DATE	DATE	SEVEN-PLACE (1X,1X)	
DATE	DATE	EIGHT-PLACE (1X,1X)	
DATE	DATE	NINE-PLACE (1X,1X)	
DATE	DATE	TEN-PLACE (1X,1X)	
DATE	DATE	ELEVEN-PLACE (1X,1X)	
DATE	DATE	TWELVE-PLACE (1X,1X)	
DATE	DATE	THIRTEEN-PLACE (1X,1X)	
DATE	DATE	FOURTEEN-PLACE (1X,1X)	
DATE	DATE	FIFTEEN-PLACE (1X,1X)	
DATE	DATE	SIXTEEN-PLACE (1X,1X)	
DATE	DATE	SEVENTEEN-PLACE (1X,1X)	
DATE	DATE	EIGHTEEN-PLACE (1X,1X)	
DATE	DATE	NINETEEN-PLACE (1X,1X)	
DATE	DATE	TWENTY-PLACE (1X,1X)	
DATE	DATE	TWENTY-ONE PLACE (1X,1X)	
DATE	DATE	TWENTY-TWO PLACE (1X,1X)	
DATE	DATE	TWENTY-THREE PLACE (1X,1X)	
DATE	DATE	TWENTY-FOUR PLACE (1X,1X)	
DATE	DATE	TWENTY-FIVE PLACE (1X,1X)	
DATE	DATE	TWENTY-SIX PLACE (1X,1X)	
DATE	DATE	TWENTY-SEVEN PLACE (1X,1X)	
DATE	DATE	TWENTY-EIGHT PLACE (1X,1X)	
DATE	DATE	TWENTY-NINE PLACE (1X,1X)	
DATE	DATE	THIRTY PLACE (1X,1X)	

FOR ELECTRICAL TORQUE SPECIFICATIONS SEE DWG NO. 128783-01-000

FOR ELECTRICAL CALLOUTS SEE DWG NO. 121339-01-000



WIRING INSTL-BODY,110V(L30US)
 SHEET 1 OF 4 I.F. NO. 137237

FROM RECP-GALLEY.LH
TO RECP-TABLE

RCP-2 (BLU)
TABLE

GFT-US (BLU)
NIGHTSTAND
GFT-CA (BLU)
NIGHTSTAND

SWITCH-WATER HEATER
84420-01-000
LABEL
83588-01-000
(WHT)

RCP-E (BLU)
EXTERIOR (39A)

LOAD CENTER
(SEE SHT 4)

TO LEFT SIDE

- NOTES:
- ③ WIRE ROUTED BEHIND TRANSITION PANEL.
 - 2. ALL WIRES ARE TO BE CLAMPED WITH CLAMP 10497-05-000 WITHIN 200 OF OUTLET BOXES. USE SCREW G67-10-12B.
 - 1. ALL WIRES TO BE CLAMPED WITH CLAMP 10495-01-000 OR CLIP 80734-01-000 EVERY 600. USE SCREW G67-10-12B UNLESS OTHERWISE SPECIFIED.

- (39A) EXT RECEPTACLE DPLX 120VAC
- (012) BED-DOUBLE-CORNER
- (12D) ELECTRICAL SYSTEM 30 AMP
- (265) CODES/STANDARDS-CSA/CMVSS
- (1B1) CODES STANDARDS/USA

FOR ELECTRICAL
TORQUE
SPECIFICATIONS
SEE DWG NO.
128783-01-000

FOR
ELECTRICAL
CALLOUTS
SEE DWG NO.
121339-01-000

(1B1) (265) (12D) (012) 02 222FD

WIRING INSTL-BODY.L110V(R30)

FROM RECP-GALLEY
TO RECP-TABLE

RCP-2 (BLU)
TABLE

(3)

SWITCH-WATER HEATER
84420-01-000
LABEL
83588-01-000
(WHT)

LOAD CENTER
(SEE SHT 4)

RCP-E (BLU)
EXTERIOR (39A)

TO LEFT SIDE

GFI-US (BLU)
NIGHTSTAND
GFI-CA (BLU)
NIGHTSTAND

(15G)

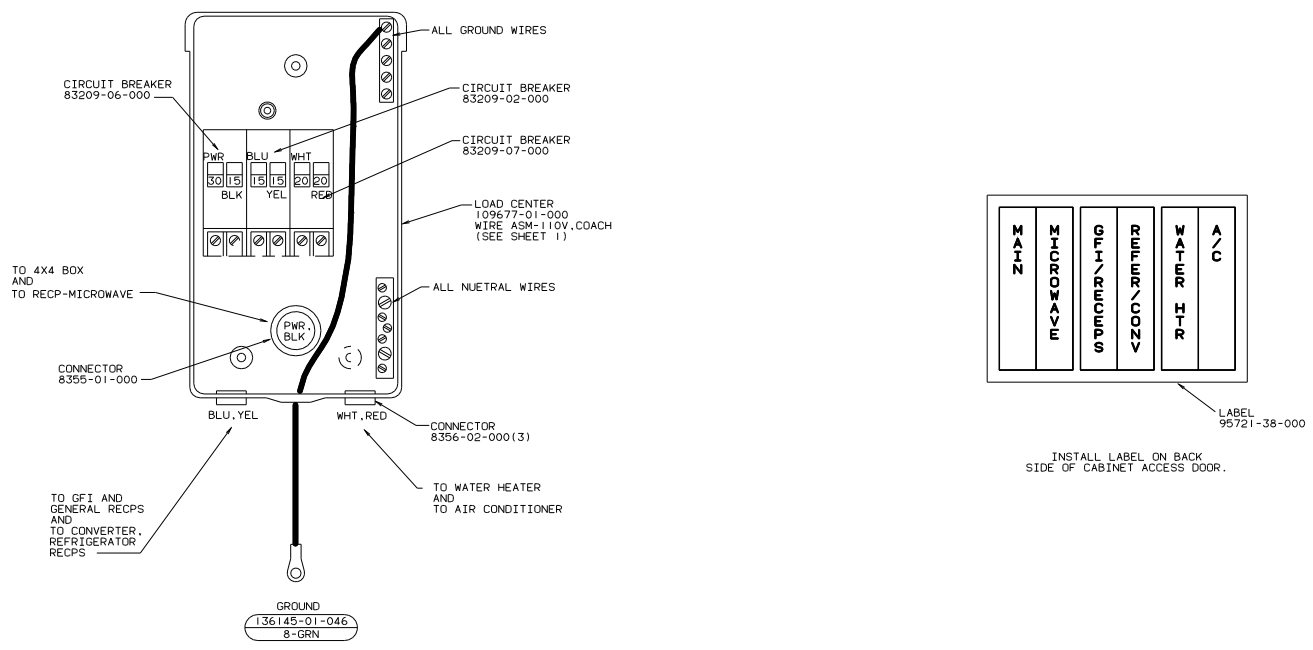
- NOTES:
- 1. ALL WIRES TO BE CLAMPED WITH CLAMP 10495-01-000 OR CLIP 80734-01-000 EVERY 600. USE SCREW G67-10-12B UNLESS OTHERWISE SPECIFIED.
 - 2. ALL WIRES ARE TO BE CLAMPED WITH CLAMP 10497-05-000 WITHIN 200 OF OUTLET BOXES. USE SCREW G67-10-12B.
 - 3. WIRE ROUTED BEHIND TRANSITION PANEL.

- (45G) BED-TWINS
- (39A) EXT RECEPTACLE DPLX 120VAC
- (12D) ELECTRICAL SYSTEM 30 AMP
- (265) CODES/STANDARDS-CSA/CMVSS
- (1B1) CODES STANDARDS/USA

FOR ELECTRICAL
TORQUE
SPECIFICATIONS
SEE DWG NO.
128783-01-000

FOR
ELECTRICAL
CALLOUTS
SEE DWG NO.
121339-01-000

(1B1) (265) (12D) (45G) 02 222FD
WIRING INSTL-BODY.L110V(R30)
DO NOT SCALE DRAWING SEE DWG NO. 137237
SHEET 3 OF 4



1. ALL CABLES SHALL BE COVERED WITH CONDUIT-CONVOLUTE, SLIT 41953-01-000, UNLESS OTHERWISE SPECIFIED, 600 LESS THAN CABLE LENGTH.

NOTES:

- (45G) BED-TWINS
- (265) CODES/STANDARDS-CSA/CMVSS
- (1B1) CODES STANDARDS/USA
- (12D) ELECTRICAL SYSTEM 30 AMP
- (012) BED-DOUBLE-CORNER

FOR ELECTRICAL TORQUE SPECIFICATIONS SEE DWG NO. 128783-01-000

FOR ELECTRICAL CALLOUTS SEE DWG NO. 121339-01-000

(012) (12D) (1B1) (265) (45G) 02 222FD

TITLE: WIRING INSTL-BODY(LC30)
 DO NOT SCALE DRAWING SHEET 4 OF 4 I.F. No. 137237