



**DANGER**

**Danger of electrical shock, burns or death.** Always remove all power sources before attempting any repair, service or diagnostic work. Power can be present from shore power, generator, inverter or battery. All power sources must be disabled and secured before performing any service.

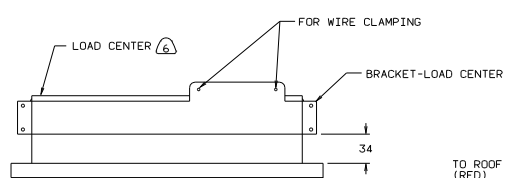


**CAUTION**

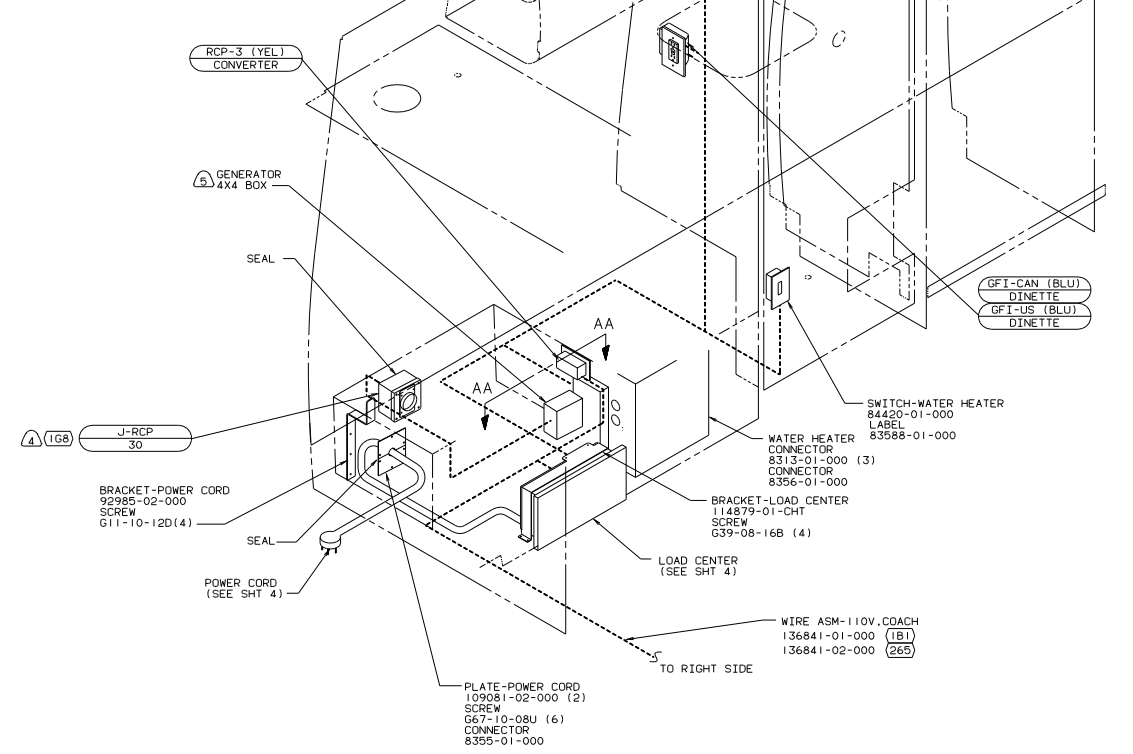
If you lack the skills, tools or equipment to perform diagnostic or repair work leave such work to an authorized Winnebago Industries dealer or other qualified shop.

DWG NO.	FEATURE
137236-01	-----
137236-11	(1B1)(12D)
137236-15	(265)(12D)
137236-30	(04L)(12D)

RELEASE A REV DATE 137236  
 REV NO. REVISION RECORD DATE 137236



VIEW AA-AA



- (6) LOCATE LOAD CENTER WITHIN DINETTE SEAT FACE.  
 (5) SEE GENERATOR INSTL FOR ADDITIONAL INFORMATION.  
 (4) INSTALL RCP WITH GROUND TOWARD BOTTOM OF VEHICLE.  
 3. ALL GROUND WIRES TO BE COVERED WITH TUBING 8041-02-000.  
 2. ALL WIRES ARE TO BE CLAMPED WITH CLAMP 10497-05-000 WITHIN 200 OF OUTLET BOXES. USE SCREW G67-10-12B.  
 1. ALL WIRES TO BE CLAMPED WITH CLAMP 10495-01-000 OR CLIP 80734-01-000 EVERY 600. USE SCREW G67-10-12B UNLESS OTHERWISE SPECIFIED.

- (1G8) GEN-2.8KW ONAN MICROLITE  
 (29K) A/C ROOF-DNE 7,100 BTU  
 (12D) ELECTRICAL SYSTEM 30 AMP  
 (265) CODES/STANDARDS-CSA/CMVSS  
 (1B1) CODES/STANDARDS/USA

FOR ELECTRICAL TORQUE SPECIFICATIONS SEE DWG NO. 128783-01-000

(X-X) FOR ELECTRICAL CALLOUTS SEE DWG NO. 121339-01-000

(1B1) (12D) (265) (29K)

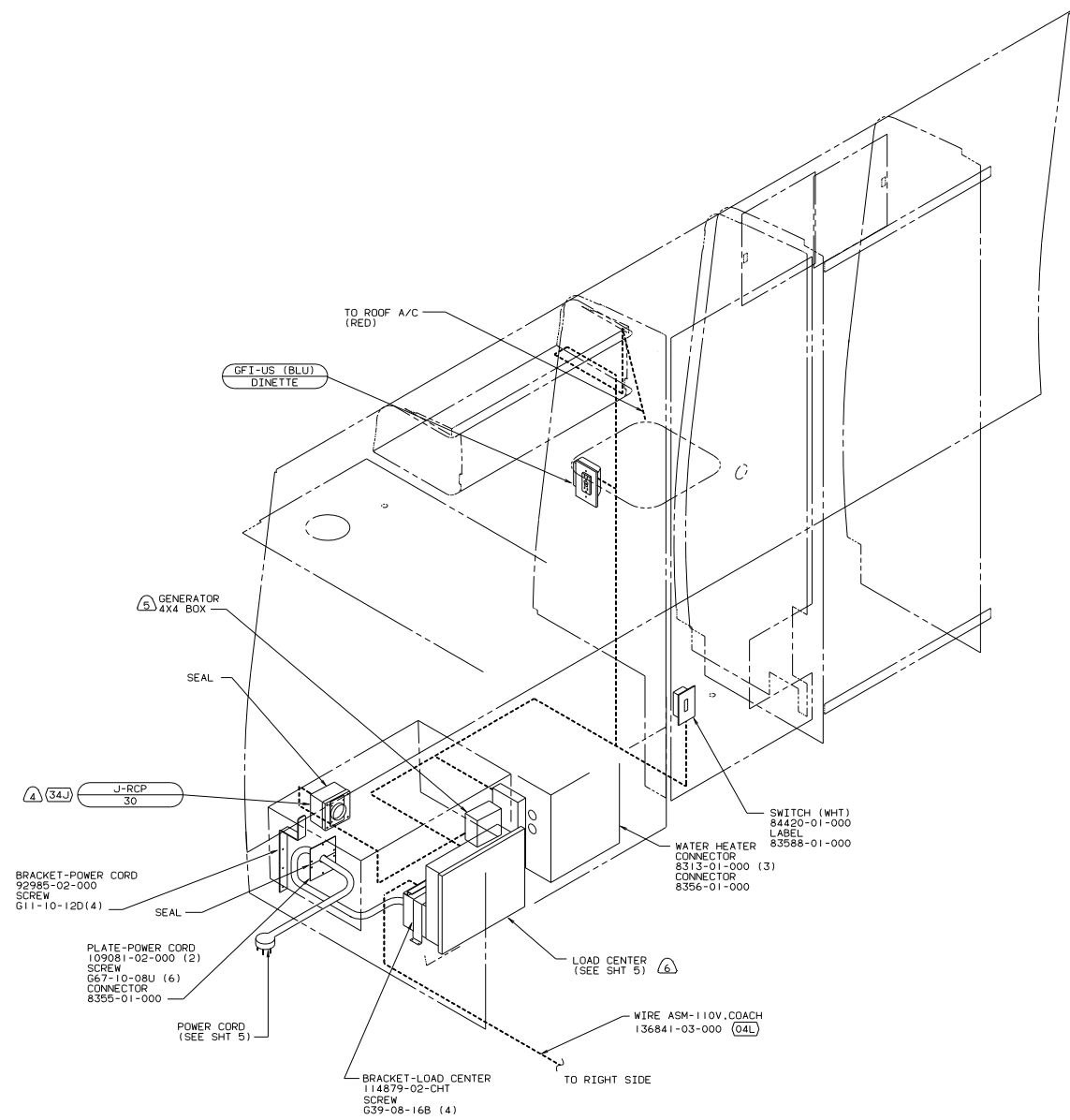
WINNEBAGO 02 22200

DATE	UNSPECIFIED TOLERANCES ARE:	MATERIAL
DATE	UNLESS SHOWN OTHERWISE	
DATE	ONE-PLACE (1X.XX)	
DATE	TWO-PLACE (1X.XX)	
DATE	THREE-PLACE (1X.XXX)	
DATE	FOUR-PLACE (1X.XXXX)	

WIRING INSTL-BODY.110V(L30)

SCALE: NONE DO NOT SCALE DIMENSIONS

REF: 135871 G I PAGE 14



- ⑥ LOCATE LOAD CENTER WITHIN DINETTE SEAT FACE.
  - ⑤ SEE GENERATOR INSTL FOR ADDITIONAL INFORMATION.
  - ④ INSTALL RCP WITH GROUND TOWARD BOTTOM OF VEHICLE.
3. ALL GROUND WIRES TO BE COVERED WITH TUBING 8041-02-000.
2. ALL WIRES ARE TO BE CLAMPED WITH CLAMP 10497-05-000 WITHIN 200 OF OUTLET BOXES. USE SCREW G67-10-12B.
1. ALL WIRES TO BE CLAMPED WITH CLAMP 10495-01-000 OR CLIP 80734-01-000 EVERY 600. USE SCREW G67-10-12B UNLESS OTHERWISE SPECIFIED.

NOTES:

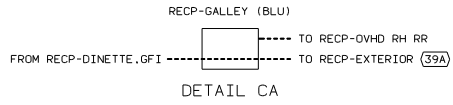
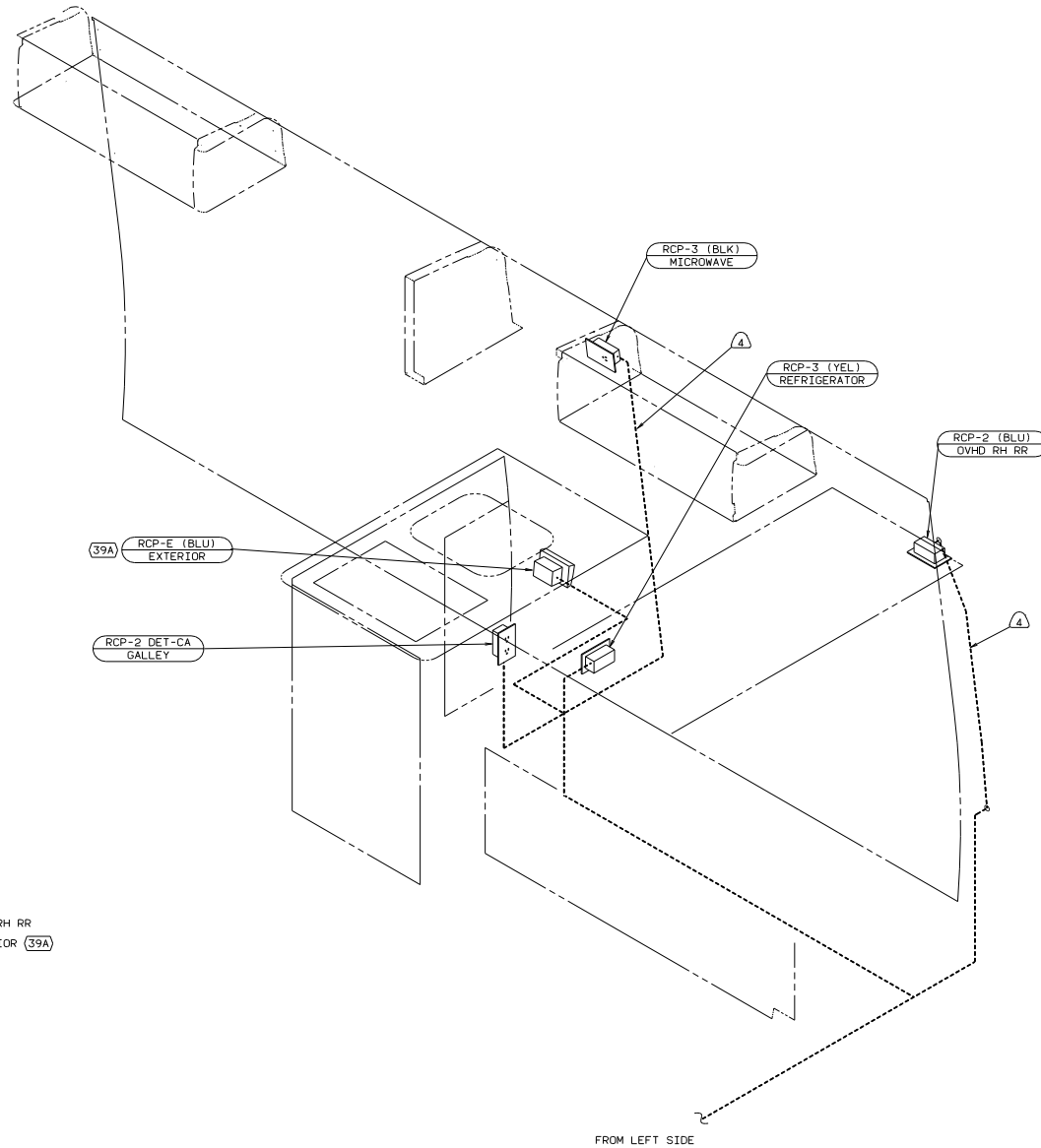
- (34J) GEN-2.8KW GENERAC 100V
- (29K) A/C ROOF-ONE 7,100 BTU
- (12D) ELECTRICAL SYSTEM 30 AMP
- (04L) JAPAN EXPORT PACKAGE

FOR ELECTRICAL TORQUE SPECIFICATIONS SEE DWG NO. 128783-01-000

FOR ELECTRICAL CALLOUTS SEE DWG NO. 121339-01-000

(04L) (12D) (29K) 01 2220D

WIRING INSTL-BODY, 110V(L30JPN)



- 4 ROUTE WIRE THRU SIDEWALL.
- ALL GROUND WIRES TO BE COVERED WITH TUBING 8041-02-000.
  - ALL WIRES ARE TO BE CLAMPED WITH CLAMP 10497-05-000 WITHIN 200 OF OUTLET BOXES. USE SCREW G67-10-12B.
  - ALL WIRES TO BE CLAMPED WITH CLAMP 10495-01-000 OR CLIP 80734-01-000 EVERY 600. USE SCREW G67-10-12B UNLESS OTHERWISE SPECIFIED.

NOTES:

FOR ELECTRICAL TORQUE SPECIFICATIONS SEE DWG NO. 128783-01-000

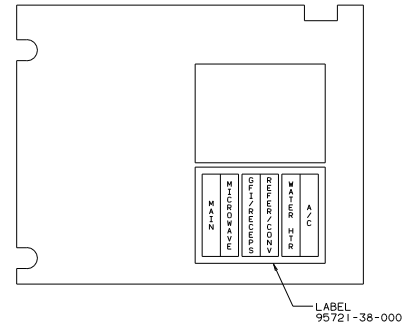
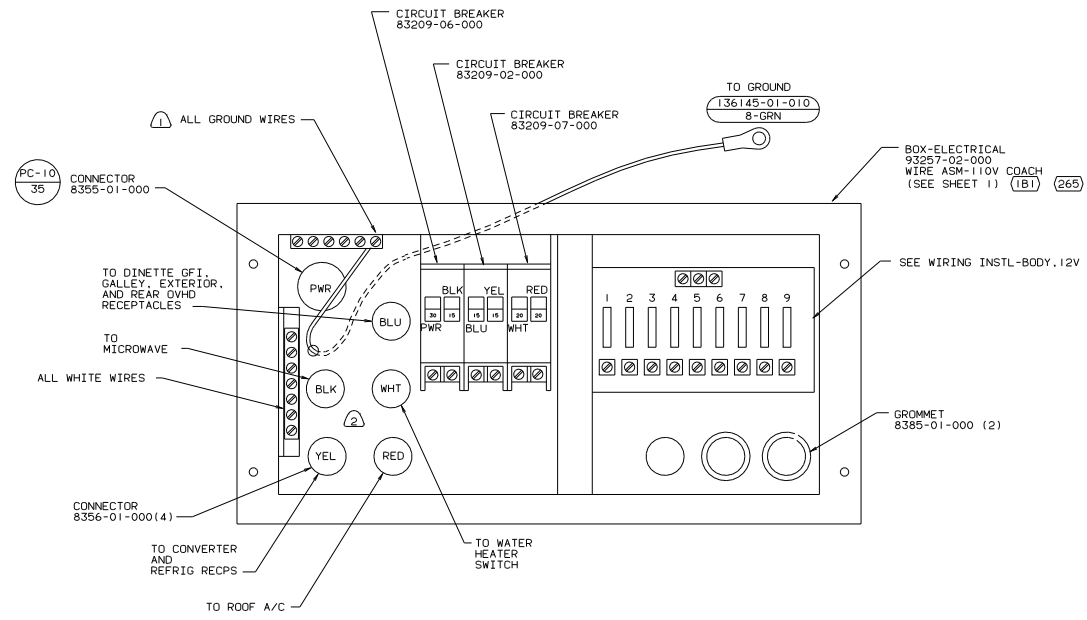
FOR ELECTRICAL CALLOUTS SEE DWG NO. 121339-01-000



- (04L) JAPAN EXPORT PACKAGE
- (39A) EXT RECEPTACLE DPLX 120VAC
- (12D) ELECTRICAL SYSTEM 30 AMP
- (265) CODES/STANDARDS-CSA/CMVSS
- (1B1) CODES STANDARDS/USA

(1B1) (265) (12D) 02 2220D

WIRING INSTL-BODY.110V(R30)  
SHEET 3 OF 5



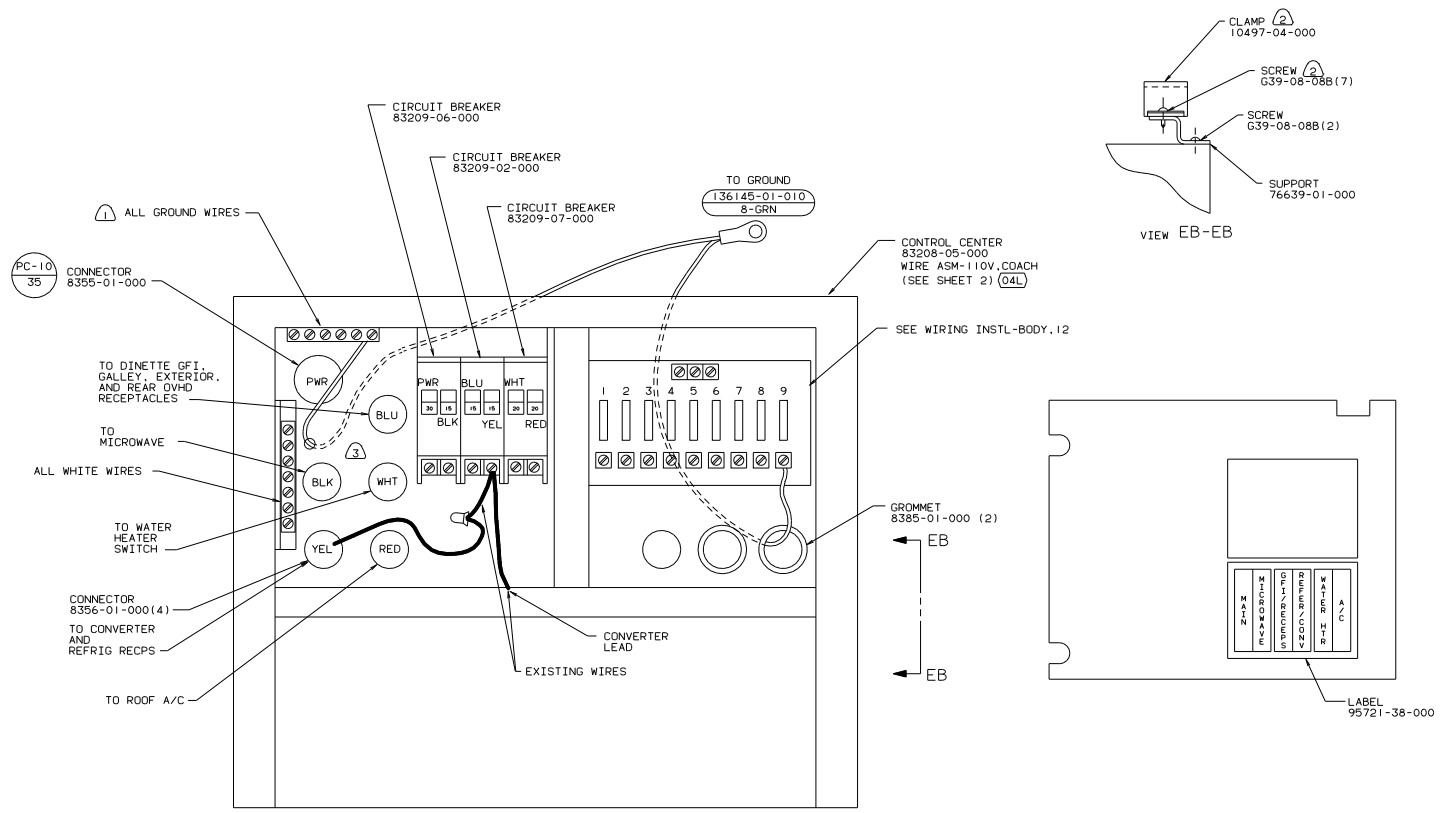
2 110V CABLES IN LOAD CENTER SHALL BE 200 LONG.  
 1 ALL GROUND WIRES TO BE COVERED WITH TUBING 8041-02-000.

FOR ELECTRICAL TORQUE SPECIFICATIONS SEE DWG NO. 128783-01-000

(X-X) FOR ELECTRICAL CALLOUTS SEE DWG NO. 121339-01-000

(12D) ELECTRICAL SYSTEM 30 AMP  
 (265) CODES/STANDARDS-CSA/CMVSS  
 (1B1) CODES STANDARDS/USA  
 (1B1) (12D) (265) 02 2220D

TITLE: WIRING INSTL-BODY.110V(LC30)  
 SHEET 4 OF 5



- ③ 110V CABLES IN LOAD CENTER SHALL BE 200 LONG.
- ② FASTEN ALL WIRES TO SUPPORT. USE ONE SCREW PER CLAMP.
- ① ALL GROUND WIRES TO BE COVERED WITH TUBING 8041-02-000.

FOR ELECTRICAL TORQUE SPECIFICATIONS SEE DWG NO. 128783-01-000	X-X	FOR ELECTRICAL CALLOUTS SEE DWG NO. 121339-01-000
--	-----	--

①20 ELECTRICAL SYSTEM 30 AMP  
 ①4L JAPAN EXPORT PACKAGE

①4L ①20 02 2220D

THRU:	WIRING INSTL-BODY (LC30JPN)
DO NOT SCALE DIMENSIONS	THIS DRAWING
SHEET 5 OF 5	IF NO