

- NOTES:
- SLOPE OF HORIZONTAL PIPING TO BE 6 PER 305 MIN.
 - SLOPE OF TRAP ARM MUST BE 6 PER 305.
 - ALL PIPE AND FITTINGS TO BE ASSEMBLED WITH SOLVENT 4020-01-000.
 - ALL EXTERIOR OPENINGS AROUND PIPE TO BE SEALED WITH 69637-01-000.
 - EXPOSED PIPE ABOVE ROOF TO BE PAINTED 37163-01-000.
 - FOR CAN UNITS EACH HOLDING TANK SHALL HAVE A CSA APPROVAL STAMPED NEAR THE IAMPO APPROVAL.

- PLACE GASKET BETWEEN FLOOR AND BOTTOM OF TANK.
- VENT PIPE MUST PROJECT 51 MIN AND 63.5 MAX ABOVE ROOF FOR PROPER FIT AND FUNCTION.
- SEE DWG 61607-01-000 FOR INSTALLATION OF GROMMET.
- SECURE PIPES TO CABINET USING WIRE TIE 108046-02-000 AND SCREW G67-10-12U (8).

- (265) CODES/STANDARDS-CSA/CMVSS
- (1B1) CODES STANDARDS/USA
- (1A7) SHOWER PACKAGE-WITHOUT
- (140) SHOWER PACKAGE

FOR DRAINAGE CALLOUTS SEE DWG NO. 116229-01-000

COPYRIGHT 2002 WINNEBAGO INDUSTRIES, INC. **WINNEBAGO** 03 222HD

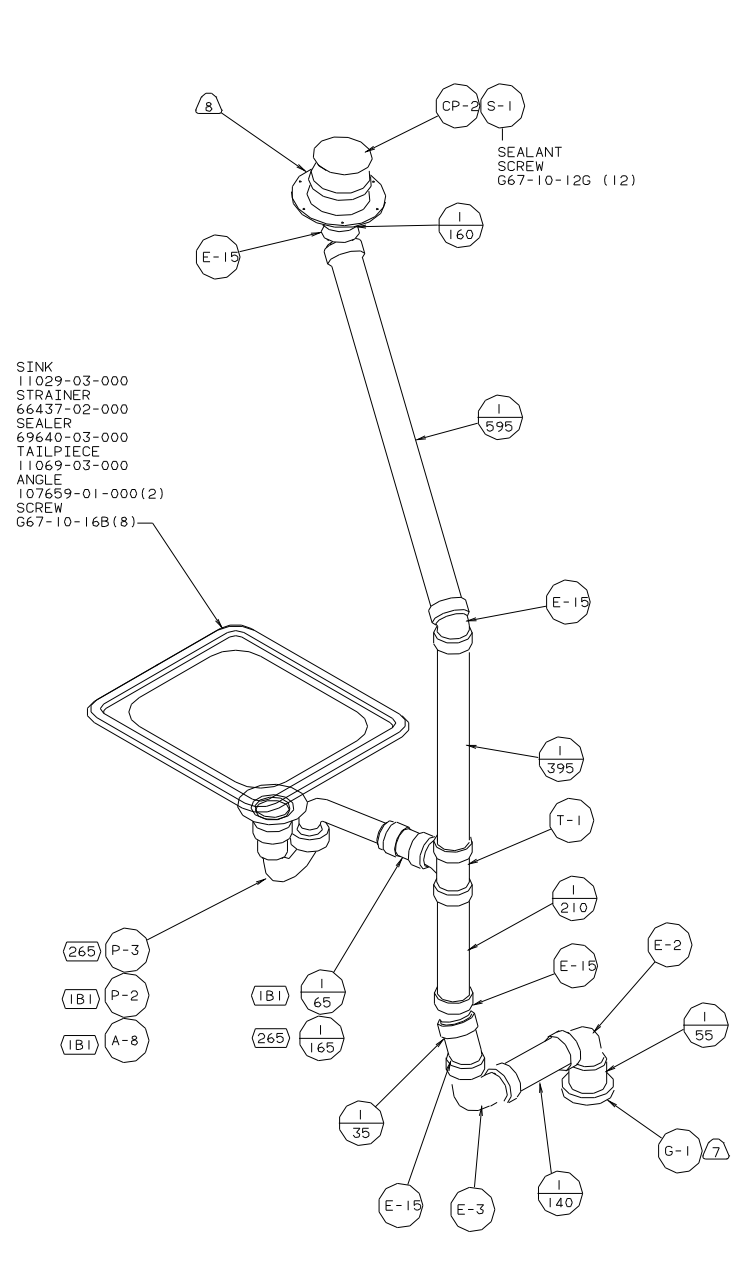
DATE	DATE	UNSPECIFIED TOLERANCES ARE:	MATERIAL:
		ANGLE DIM (XX) ± .3	
		ONE-PLACE (X,XX) ± .1	
		TWO-PLACE (X.XX) ± .1	
		THIRD ANGLE PROJECTION	

LAYOUT NO. 222HD TITLE: DRAINAGE SYSTEM INSTL

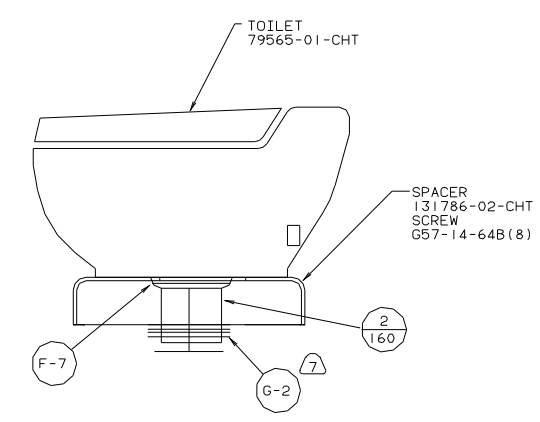
DIA # SCALE: NONE DO NOT SCALE DRAWINGS SIZE DWG NO. 141597

ALL DIMENSIONS ARE IN MILLIMETERS SHEET 1 OF 3

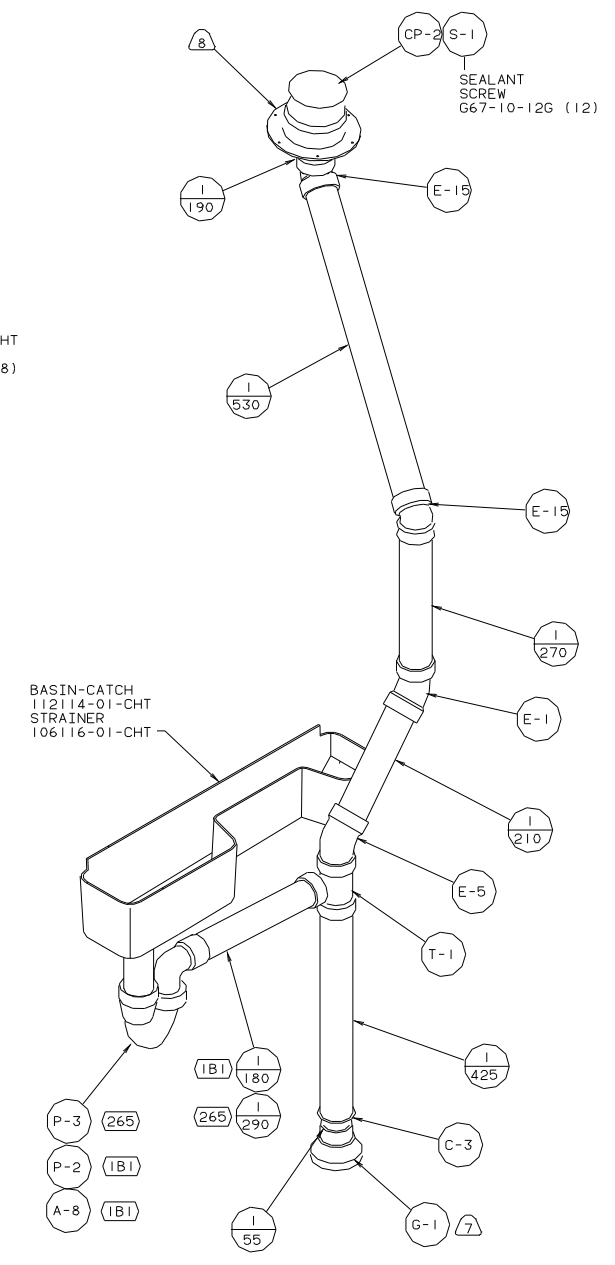
REF: 135954 C | 07/09/02



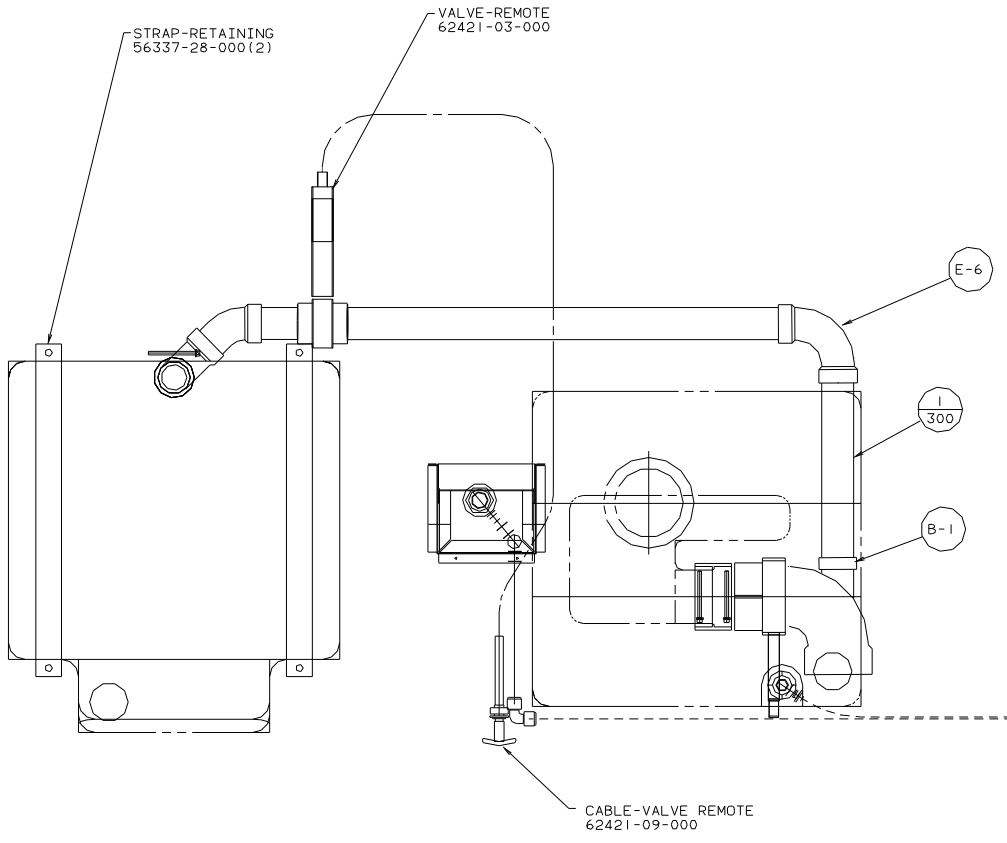
DETAIL A



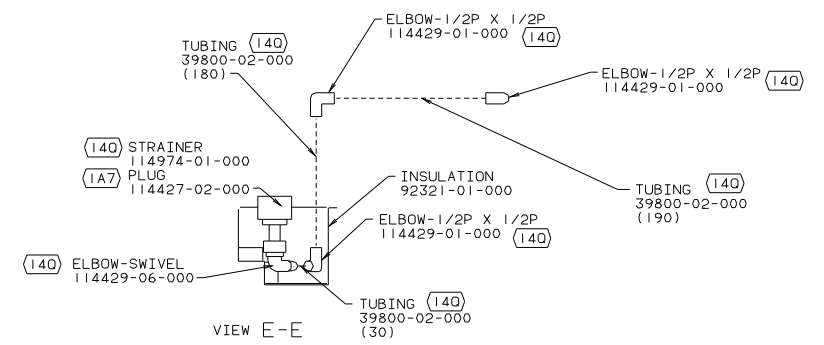
DETAIL B



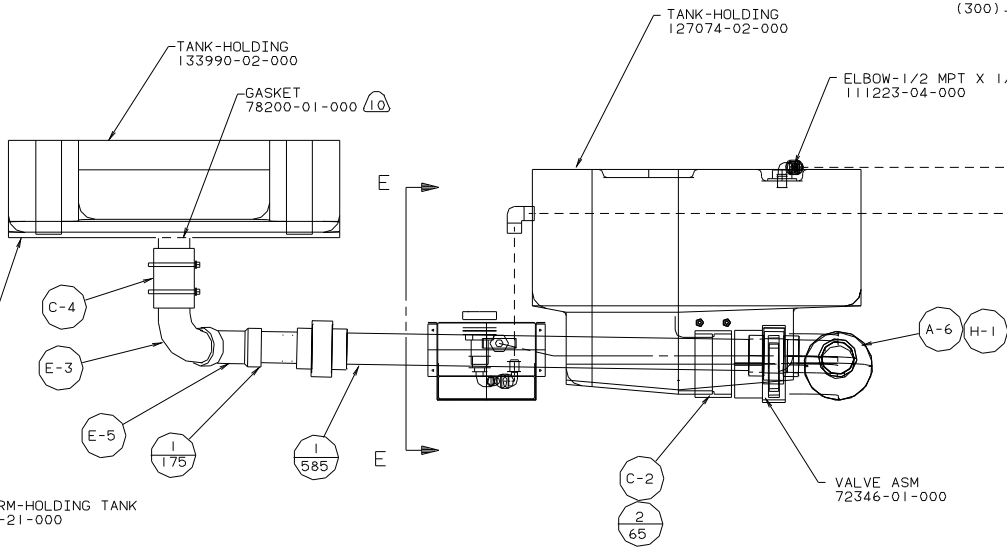
DETAIL C



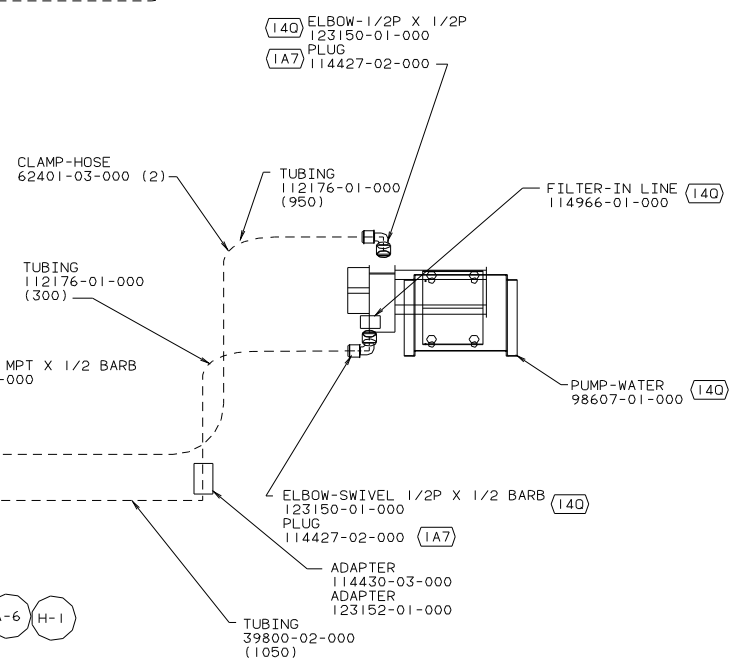
VIEW D-D

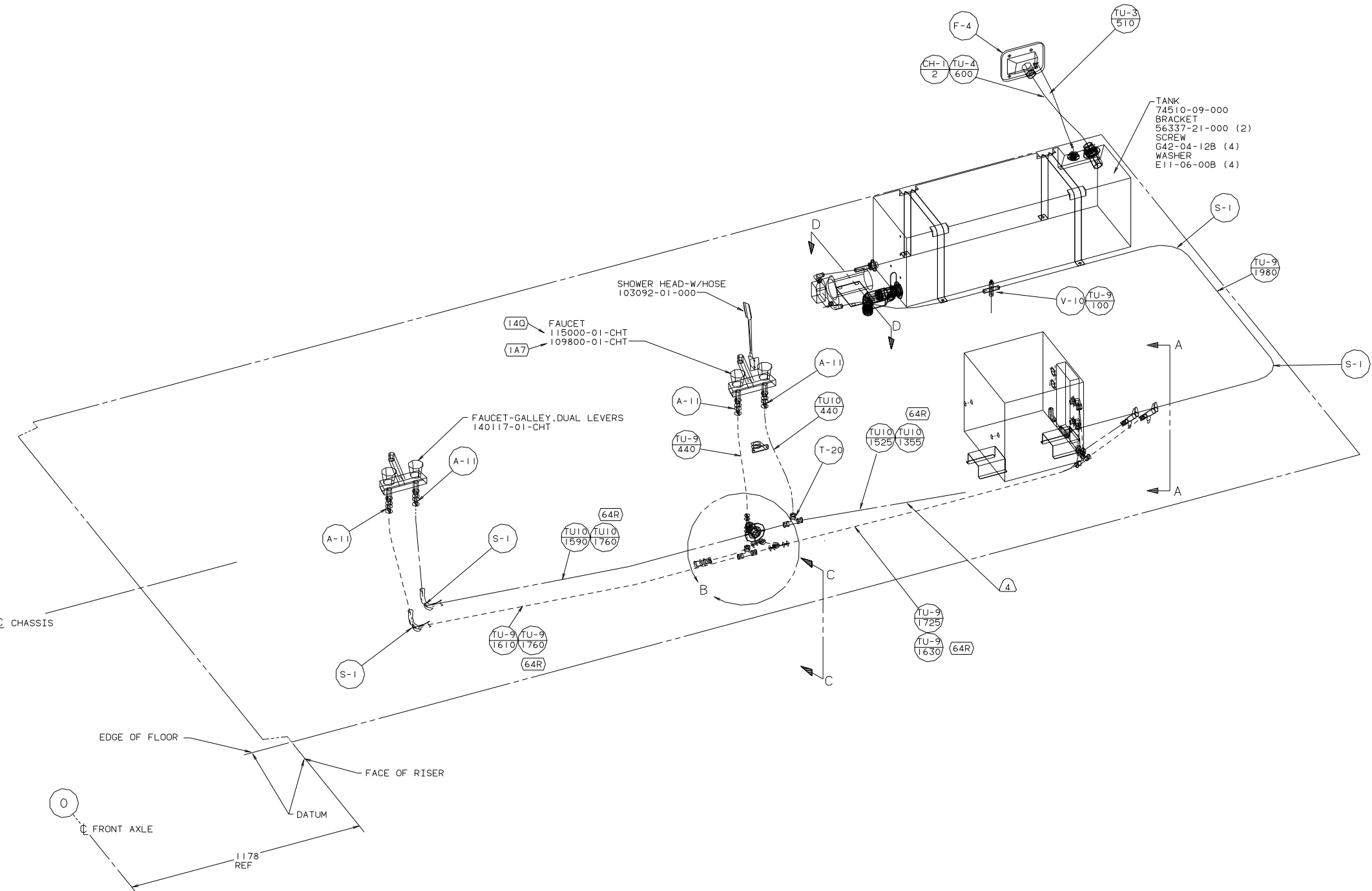


VIEW E-E



VIEW F-F





- TANK 74510-09-000
- BRACKET 56337-21-000 (2)
- SCREW G42-04-12B (4)
- WASHER E11-06-00B (4)

- (140) FAUCET 115000-01-CHT
- (1A7) FAUCET 109800-01-CHT

FAUCET-GALLEY, DUAL LEVERS
140117-01-CHT

SHOWER HEAD-W/HOSE
103092-01-000

A
A

B

C
C

CHASSIS

EDGE OF FLOOR

FACE OF RISER

DATUM

FRONT AXLE

1178
REF

- (64R) EXTERIOR WASH STATION
- (140) SHOWER PACKAGE
- (1A7) SHOWER PACKAGE-WITHOUT

- NOTES:
- WRAP WATER LINES WITH INSULATION 105290-01-000 ANY PLACE THEY ARE IN CONTACT WITH MOTOR AID LINES. FASTEN WITH WIRE TIES.
 - ALL TUBING TO BE SECURED AT 1200 INTERVALS MAXIMUM WITH CLAMP 10495-01-000 OR CLIP 91951-01-000 AND SCREW G67-10-12B.
 - TUBING TO BE INSTALLED WITH SUFFICIENT SLOPE TO PROVIDE DRAINAGE TO NEAREST VALVE.
 - PLASTIC FITTINGS TO BE SEALED WITH SEALANT 84456-01-000

X-X FOR WATER CALLOUTS SEE DWG NO. 116230-01-000

LEGEND	
HOT	— — — — —
COLD	- - - - -

COPYRIGHT 2002 WINNEBAGO INDUSTRIES, INC. **WINNEBAGO** 03 222HD

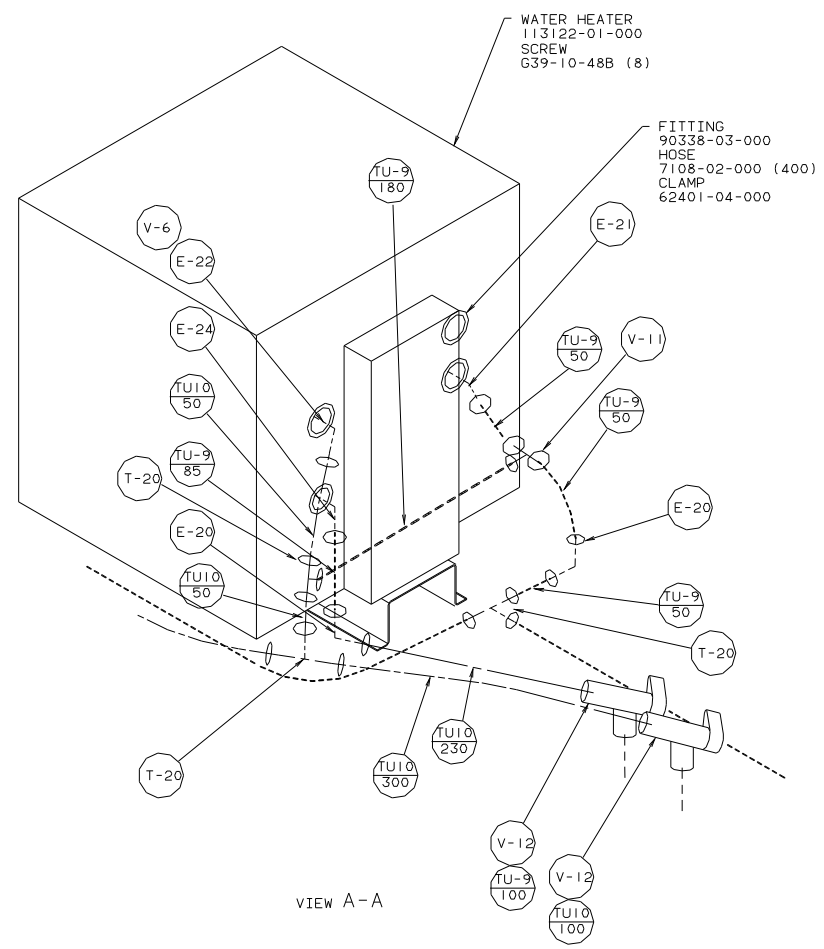
DFTR	DATE	UNSPECIFIED TOLERANCES ARE:	MATERIAL:
CHR	DATE	ANGLE DIM (X) ± 7	
P E	DATE	ONE-PLACE (X, XX) ±	
M E	DATE	TWO-PLACE (X, XX) ±	
	DATE	ANGLE ±	
	DATE	THIRD ANGLE PROJECTION	

LAYOUT NO: 0C222HD TITLE: WATER SYSTEM INSTL

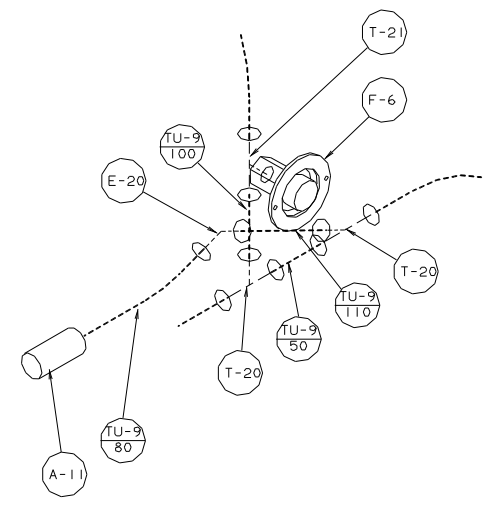
DIA # SCALE: NONE DO NOT SCALE DRAWINGS SHEET NO: 141141

ALL DIMENSIONS ARE IN MILLIMETERS SHEET 1 OF 2

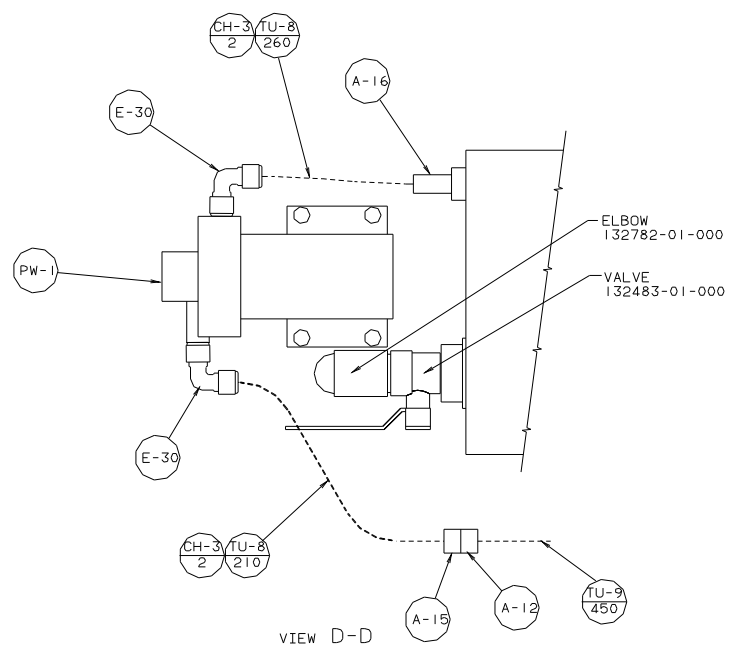
REF: 133332 J | 07/09/02



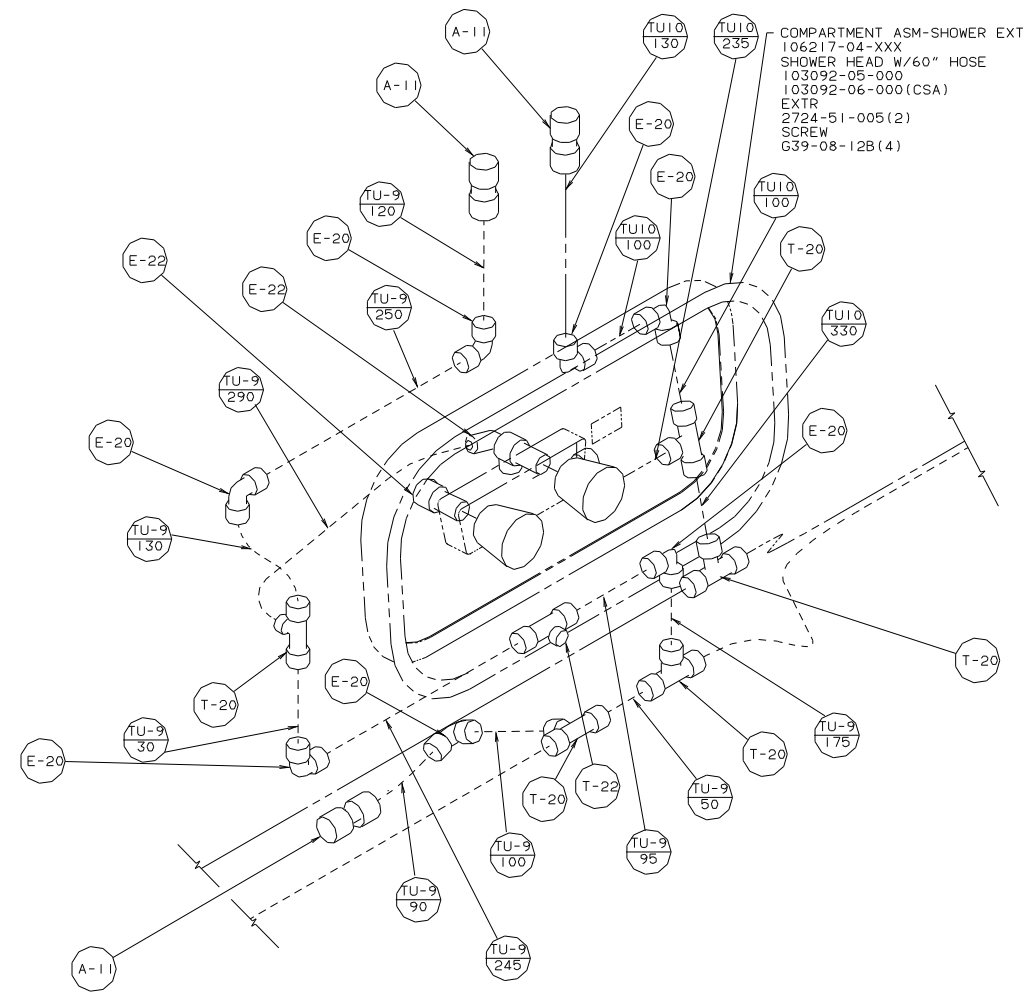
VIEW A-A



DETAIL B



VIEW D-D



VIEW C-C (64R)

TITLE: WATER SYSTEM INSTL	
DO NOT SCALE DRAWING	SIZE I.e
SHEET 2 of 2	DWG NO 141141
07/09/02	