



3-T's RV Products, Inc.

INSTALLATION INSTRUCTIONS FOR THE T-9W-2 SYSTEM AIR

Fits the Winnebago H-body

PARTS LIST:	1	Left and right assembly with 5" 7100 air sleeve
	2	Top square plates 2-3/8 X 3" X 3/16"
	4	5/16" X 3-1/2" bolts
	4	5/16" Lock nuts
	2	Air pressure decals; Owners leaflet
	4	3/8 Lock nuts

READ ALL INSTRUCTIONS BEFORE BEGINNING THIS INSTALLATION. CALL FACTORY BEFORE INSTALLING IF THERE IS NO AIR IN ASSEMBLIES.

1. Disconnect the vehicle's battery. Lift the vehicle using a jack, place jack stands under the frame, allow the axle to go to a full hang. Remove the rear wheels. Divide the assemblies, bolts and brackets into two groups, one for each side. Note that there are left and right air sleeve assemblies and they are marked as such.
2. Locate the oval hole in the frame section, which runs vertically at a 45 degree angle across the back of the wheel well area in front of the wheel. (See Figure 2.) The top bracket of the assembly fits against this frame area, with the boltholes facing the oval hole and the 1/2" lip on the bottom of the top bracket going in the oval hole. (See figure 2.) Place the air sleeve assembly over the spring, with the bottom bracket straddling the spring and the hook over the front U-bolt. (See Figure 1.) Take the 2-3/8" X 3" X 3/16" plate and place it behind the frame, creating a sandwich of top bracket, frame, and square plate (see Figure 2). Using the 3/8"x 1-1/4" bolts and nuts, that are welded to the top bracket by the factory. Torque bolts to 30 foot-pounds.
3. Repeat all of these steps on the opposite side of the vehicle, then jack the axle up so the load of the vehicle is on the springs. Place the stands under the axle.
4. Fill each air sleeve with about 50 pounds of air. This will allow the brackets to fit snugly between the frame and the spring, and then lower to 20 psi. Line up the air sleeve so that it is vertically aligned. Make sure that the adjustment bolts on the bottom bracket are loose. Using a hammer, tap the lower bracket until the air sleeve is parallel to the top bracket (straight). **THE ALLOWABLE TOLERANCE IS +/-1/8." THIS ALIGNMENT IS CRITICAL TO THE PROPER UP AND DOWN MOVEMENT OF THE AIR SLEEVE. TO EMPHASIZE, PROPER ALIGNMENT MEANS THAT THE RUBBER ON THE AIR SLEEVE IS STRAIGHT UP AND DOWN, PERPENDICULAR TO THE TOP AND**

1055 EMPIRE DRIVE LAKE HAVASU CITY, AZ 86404
(928) 453-3040 USA: (800) 223-1779 FAX (928) 453-3140
www.3tsrv.com

BOTTOM BRACKETS. With this 20 pounds of air in the sleeves and a load on the axle, you should be able to push on the sides of the air sleeve about three inches up from the bottom and NOT feel the bottom piston at any point against the sleeve. When properly aligned, secure the 5/16" bolts on the adjustable slider portion of the bottom bracket by tightening to 20 foot pounds and tighten the top bolt to 40 INCH POUNDS. (See Figure 2.)

5. Using the 5/16" x 3-1/2" bolts, bolt through the two holes in the U-shaped bracket, under the bottom of the spring, place bolts through to the center of the vehicle. Tighten until metal bends.

6. Place the airline along the side of the frame attaching it where possible with tie-wraps. Be careful to keep the airlines away from sharp edges. Keep airlines at least 4" away from tail and exhaust pipes or any area likely to melt plastic lines. Drill a 5/16" hole through the body structure for mounting the air fills. Refer to Figure 3 for assembly of the air fill. Install decal next to the air fill.

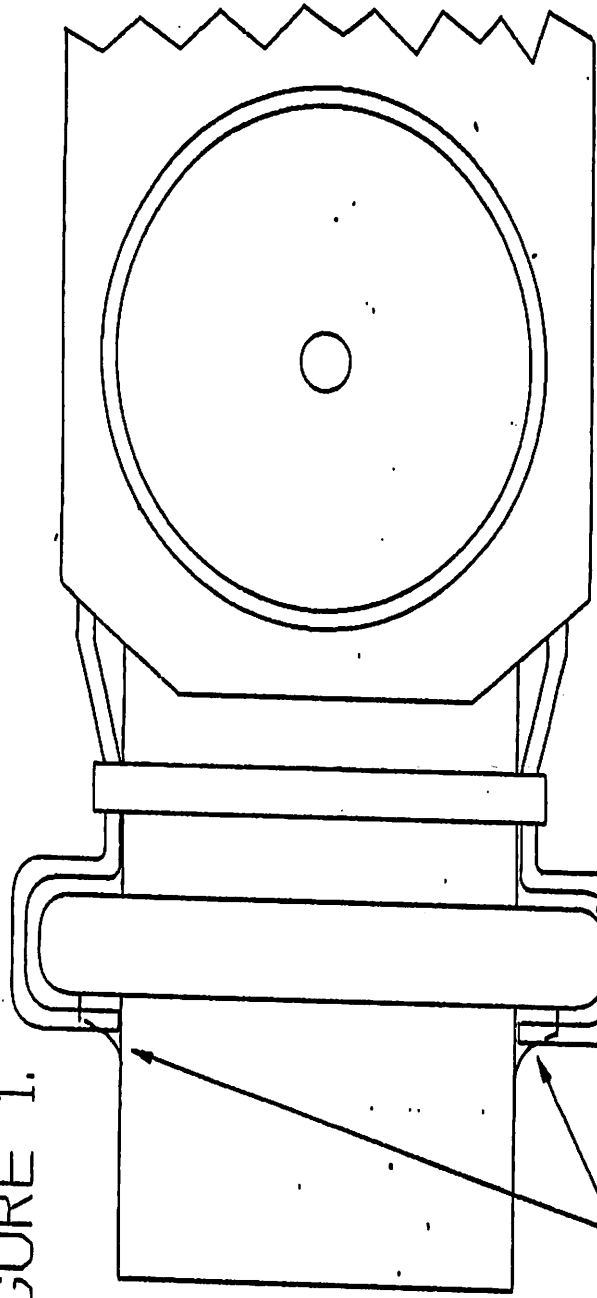
7. Inflate the air sleeves to 100 psi. If the unit fails to inflate, the airline has probably become crimped somewhere in routing. Check all fittings for air leaks with a soapy water solution. Release the air pressure until the vehicle sits level. Units can carry from 20 to 100 psi; most often we recommend 20 to 30 pounds, but individual owners may require different pressures to suit their own concept of best ride. Remember to never raise the rear end higher than the front. Units must contain air at all times. Driving the vehicle without air in the System Air will void the warranty. Reinstall wheels; reconnect battery, and road test vehicle.

3-T's EXCLUSIVE WARRANTY

All of 3-T's products are designed and tested to provide a maximum of trouble-free performance and to enhance the ride, comfort and safety of your vehicle. Our products are guaranteed to your satisfaction, both parts and labor, for 30 days when installed by a 3-T's dealer, and for 12 months against defective parts. Warranty void if brackets are welded to the frame. Reg. U.S. Patent No. 4,494,772 et al.

**1055 EMPIRE DRIVE LAKE HAVASU CITY, AZ 86404
(928) 453-3040 USA: (800) 223-1779 FAX (928) 453-3140
www.3tsrv.com**

FIGURE 1.



FRONT U-BOLT

PUSH STEEL
PLATE DOWN
BEHIND U-BOLT

REV.	DATE	SCALE	DATE	DRAWING NUMBER	W-2 INS L
		1/1	2/94		

1855 EMPIRE DR.
LAKE HAVASU AZ
88483

FT

DRAWN PMS

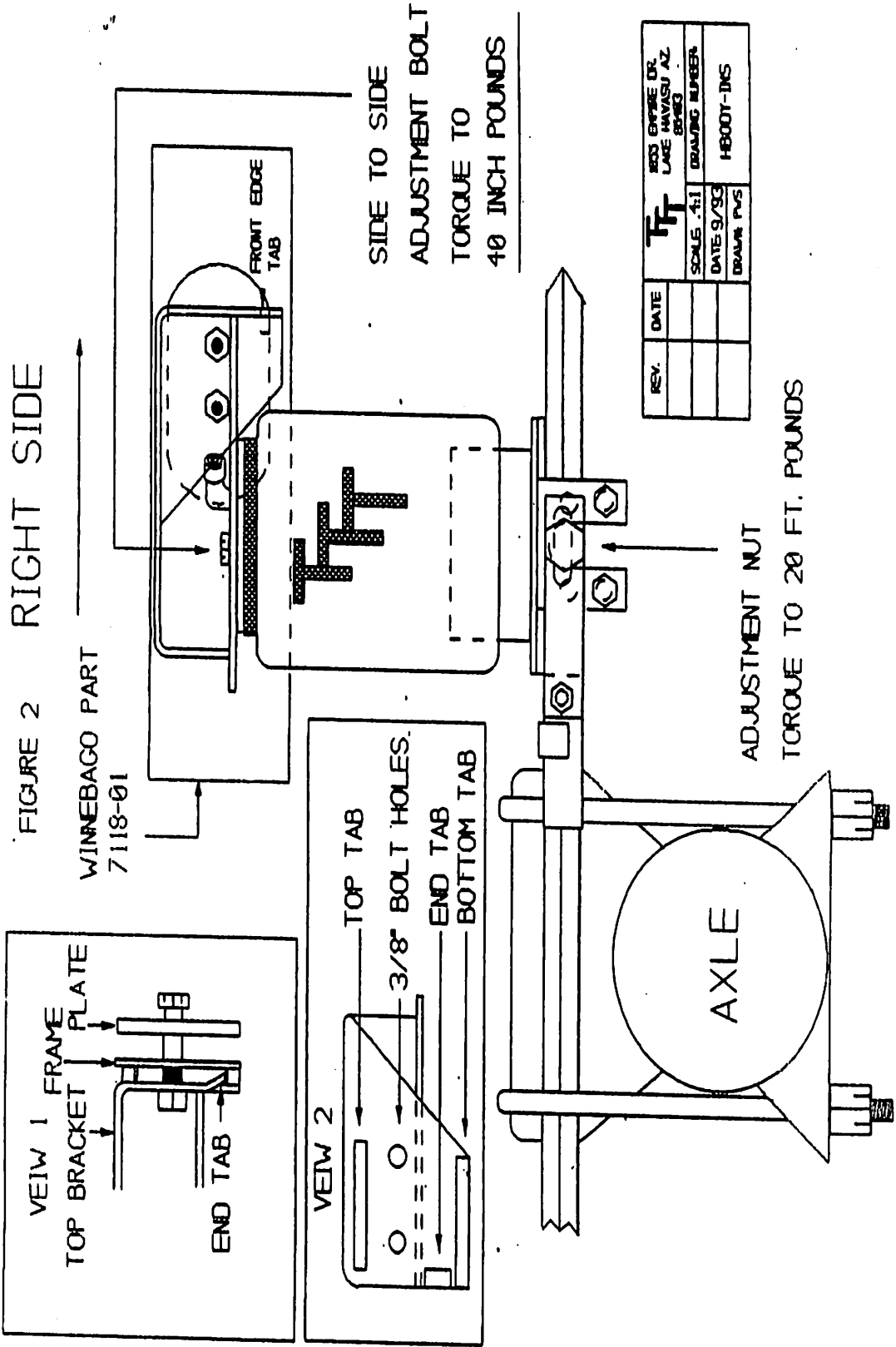


FIGURE 2 RIGHT SIDE

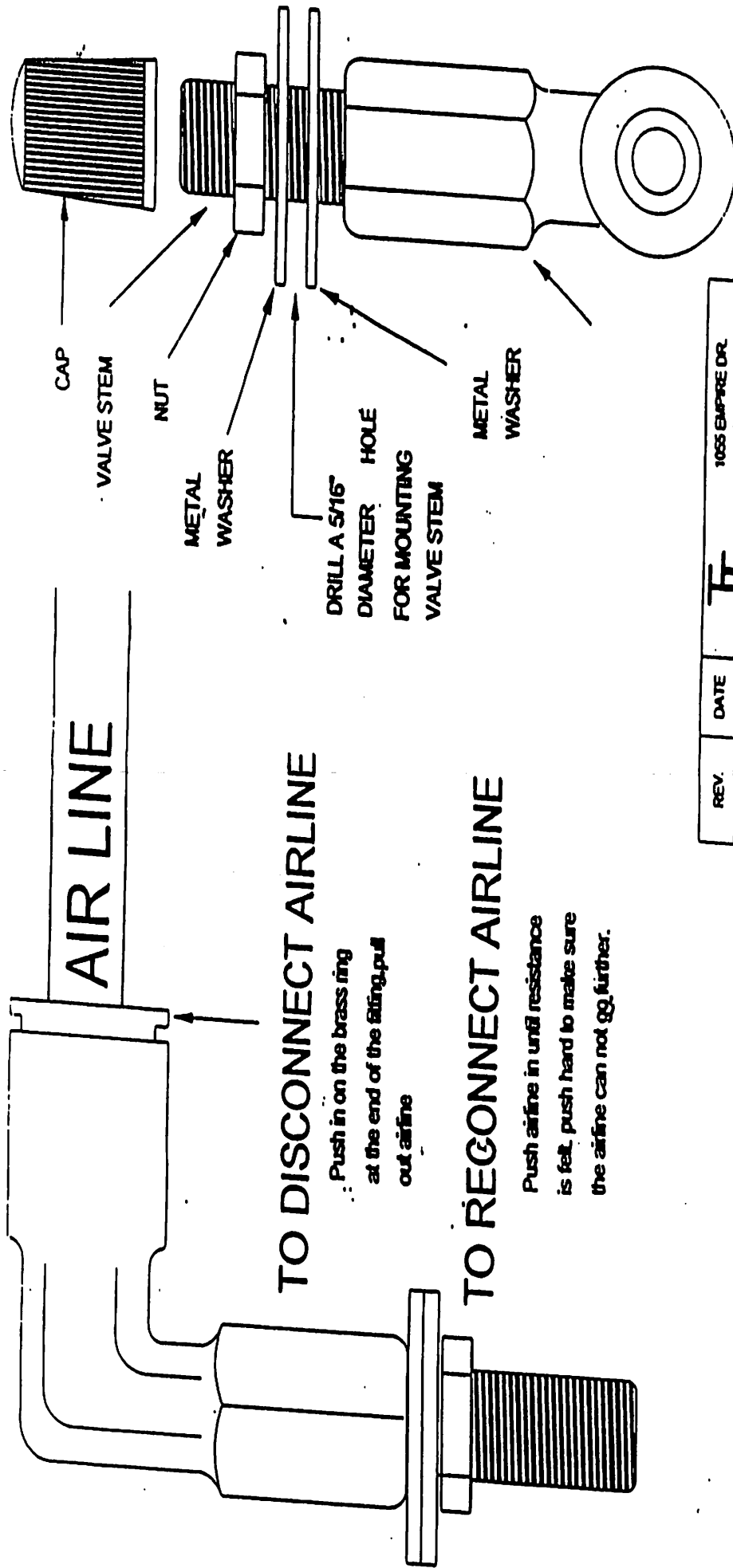
WINEBAGO PART
7118-01

SIDE TO SIDE
ADJUSTMENT BOLT
TORQUE TO
40 INCH POUNDS

ADJUSTMENT NUT
TORQUE TO 20 FT. POUNDS

REV.	DATE	FF BOB EMPIRE DR. LARE NAVIGU AL SERIES	SCALE 1:1 DATE 9/93 DRAWN PVS	HB007-INS

FIGURE 3



REV.	DATE	TFF	1055 EMPIRE DR. LAKE HAVASU AZ 86403
			DRAWING NUMBER
		SCALE 1:1	AIR FILL
		DATE 2/93	DRAWN PWS

STRAIGHT FITTINGS ARE ON SOME KITS